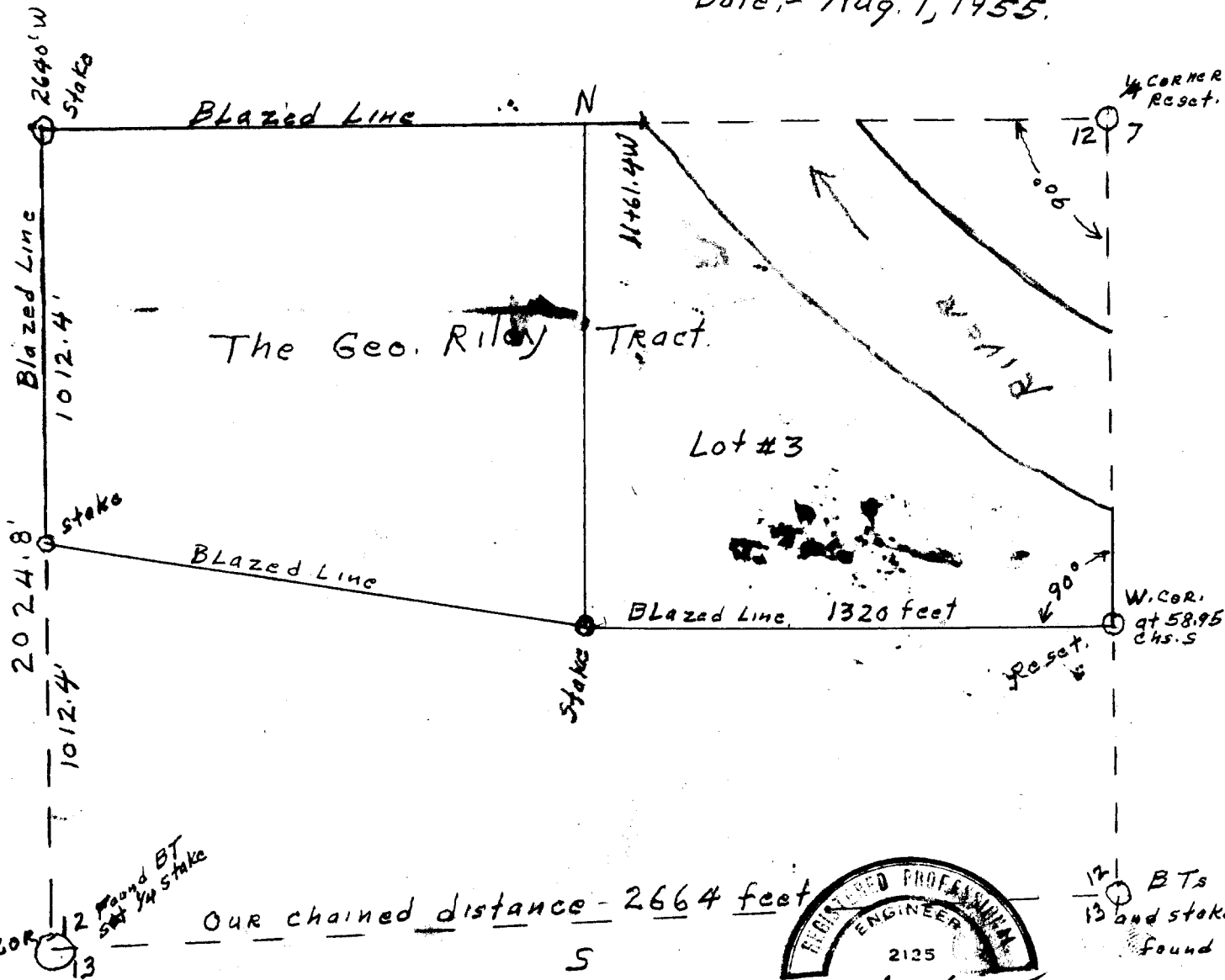
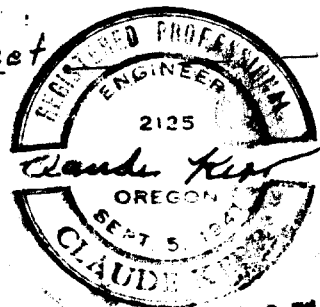


SKETCH SHOWING THE SURVEY
 Of the Geo. Riley Tract in Sec. 12, T25S, R8W.
 Scale, - 1" = 400'
 Date, - Aug. 1, 1955.



COUNTY SURVEYORS FILE DATA
 DO NOT REMOVE FROM OFFICE



C. S. File No. 42/11A

CLAUDE KERR

Real Estate

TIMBER CRUISING
AND
LOGGING ENGINEERING

Timber and Timberlands
ROSEBURG, OREGON
~~MELROSE ROUTE, BOX 884M~~
~~PHONE 75-46~~

REGISTERED
PROFESSIONAL
ENGINEER

Phone: ORCHARD 2-1722

2430 Foothill Drive

July 30, 1955

Survey of the George Riley Tract

described as Lot #3 and Northwest 1/4 of Southeast 1/4,
Section 12, Township 25 South, Range ~~7~~ West
8

I recently reset the 1/4 corners for Sections 12 and 7 and the witness corner at 58.95 chains South on the line between Sections 7 and 12, both on the township line between Township 25 South, Range 7 West, and Township 25 South, Range 8 West.

Both these corners were reported November 15, 1954.

I sat on the 1/4 corner for Sections 7 and 12, shot on the witness corner at 58.95 chains South, turned off 90°00" or to the West and chained 2640 feet for the Northwest corner of the Riley tract. At this point I set a 3"x3"x5' fir post.

I next went to the witness corner at 58.95 chains South and the end of the original survey. The South boundary of the timber claim was projected west from this point.

I sat on this witness corner, sighted on the 1/4 corner and turn off 90°00" to the West; chained 1320 feet west and set 4"x4"x4' fir post, marked as the Southwest corner of Lot 3.

We next chained West from the corner for Sections 12 and 13 and found an original bearing tree with the scribing visible.

We set a stake for the 1/4 corner from this original BT - now a 35" D. Fir bearing North 3° West for 16 Links.

We next chained North on a random line from the 1/4 stake and at 2024.8 feet North we intersected the North boundary of the George Riley tract at 54.6' east of the Northwest corner. We set a stake 27.3' east of the halfway point or 1012.4' North of the 1/4 corner for the Southwest corner of the Riley tract. We then blazed the east boundary on the corrected line.

Next a random line was run between the Southwest corner of the Riley tract and the Southwest stake for Lot #3. Corrected the variation and blazed the correct line between the corners completing the closing side.

All boundaries of the George Riley tract are now plainly blazed.

Yours truly,

Claude Kerr
Claude Kerr

C. S. File No. 42/11 b