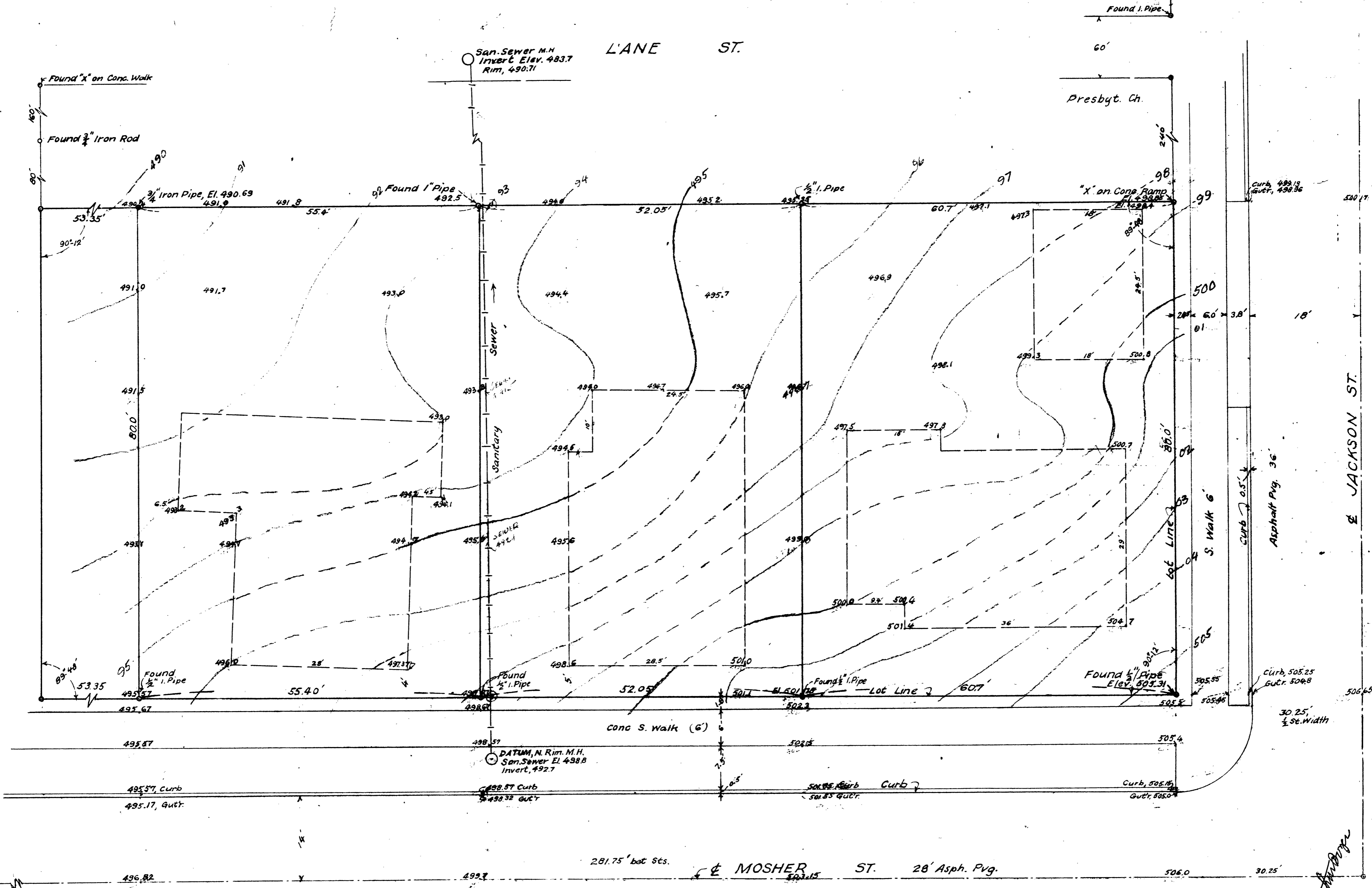


E ROSE ST. N. 28° E.

L'ANE ST.

E JACKSON ST.



FILED
 RECEIVED
 JUN 10 1955
 COUNTY SURVEYOR
 DOUGLAS COUNTY, ORE.

LOT 1 & E. 57.4 Ft. of LOT 8,
 BLOCK 58, ROSEBURG, ORE.
 MAY, 1955 AB. 1" = 10'

COUNTY SURVEYORS FILE DATA
 DO NOT REMOVE FROM OFFICE

779 ROW 19 FOR DRS. MONROE + HUTSON A.B. J.M. P. C.S. File No. 41/393