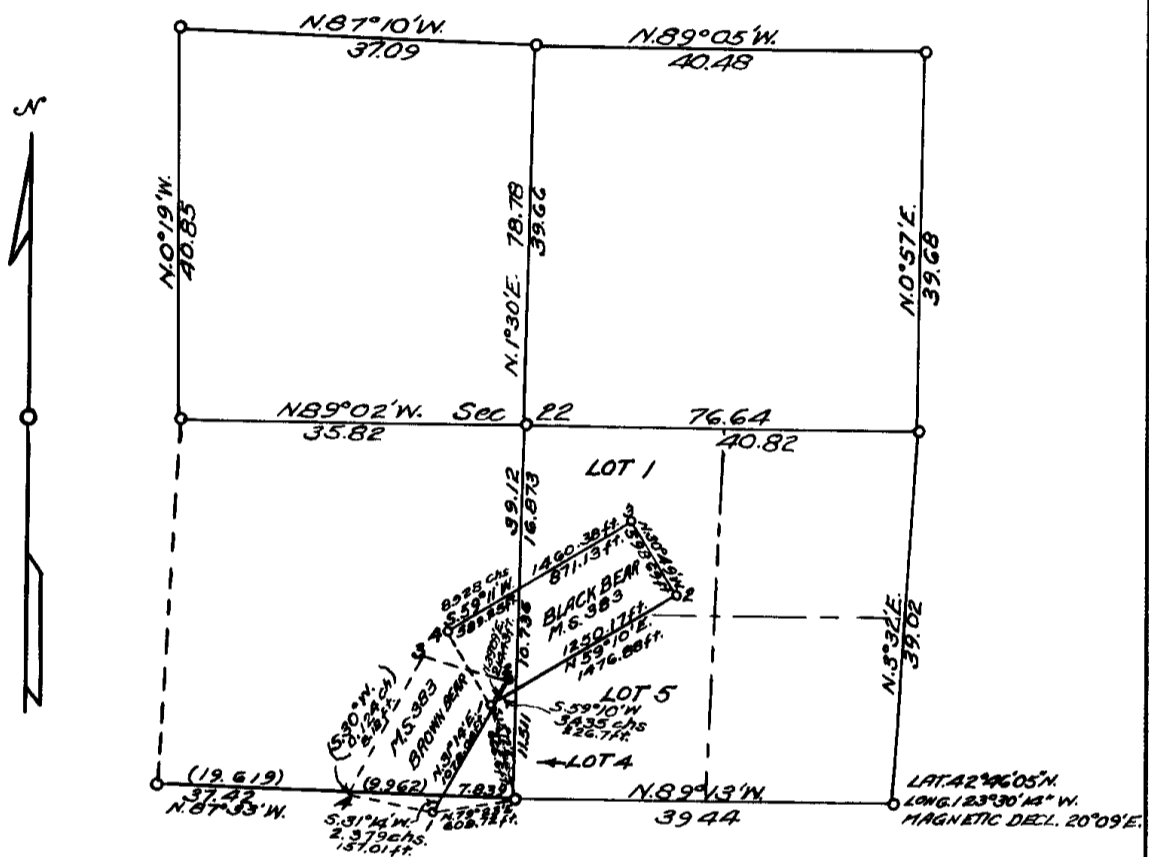


**COUNTY SURVEYORS FILE DATA  
DO NOT REMOVE FROM OFFICE**

T.32S., R.7W., WILLAMETTE MER., ORE

DEPENDENT RESURVEY  
WITH SUBDIVISION OF SECTION  
AND RETRACEMENT OF PART OF  
MINERAL SURVEY NO. 383



Scale: 1 in. = 20 chs. = 1320 ft. The bearings of all lines are referred to the true Mean Magnetic Declination 20°42'E. meridian determined by solar observations

O = Corner Occupied & Monumented ( ) Tie Calculated from Subsisting Survey.  
 ——— Line Surveyed — — — — Line Not Retraced, & TIE LINES.

Survey executed Sept. 16, 1954 to Apr. 27, 1955  
for DOLLAR & PATTERSON COMPANY, INC., OF  
GLENDALE, OREGON.

I hereby certify that the survey represented by this plat is  
executed in conformity with the Laws of the State of Oregon.

REGISTERED  
OREGON  
LAND SURVEYOR

*Norman D. Price*

JULY 7 1944  
NORMAN D. PRICE  
10 33

FILED  
RECEIVED

MAY 4 1955

COUNTY SURVEYOR  
WILLAMETTE COUNTY, ORE.

FIELD NOTES  
OF THE  
DEPENDENT RESURVEY OF PART OF THE LINES BOUNDING SECTION 22,  
SURVEY OF PART OF THE SUBDIVISION OF SECTION 22,  
AND  
RETRACEMENT OF PART OF MINERAL SURVEY NO. 383, IN SECTION 22,  
OF  
TOWNSHIP 32 SOUTH, RANGE 7 WEST OF THE WILLAMETTE MER., OREGON

EXECUTED AT THE REQUEST OF DOLLAR AND PATTERSON CO., INC.  
OF GLENDALE, OREGON

BY

Norman D. Price, Registered Professional Land Surveyor.

Survey commenced September 16, 1954.

Survey completed April 27, 1955.

## TOWNSHIP 32 SOUTH, RANGE 7 WEST, WILLAMETTE MER., OREGON

## Dependent Resurvey of Part of the Subdivision.

## Chains

The locus of the cor. of secs. 22, 23, 26, and 27, T. 32 S., R. 7 W., Willamette Mer., Oregon, is determined at the record bearing from original NE. bearing tree, and record bearings and distances from the original SE., SW., and NW. bearing trees.

At the corner point,

Set an iron pipe, 3 ft. long, 2 ins. diam., 28 ins. in the ground, mkd. RS33; from which the original bearing trees:

A Douglas fir, 54 ins. diam., bears N.33°E., 68 lks. dist., mkd. on bark T32S R7W S23 BT.

A Douglas fir, 26 ins. diam., bears S.40°E., 22 lks. dist., mkd. on bark T32S R7W S26 BT.

A Douglas fir stump, 30 ins. diam., bears N.40°W., 14 lks. dist., on which no marks remain.

A sugar pine, 48 ins. diam., bears S.35°W., 30 lks. dist., with blazes healed.

The geographic position of this corner is lat. 42°46'05"N., and longitude 123°30'14"W. The observed magnetic declination is 20°09'E.

Sept. 16, 1954: at this sec. cor. at 9 a.m., app.t., or 9h08m53s a.m. by my watch which reads correct 120th meridian time, I set off 42°46'N., on the lat. arc, 2°41'N., on the decl. arc of my Gurley solar compass and determine a meridian with the solar attachment which is in perfect adjustment. Further solar observations were taken at each station along each line.

Thence

N. 3° 32' E., on true line bet. secs. 22 and 23.

39.02 Point for  $\frac{1}{4}$  sec. cor. of secs. 22 and 23 determined at the record bearing and distance from both original bearing trees.

At the corner point,

Set an iron pipe, 3 ft. long, 1 $\frac{1}{2}$  ins. diam., 28 ins. in the ground, mkd. RS33; from which the original bearing trees:

A Douglas fir, 28 ins. diam., bears East, 50 lks. dist., mkd. on bark  $\frac{1}{4}$  S BT.

An incense cedar, 36 ins. diam., bears S.55°W., 16 lks. dist., mkd. on bark  $\frac{1}{4}$  S BT.

Thence

N. 0° 57' E., beginning new measurement.

39.68 Point for cor. of secs. 14, 15, 22, and 23, determined at the record bearing and distance from each original bearing tree.

At the corner point,

Set an iron pipe, 3 ft. long, 2 ins. diam., 28 ins. in the ground, mkd. RS33; from which the original bearing trees:

A madrona, 16 ins. diam., bears N.65°E., 59 lks. dist. with partial scribe marks on decayed old blaze.

A madrona, 16 ins. diam., bears S.60°E., 16 lks. dist.

T. 32 S., R. 7 W.

Chains

with partial scribe marks on decayed old blaze.

A madrona, 12 ins. diam., bears S.40°W., 8 lks. dist., with old blaze decayed.

A madrona, 11 ins. diam., bears N.43°W., 25 lks. dist., with old blaze decayed.

And new bearing trees:

A madrona, 12 ins. diam., bears S.85°E., 46 lks. dist., mkd. T32S R7W S23 RS33 BT.

A yellow pine, 12 ins. diam., bears S.14°W., 27 lks. dist., mkd. T32S R7W S22 RS33 BT.

A Douglas fir, 10 ins. diam., bears N.67°W., 29 lks. dist., mkd. T32S R7W S15 RS33 BT.

From the cor. of secs. 22, 23, 26, and 27

N. 89° 13' W., on true line bet. secs. 22 and 27.

39.44 Point for  $\frac{1}{2}$  sec. cor. of secs. 22 and 27, determined at the record distance from each original bearing tree.

At the corner point,

Set an iron pipe, 3 ft. long,  $1\frac{1}{2}$  ins. diam., 2 ins. in the ground to bedrock, and in a mound of stone to top, mkd. RS33; from which the original bearing trees:

A madrona, 20 ins. diam., bears N.18°E., 82 lks. dist., with old blaze burnt.

A Douglas fir, 34 ins. diam., bears S.75°E., 45 lks. dist., with the scribe marks  $\frac{1}{2}$  on charred bark blaze.

And new bearing trees:

An incense cedar, 8 ins. diam., bears N.86°E., 66 lks. dist., mkd.  $\frac{1}{2}$  S22 RS33 BT.An incense cedar, 36 ins. diam., bears South, 54 lks. dist., mkd.  $\frac{1}{2}$  S27 RS33 BT.

Thence

N. 87° 33' W., beginning new measurement.

7.839 Intersect line 1-2 Brown Bear Lode, M.S.388 at a point from which Cor. No.1 bears S.31°14'W., 2.379 chs. (157.01 ft.) dist.

17.801 Intersect line 3-4 Brown Bear Lode, M.S.388 at a point from which Cor. No.4 bears S.30°W., 0.124 chs. (8.18 ft.) dist. by calculation from subsisting survey.

37.42 Point for cor. of secs. 21, 22, 27, and 28, determined at record bearing and distance from original NE., SW., and NW. bearing trees:

At the corner point,

Set an iron pipe, 3 ft. long, 2 ins. diam., 28 ins. in the ground, mkd. RS33; from which the original bearing trees:

A Douglas fir, 32 ins. diam., bears N.25°E., 34 lks. dist., mkd. on bark T32S R7W S22 BT.

A Douglas fir, 30 ins. diam., bears S.62°W., 30 lks. dist., mkd. on bark T32S R7W S28 BT.

T. 32 S., R. 7 W.

Chains

A madrona, 12 ins. diam., bears N.50°W., 43 lks. dist., with blaze healed.

There is no remaining evidence of the original SE. bearing tree.

The locus of  $\frac{1}{4}$  sec. cor. of secs. 21 and 22 is determined at the record bearing and distance from the only extant original bearing tree.

At the corner point,

Set an iron pipe, 3 ft. long,  $1\frac{1}{2}$  ins. diam., 28 ins. in the ground, mkd. R333 from which the extant original bearing tree:

A Douglas fir, 30 ins. diam., bears N.55°E., 31 lks. dist., mkd. on bark  $\frac{1}{4}$  S BT.

And a new bearing tree:

A Douglas fir, 9 ins. diam., bears N.77 $\frac{1}{2}$ °W., 84 lks. dist., mkd.  $\frac{1}{4}$  S21 R333 BT.

Thence

N. 0° 19' W., on true line bet. secs. 21 and 22.

40.85 Point for cor. of secs. 15, 16, 21, and 22 determined at the record bearing and distance from each original bearing tree.

At the corner point,

Set an iron pipe, 3 ft. long, 2 ins. diam., 28 ins. in the ground, mkd. R333; from which the original bearing trees:

A yellow pine, 10 ins. diam., bears N.28°E., 21 lks. dist., with the scribe marks W S15 uncovered.

A yellow pine, 16 ins. diam., bears S.20°E., 32 lks. dist., with partial scribe marks visible.

A yellow pine, 40 ins. diam., bears S.75°W., 135 lks. dist., with blaze healed.

A sugar pine, 28 ins. diam., bears N.25°W., 36 lks. dist., with blaze healed.

From the cor. of secs. 14, 15, 22, and 23

N. 89° 05' W., on true line bet. secs. 15 and 22.

40.48 Point for  $\frac{1}{4}$  sec. cor. of secs. 15 and 22 determined at the record bearing and distance from each original bearing tree.

At the corner point,

Set an iron pipe, 3 ft. long,  $1\frac{1}{2}$  ins. diam., 28 ins. in the ground, mkd. R333; from which the original bearing trees:

A Douglas fir, 50 ins. diam., bears N.75°W., 56 lks. dist., mkd. on bark  $\frac{1}{4}$  S BT.

A Douglas fir, 16 ins. diam., bears S.65°E., 9 lks. dist., with blaze healed.

Thence

N. 87° 10' W., beginning new measurement.

T. 32 S., R. 7 W.

Chains

37.09 The cor. of secs. 15, 16, 21, and 22.

---

 SURVEY OF PART OF THE SUBDIVISION OF SECTION 22.
 

---

From the  $\frac{1}{4}$  sec. cor. of secs. 22 and 27

N. 1° 30' E., on N. and S. center line of sec. 22.

11.511 Intersect line 1-2 Black Bear Lode, M. S. No. 383, at a point from which Cor. No. 1 bears S. 59° 10' W., 3.435 chs. (226.7 ft.) dist.

22.247 Intersect line 3-4 Black Bear Lode, M. S. No. 383, at a point from which Cor. No. 4 bears S. 59° 11' W., 8.928 chs. (589.25 ft.) dist.

39.12 Point for center  $\frac{1}{4}$  sec. cor. of sec. 22 at intersection with the E. and W. center line.Set an iron pipe, 3 ft. long,  $1\frac{1}{2}$  ins. diam., 28 ins. in the ground, mkd. RS33; from whichA fir, 20 ins. diam., bears N. 46° E., 44 lks. dist., mkd. C  $\frac{1}{2}$  S22 RS33 BT.A fir, 20 ins. diam., bears S. 66° W., 148 lks. dist., mkd. C  $\frac{1}{2}$  S22 RS33 BT.78.78 The  $\frac{1}{4}$  sec. cor. of secs. 15 and 22.From the  $\frac{1}{4}$  sec. cor. of secs. 22 and 23

N. 89° 02' W., on E. and W. center line of sec. 22.

40.82 Point for center  $\frac{1}{4}$  sec. cor. of sec. 22 at intersection with the N. and S. center line.76.64 The  $\frac{1}{4}$  sec. cor. of secs. 21 and 22.

---

 RETRACEMENT OF PART OF MINERAL SURVEY NO. 383.
 

---

Feet

## BROWN BEAR LODGE

Cor. No. 1 of Brown Bear lode is monumented with the badly decayed remains of a wooden post on which no marks are found.

At the corner point,

Set an iron pipe, 3 ft. long,  $1\frac{1}{2}$  ins. diam., 28 ins. in the ground, mkd. RS33; from which the original bearing trees:

A yellow pine, 16 ins. diam., bears N. 27° E., 42 ft. dist., mkd. C 1 MS 383 BT.

A fir, 12 ins. diam., bears S. 55° W., 37 ft. dist., with blaze healed.

The  $\frac{1}{4}$  sec. cor. of secs. 22 and 27, T. 32 S., R. 7 W., bears N. 79° 23' E., 608.72 ft. dist.

Thence N. 31° 14' E.

1078.04 Cor. No. 2, monumented with the decayed remains of a wooden post set in a mound of stone.

At the corner point,

Set an iron pipe, 3 ft. long,  $1\frac{1}{2}$  ins. diam., 28 ins. in the

T. 32 S., R. 7 W.

Feet

ground, mkd. RS33; from which the original bearing tree:

A Douglas fir, 30 ins. diam., bears S.56°W., 20 ft. dist., mkd. on bark C 2 MS 383 BT.

## BLACK BEAR LODE

Cor. No.1 of Black Bear lode is monumented with the charred remains of a wooden post in a scattered mound of stone.

At the corner point,

Set an iron pipe, 3 ft. long,  $1\frac{1}{2}$  ins. diam., 28 ins. in the ground, mkd. RS33; from which the remains of the original bearing tree:

The stump hole of a pine bears N.47°E., 55 ft. dist.

And a new bearing tree:

A yellow pine, 14 ins. diam., bears S.59°W., 27 ft. dist., mkd. BB 1-383-RS33 BT.

The  $\frac{1}{4}$  sec. cor. of secs. 22 and 27, T. 32 S., R. 7 W., bears S. 15° 12' E., 666.6 ft. dist.

Cor. No.2 of Brown Bear lode bears N. 39° 09' E., 214.43 ft. dist.

Thence N. 59° 10' E.

1476.88 Point for Cor. No.2, determined at record bearing and distance from the original bearing tree.

At the corner point,

Set an iron pipe, 3 ft. long,  $1\frac{1}{2}$  ins. diam., 28 ins. in the ground, mkd. RS33; from which the original bearing tree:

A pine, 14 ins. diam., bears N.84°W., 27 ft. dist., with blaze healed.

Thence N. 30° 49' W.

598.69 Cor. No.3, monumented with the decayed remains of a wooden post in a mound of stone.

At the corner point,

Set an iron pipe, 3 ft. long,  $1\frac{1}{2}$  ins. diam., 28 ins. in the ground, mkd. RS33; from which the original bearing tree:

A madrona, 12 ins. diam., bears S.42 $\frac{1}{2}$ °E., 32 ft. dist., mkd. C 3 MS 383 BT.

Thence S. 59° 11' W.

1460.38 Cor. No.4, monumented with the decayed remains of a wooden post in a mound of stone.

At the corner point,

Set an iron pipe, 3 ft. long,  $1\frac{1}{2}$  ins. diam., 28 ins. in the ground, mkd. RS33; from which the original bearing tree:

A fir stub, 16 ins. diam., bears S.32°E., 50 ft. dist., mkd. on bark C 4 MS 383 BT.

And a new bearing tree:

A fir, 9 ins. diam., bears S.72°E., 32 ft. dist., mkd. BB 4-383-RS33 BT.

I hereby certify that the bearings of all lines recorded in this survey were determined by solar observations and that the survey described in the foregoing field notes was executed in conformity with the laws of the State of Oregon.

Grants Pass, Oregon.  
May 2, 1955.

*Norman D. Price*  
Norman D. Price,  
Registered Professional  
Land Surveyor for Oregon,  
No. 33.

REGISTERED  
OREGON  
LAND SURVEYOR

*Norman D. Price*

JULY 7 1944  
NORMAN D. PRICE  
No 33

# CUTTING LINES PERFECTED

A COMPLETE SURVEYING AND CRUISING SERVICE

NORMAN D. PRICE

BONDED MINERAL SURVEYOR  
REGISTERED PROFESSIONAL  
LAND SURVEYOR FOR OREGON

& California

ROUTE 2, BOX 486A  
PHONE 3884  
GRANTS PASS, OREGON

MARVIN C RAMSEY

TIMBER ESTIMATES  
ROAD LOCATION  
724 N E. MADRONE STREET  
PHONE 8647  
GRANTS PASS, OREGON

May 2, 1955

Mr. Ben B. Irving,  
County Surveyor,  
Douglas County,  
Roseburg, Oregon.

Dear Mr. Irving:

Herewith enclosed by registered mail, return receipt requested, please find the finished field returns of the dependent resurvey of part of the boundaries of sec. 22, survey of part of the subdivision of sec. 22, and retracement of part of Mineral Survey No. 368 in sec. 22, T. 32 S., R. 7 W., Willamette Mer., Oregon; also re-habilitation of the  $\frac{1}{4}$  sec. cor. of secs. 20 and 21, T. 31 S., R. 3 W., Willamette, Mer., Oregon, <sup>see</sup> 4/374 executed by me at the request of Dollar and Patterson Co., Inc., of Glendale, Oregon.

Kindly record these returns in accordance with the laws of the State of Oregon.

Very truly yours,

*Norman D. Price*

Norman D. Price,  
Registered Professional  
Land Surveyor for Oregon,  
No. 55.

cc to  
Dollar and Patterson Co., Inc.

FILED  
RECEIVED

MAY 4 1955

COUNTY SURVEYOR  
DOUGLAS COUNTY, ORE.

C. S. File No. 41/373