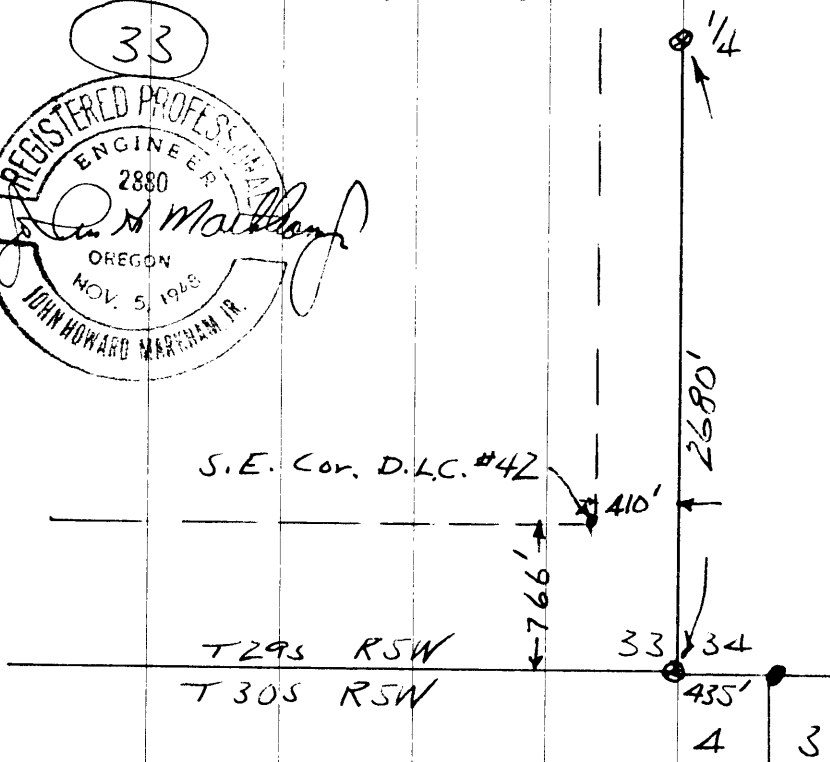
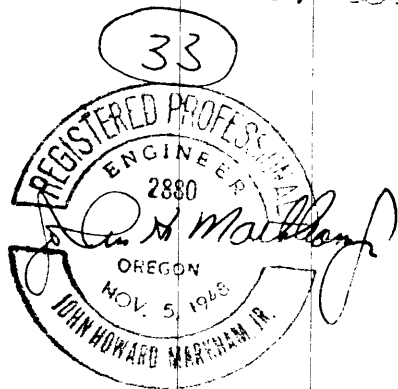


Mar. 15, 1955

S.E. $\frac{1}{4}$ Sec. 33, T29S, R5W, W.M.

I made the tie between the
Sec. Cor. & D.L.C. Cor. to show the
true position: field notes show
D.L.C. Cor. 500' or 700' west.



Work done for Stomar Lbr. Co.

C. S. File No. 41/368