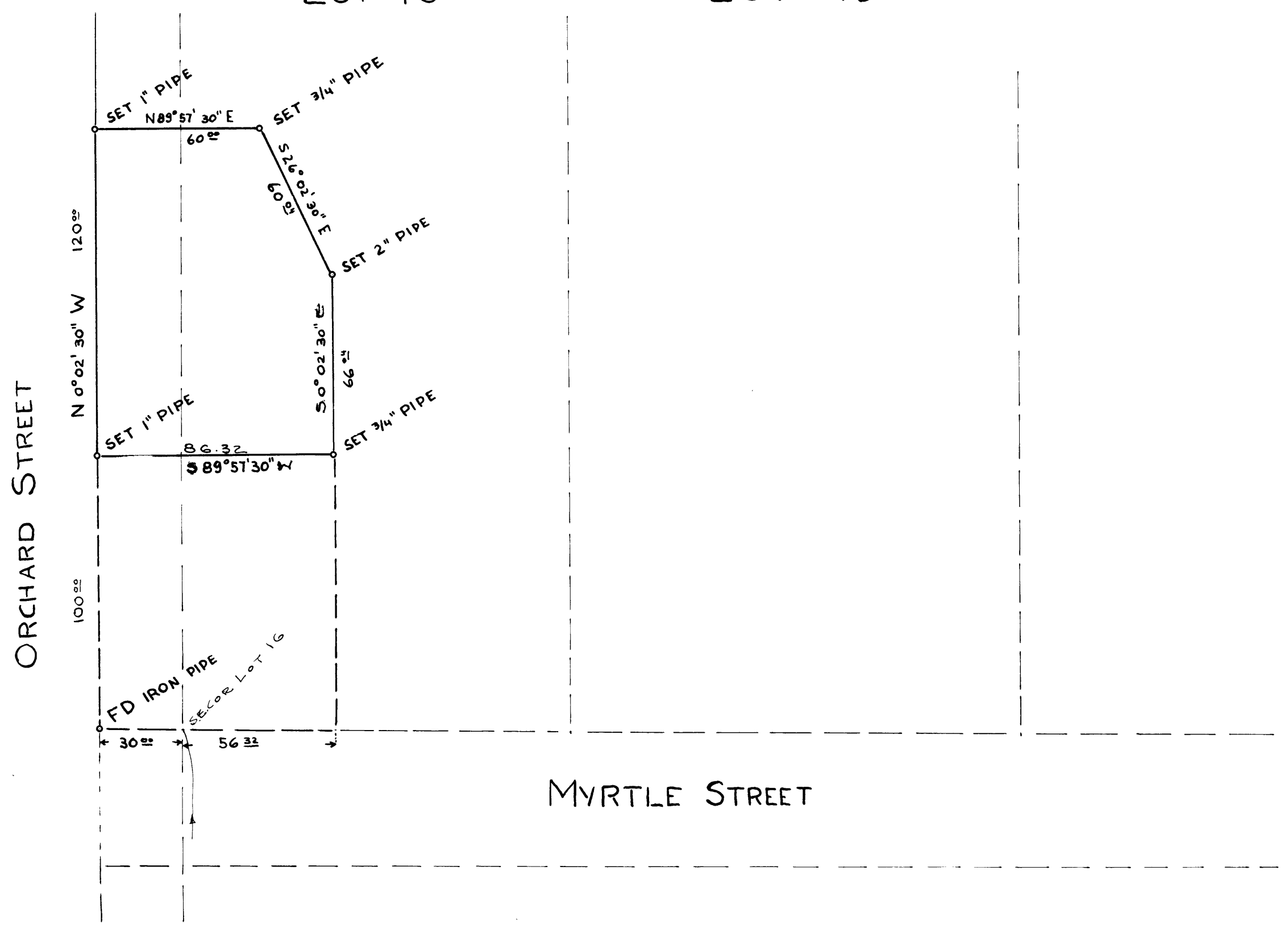


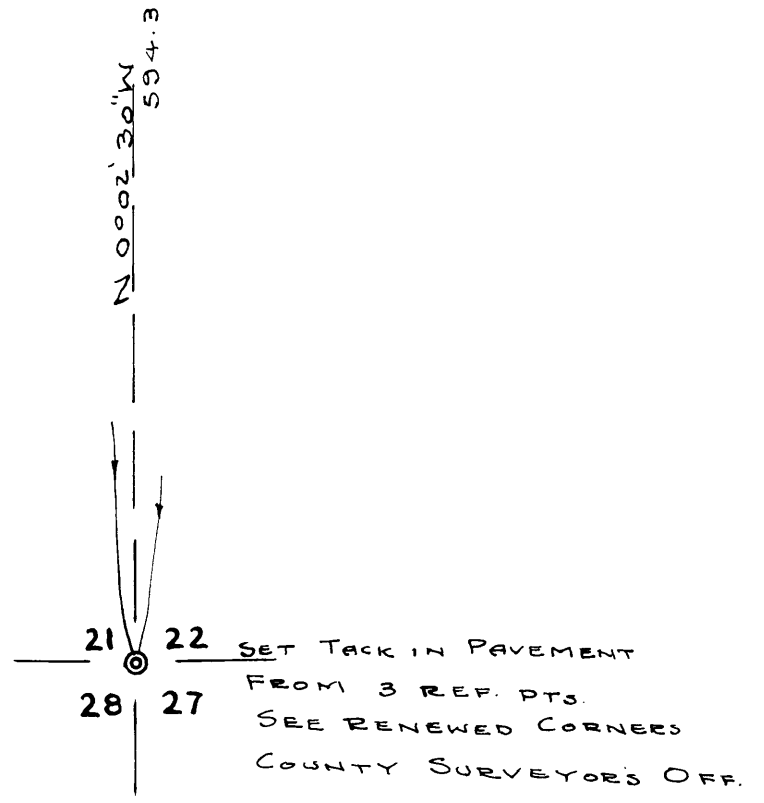
LOT 16

LOT 15



MAP OF SURVEY OF J.M. SHIRTCLIFF JR.
 IN LOT 16 OF GABBERT'S 2ND ADD'N
 TO THE TOWN OF MYRTLE CREEK, DOUGLAS
 COUNTY, OREGON

FILED
 RECEIVED
 MAR 29 1955
 COUNTY SURVEYOR
 DOUGLAS COUNTY, ORE.



21 22 SET TACK IN PAVEMENT
 FROM 3 REF. PTS.
 28 27 SEE RENEWED CORNERS
 COUNTY SURVEYORS OFF.

A. R. EVANS + ASSOCIATES
 ENGINEERING, LANDSURVEYING, TIMBER CRUISING
 JANUARY 27, 1955

ROSEBURG, ORE.
 SCALE 1" = 40'

COUNTY SURVEYORS FILE DATA
 DO NOT REMOVE FROM OFFICE



T 295, R 5W.

C. S. File No. 41/365