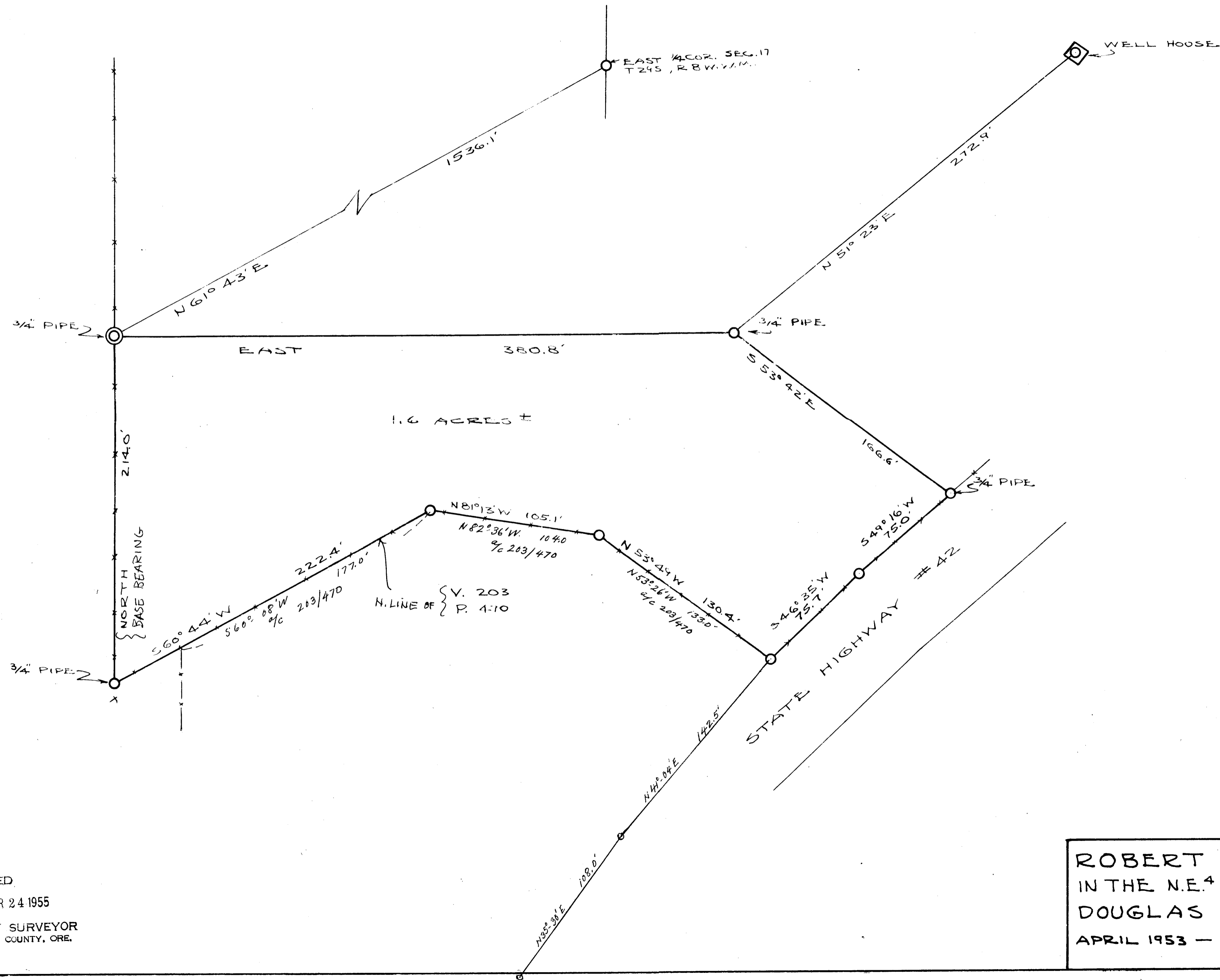


KIRKENDALL



COUNTY SURVEYORS FILE DATA
DO NOT REMOVE FROM OFFICE

FILED
RECEIVED
MAR 24 1955
COUNTY SURVEYOR
DOUGLAS COUNTY, ORE.

ROBERT P. WHEELER PROPERTY
IN THE N.E. 1/4 OF THE S.E. 1/4 S. 17, T. 29 S., R. 8 W. W. 1/4 M.
DOUGLAS COUNTY, OREGON
APRIL 1953 - ARTHUR BOYER ENGR. - SCALE 1" = 40'