

TOWNSHIP 28 SOUTH RANGE 6 WEST; W.M.

1/4 Section corner common to Sections ~~24~~²⁶ & 25

Original bearing trees destroyed in clearing right-of-way for highway.

Set new corner from highway centerline ties and coordinates.

Corner marked by a 3/4" round iron pin set inside the hollow of a 36 inch oak tree. Concrete cast around the pin to hold in place.

FILED
RECEIVED

MAR 15 1955

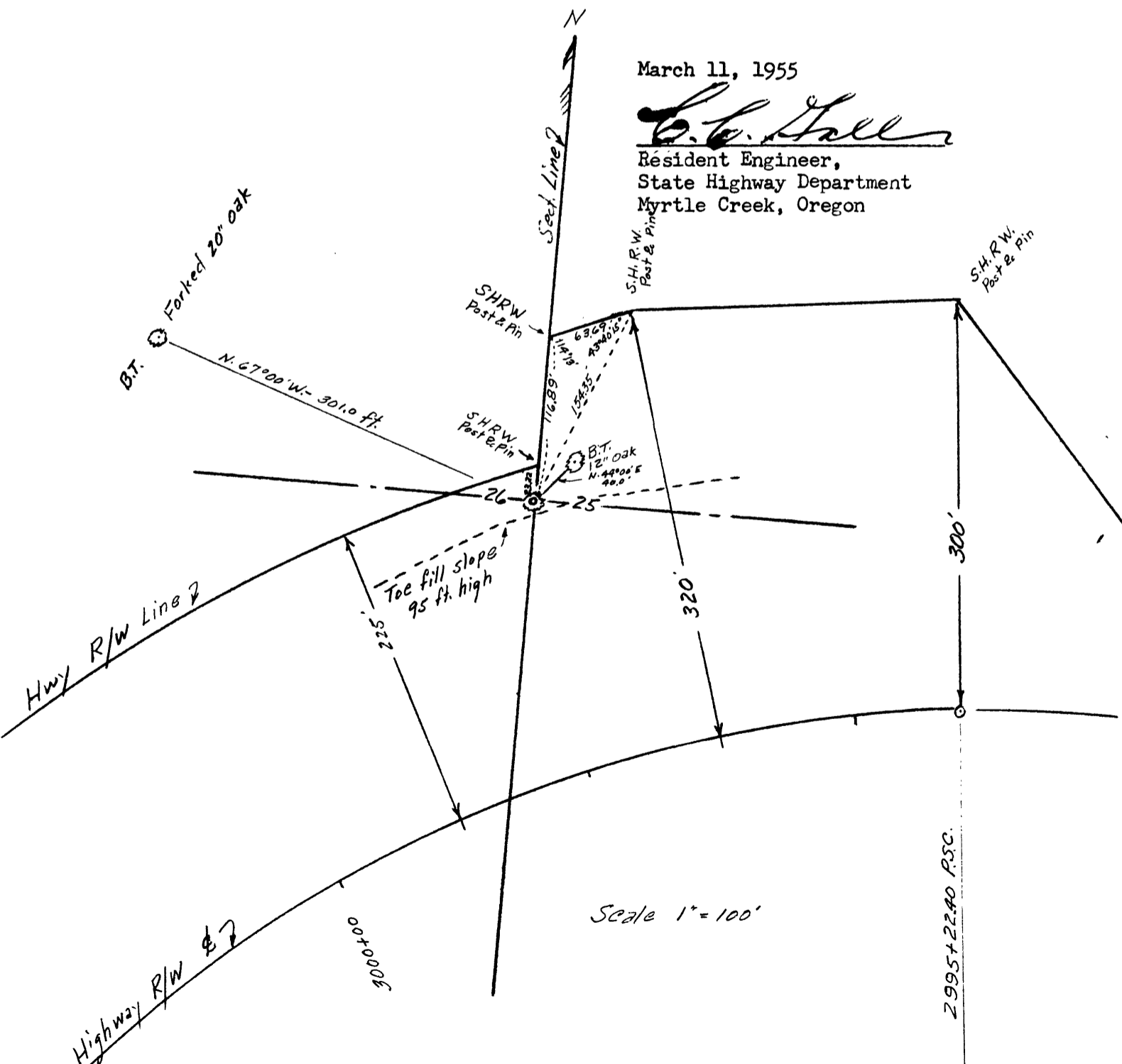
COUNTY SURVEYOR
DOUGLAS COUNTY, ORE.

Bearing trees marked:

A 12 inch oak tree N 44° 00' E - 40.0 ft.

A forked 20 inch oak tree N 67° 00' W - 301.0 ft.

(see sketch below for additional ties to corner)



March 11, 1955

C. C. Hall

Resident Engineer,
State Highway Department
Myrtle Creek, Oregon