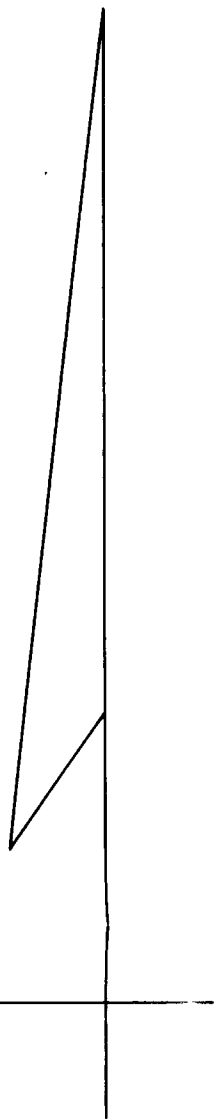
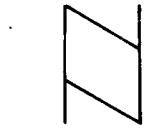


COUNTY SURVEYORS FILE DATA
DO NOT REMOVE FROM OFFICE

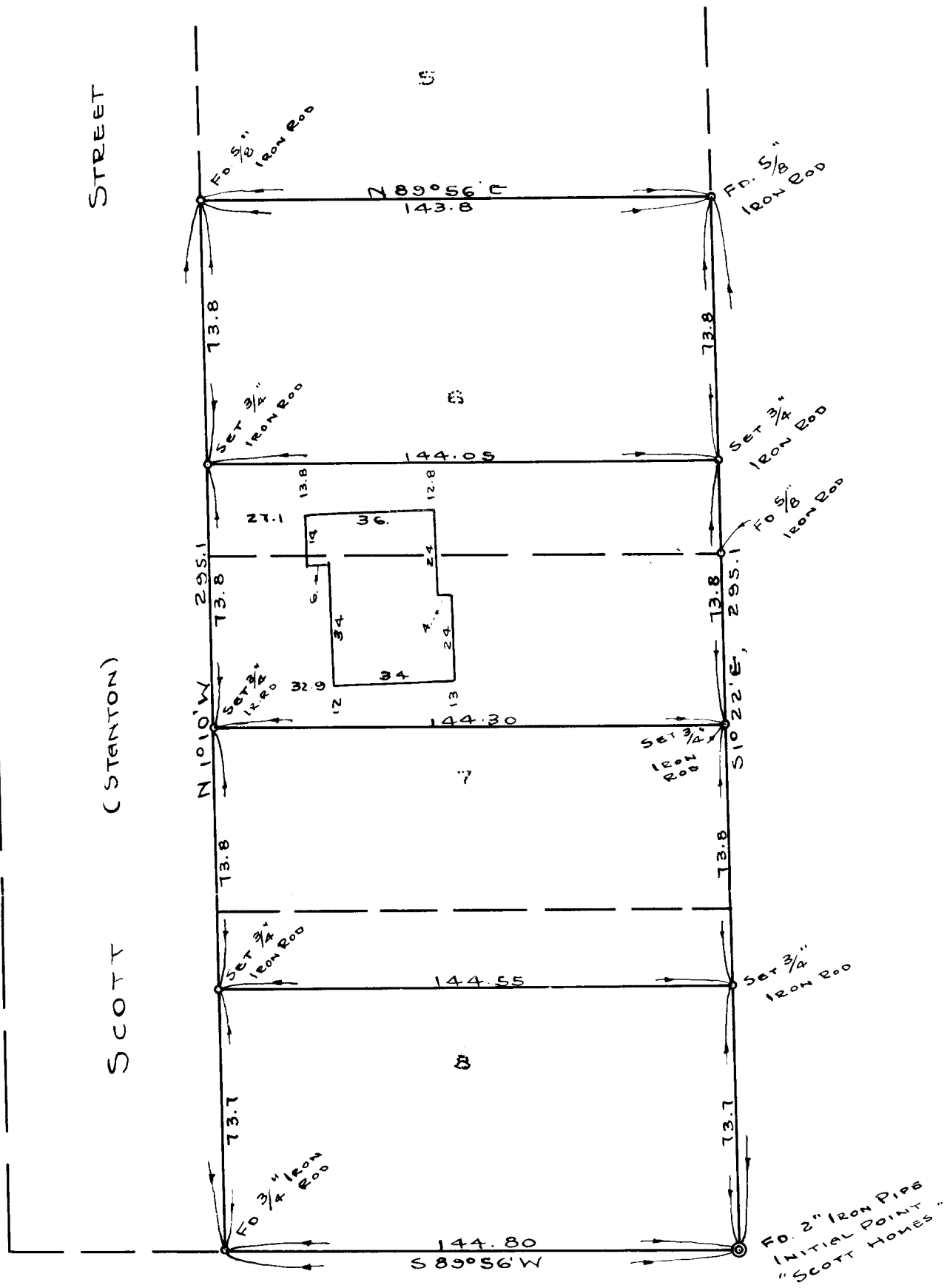
COUNTY SURVEYORS FILE DATA
DO NOT REMOVE FROM OFFICE

1954



SCALE 1" = 40'

BEARINGS SHOWN ARE
RECORD BEARINGS OF
"SCOTT HOMES"



SURVEY TO SET PROPERTY CORNERS
IN LOTS 6-7-8, "SCOTT HOMES"
A PART OF JOHN LEISER D.L.C. NO. 53
T27S., R6W., W.M.
DOUGLAS COUNTY, ORE.

GRANT AND EVANS, ENGINEERS
ROSEBURG, OREGON
SURVEYED DEC. 1954

Arthur Evans

FILED
1954
COUNTY SURVEYOR
DOUGLAS COUNTY, ORE.

41/329

FOR REPAIR