



Menasha, Wisconsin

DEC 20 1954

COUNTY SURVEYOR
DOUGLAS COUNTY, ORE.

SUBDIVISION OF SECTION 36, T23S-R10W

Douglas County, Oregon

Survey Made for Menasha Wooden Ware Corp., November 18, 1954

I commence at the quarter corner between Sections 25 and 36, T. 23S-R10W; thence south on random line, intersecting the south line of Section 36; thence, north on true line from the south quarter corner of Section 36 using a magnetic variation of $22^{\circ}33'36''$ to the north quarter corner of Section 36.

Thence, I begin at quarter corner between Sections 36 and 31, at which corner I scribe one new bearing tree to replace one which is now rotten and set a $3/4''$ iron pipe for the $1/4$ corner from which the new bearing tree is as follows:

A fir 41" in diameter, bears $N19^{\circ}E$, a distance of 30 feet, marked $1/4-S$ 31-BT--329.

Thence, west on random line to the west line of section 36; thence, east from the west quarter corner on the true east and west center line of Section 36, using a magnetic variation of $21^{\circ}05'38''$ to the east quarter corner.

At the intersection of these two corrected center lines I establish the center of the Section at which point I place $3/4''$ iron pipe from which:

An alder 12" bears $N 72^{\circ}E$, a distance of 1.5 ft., marked C-S36-BT--329.

A fir 48" bears west, a distance of 37.7 ft., marked C-S36-BT-329.

Thence, I run on true line from the center of the Section to the north quarter corner, using a magnetic variation of $22^{\circ}33'36''$, and establish a $1/16$ corner at the mid-point on this true line, a distance 1252.9 ft. north of the center of the section, at which point I set a $3/4''$ iron pipe from which:

An alder 16" bears $N 74^{\circ}W.$, a distance of 36.5 ft., marked $1/16-S36-BT-329$.

No other trees convenient to mark. This corner is about 10 ft. north of Lake Creek.

Thence, I run south on random line from the NE corner of Section 36 to the quarter corner between Sections 31 and 36. Thence, north on true line, from the quarter corner between sections 31 and 36 using a magnetic variation of $21^{\circ}38'24''$, finding this line to be 2555.2 feet in length. At the mid-point on this line, or a distance of 1277.6 feet north of the quarter corner, I set an iron pipe from which:

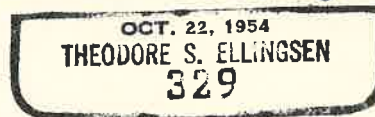
A hemlock 12" bears S 9° W, a distance of 4.5 feet, marked 1/16--S36-BT-329.

A hemlock 18" bears N 34° E, a distance of 41 feet, marked 1/16-S31-BT-329.

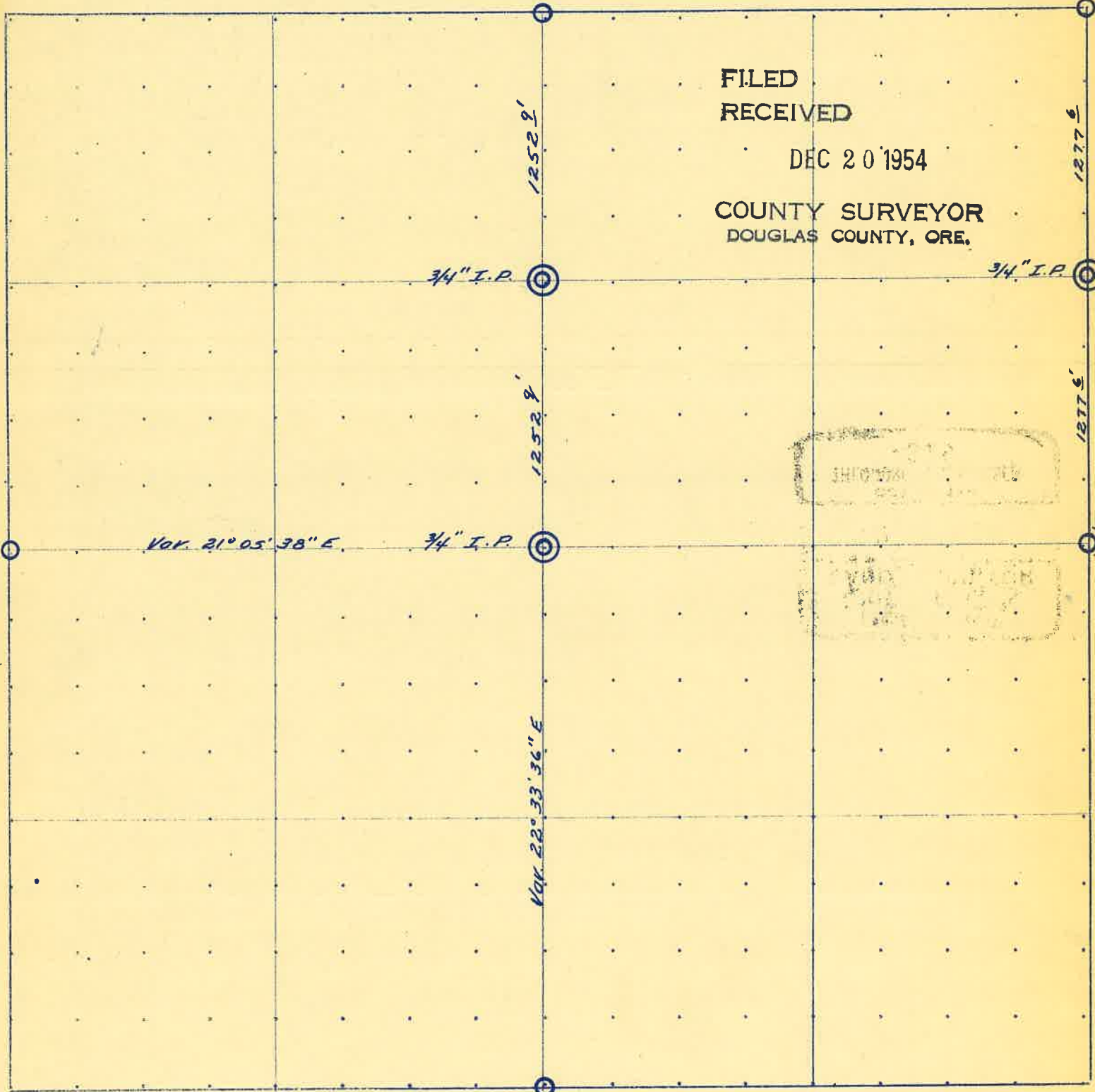
Theodore S. Ellingsen
Theodore S. Ellingsen



Theodore S. Ellingsen



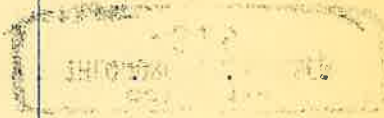
FOR — MENASHA WOODEN WARE CORPORATION



FILED
RECEIVED

DEC 20 1954

COUNTY SURVEYOR
DOUGLAS COUNTY, ORE.



SECTION 36 TOWNSHIP 235 RANGE 10N

DATE Nov. 18, 1954 BY T. S. Ellingsen

- Corners found
- ⊙ Corners established

REGISTERED
OREGON
LAND SURVEYOR

One new BT marked at E 1/4 corner.

Theodore S. Ellingsen

OCT. 22, 1954
THEODORE S. ELLINGSEN
-329