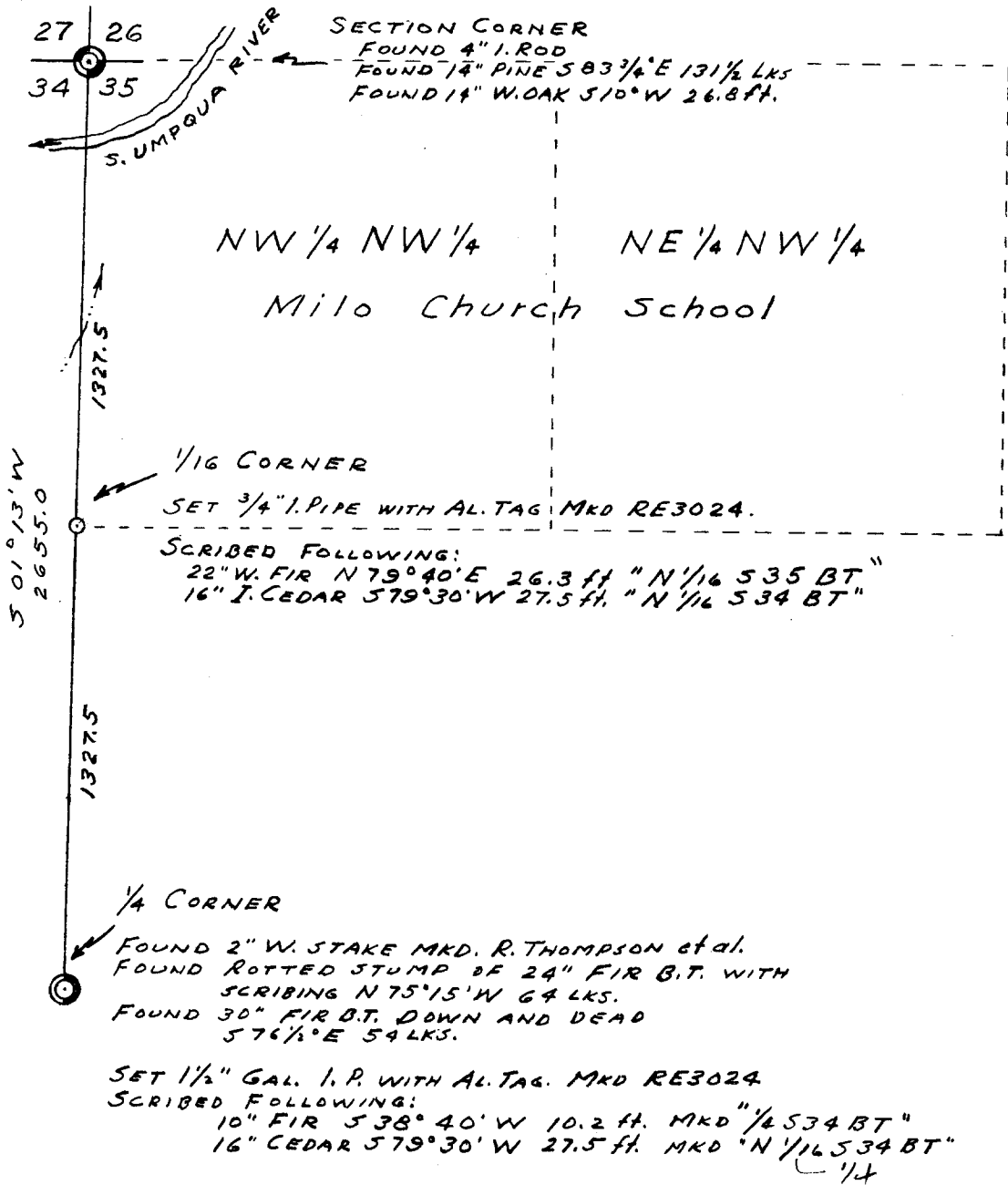


SURVEY OF WEST LINE
OF
NORTH HALF OF NW 1/4
SECTION 35, T.30S., R.3W., W.M.
For

Milo Church School
Scale: 1"=500' November 7, 1954



This survey was executed with a YOUNG and SONS SOLAR COMPASS, 200ft steel tape. Measurements were made on the slope and vertical angles measured with a clinometer in good adjustment. The purpose of the survey was to establish boundaries and corners of timber located along west line of section.

COUNTY SURVEYORS FILE DATA
DO NOT REMOVE FROM OFFICE

FILED
RECEIVED

NOV 10 1954

COUNTY SURVEYOR
DOUGLAS COUNTY, ORE.

RICHARD L. TEMPLIN, JR.
REGISTERED LOGGING ENGINEER
1004 N. W. HAWTHORNE
GRANTS PASS, OREGON

