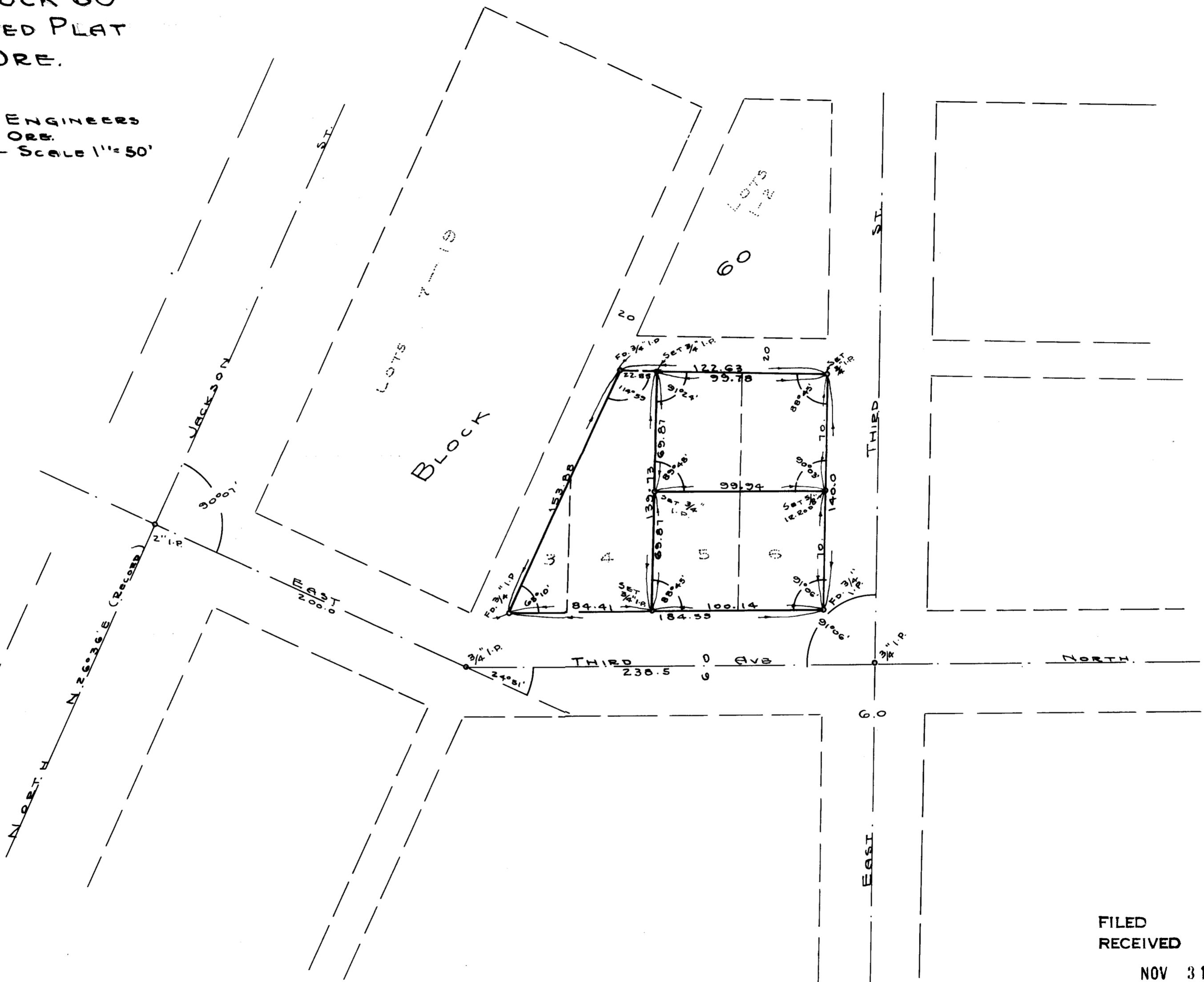
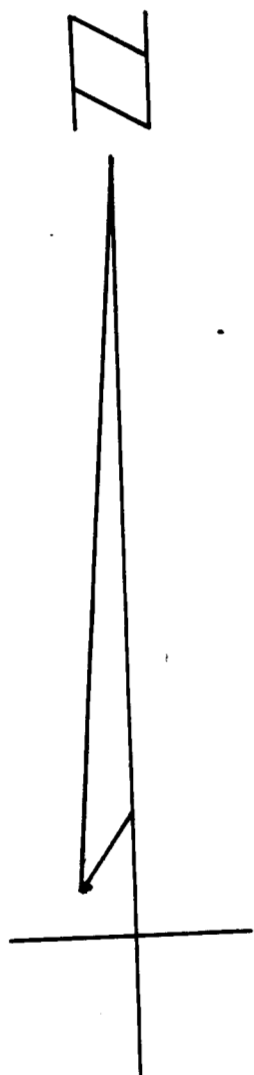


COUNTY SURVEYORS FILE DATA  
DO NOT REMOVE FROM OFFICE

MAP OF SURVEY  
LOTS 5 & 6, BLOCK 60  
KINNEY'S IMPROVED PLAT  
ROSEBURG, ORE.

GRANT AND EVANS, ENGINEERS  
ROSEBURG, ORE.  
SURVEYED 10-1-54- SCALE 1"=50'



FILED  
RECEIVED

NOV 3 1954

COUNTY SURVEYOR  
DOUGLAS COUNTY, ORE.

For Staines Bros. Const. Co.

P. Co. Sur. FILE NO. 41/312