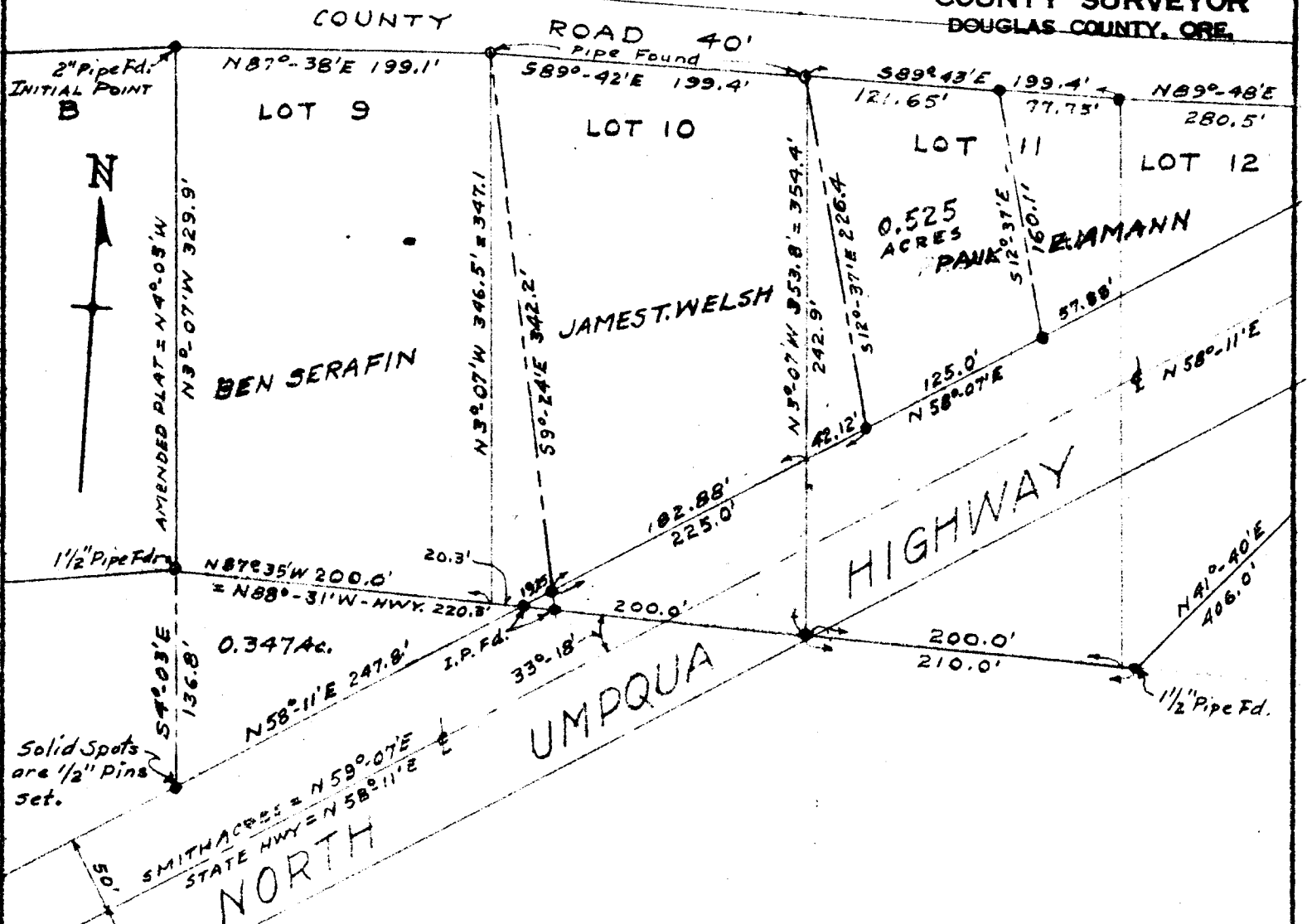


COUNTY SURVEYORS FILE DATA  
DO NOT REMOVE FROM OFFICE

FILED  
RECEIVED

OCT 22 1954

COUNTY SURVEYOR  
DOUGLAS COUNTY, ORE.



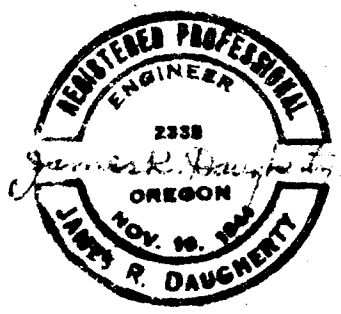
MAP OF SURVEY OF  
 LOTS 9 · 10 & 11  
 SMITH ACRES PLAT  
 AT LONE ROCK

SECT. 17 · T26S · R3W · W.M.  
 DOUGLAS COUNTY  
 OREGON

SURVEYED & PLATTED BY  
 JAMES R. DAUGHERTY  
 CIVIL-SANITARY ENGINEER  
 ROSEBURG · ORE

SCALE 1" = 100'

OCT, 1954.



FOR P. AMANN

11/30/7

PAUL E. AMANN