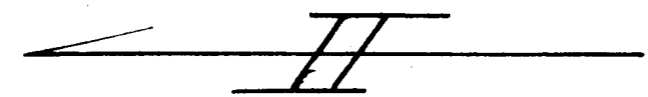
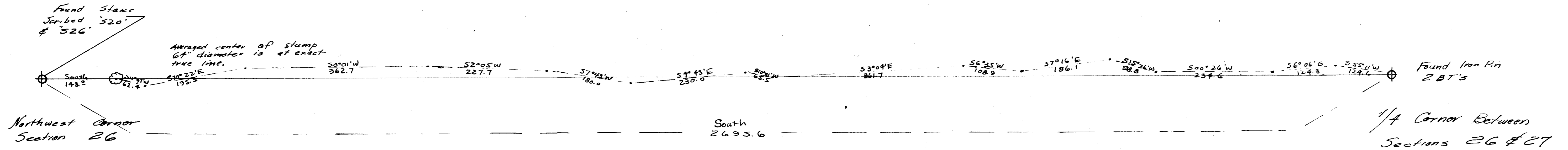


COUNTY SURVEYORS FILE DATA  
DO NOT REMOVE FROM OFFICE

SURVEY of SECTION LINE  
BETWEEN SECTIONS 26 & 27  
TOWNSHIP 21 S., RANGE 5 W. N. M.  
for  
B. C. MILLER



Scale: 1" = 100.0 FT.  
August, 1954

*Robert A. Gunders*

FILED  
RECEIVED

OCT 27 1954

COUNTY SURVEYOR  
DOUGLAS COUNTY, ORE.