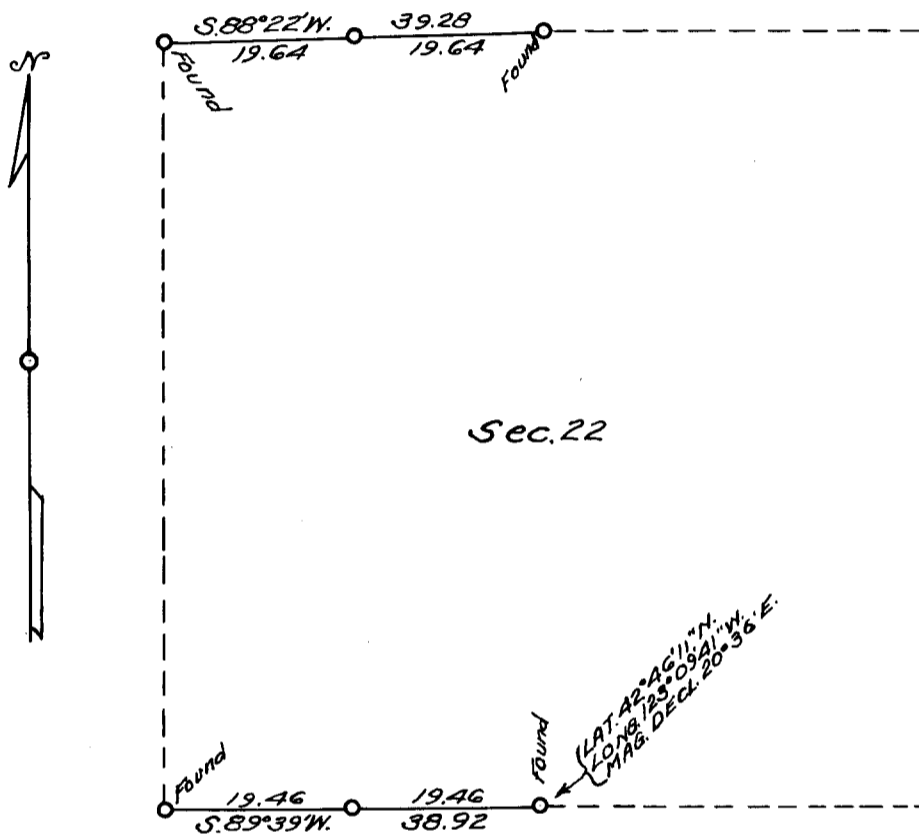


**COUNTY SURVEYORS FILE DATA
DO NOT REMOVE FROM OFFICE**

*T.32S., R.4 W., WILLAMETTE MER., ORE
Dependent Resurvey of Portion of Bdrs. of Section 22*



Scale: 1 in. = 20 chs. = 1320 ft The bearings of all lines are referred to the true Mean Magnetic Declination 20°36'E. meridian determined by solar observations

○ = Corner Occupied or Monumented

———— Line Surveyed

----- Line not Retraced

Survey executed May 26 - August 18, 1954 for Dollar & Patterson Lbr. Co., Inc. of Glendale, Ore.

I hereby certify that the survey represented by this plat is executed in conformity with the Laws of the State of Oregon.

REGISTERED
OREGON
LAND SURVEYOR

Norman D. Price

JULY 7, 1944
NORMAN D. PRICE
No. 33

FILED
RECEIVED

SEP 17 1954

COUNTY SURVEYOR
DOUGLAS COUNTY, ORE.

P

CS FILE FOLDER

CONTAINS

MORE

INFORMATION