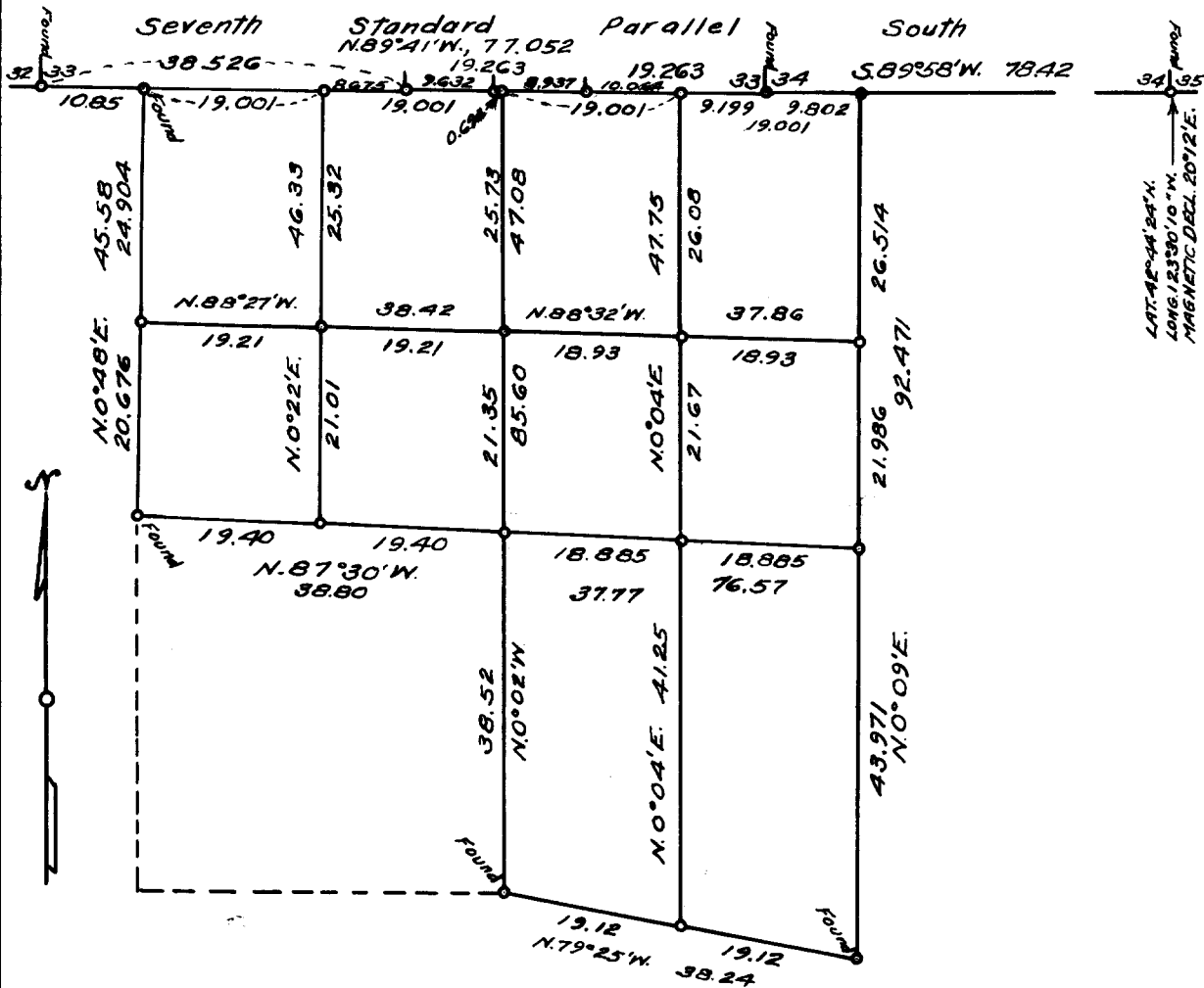


**COUNTY SURVEYORS FILE DATA  
DO NOT REMOVE FROM OFFICE**

*Tps. 32 & 33 S., R. 7 W., W. Mer., Oregon  
Dependent Resurvey of Portion of Seventh Standard Parallel S.,  
S. Boundary of T. 32 S., R. 7 W.,  
Dependent Resurvey of Part of the Bdrs., and Survey of  
Part of the Subdivision of Section 4, T. 33 S., R. 7 W., W.M., Ore.*



Scale: 1 in. = 20 chs. = 1320 ft. The bearings of all lines are referred to the true Mean Magnetic Declination 20° 51' E. meridian determined by solar observations.

O = Corner Occupied & Monumented

— Line Surveyed.

--- Line Not Retraced.

Survey executed March 30 - Aug. 10, 1954 for Dollar & Patterson Lbr. Co., Inc.  
of Glendale, Ore.

I hereby certify that the survey represented by this plat is  
executed in conformity with the Laws of the State of Oregon.

**FILED  
RECEIVED**

SEP 17 1954

COUNTY SURVEYOR  
DOUGLAS COUNTY, ORE.

REGISTERED  
OREGON  
LAND SURVEYOR

*Norman D. Price*

JULY 7, 1944  
NORMAN D. PRICE  
No. 33

CS FILE FOLDER

CONTAINS

MORE

INFORMATION