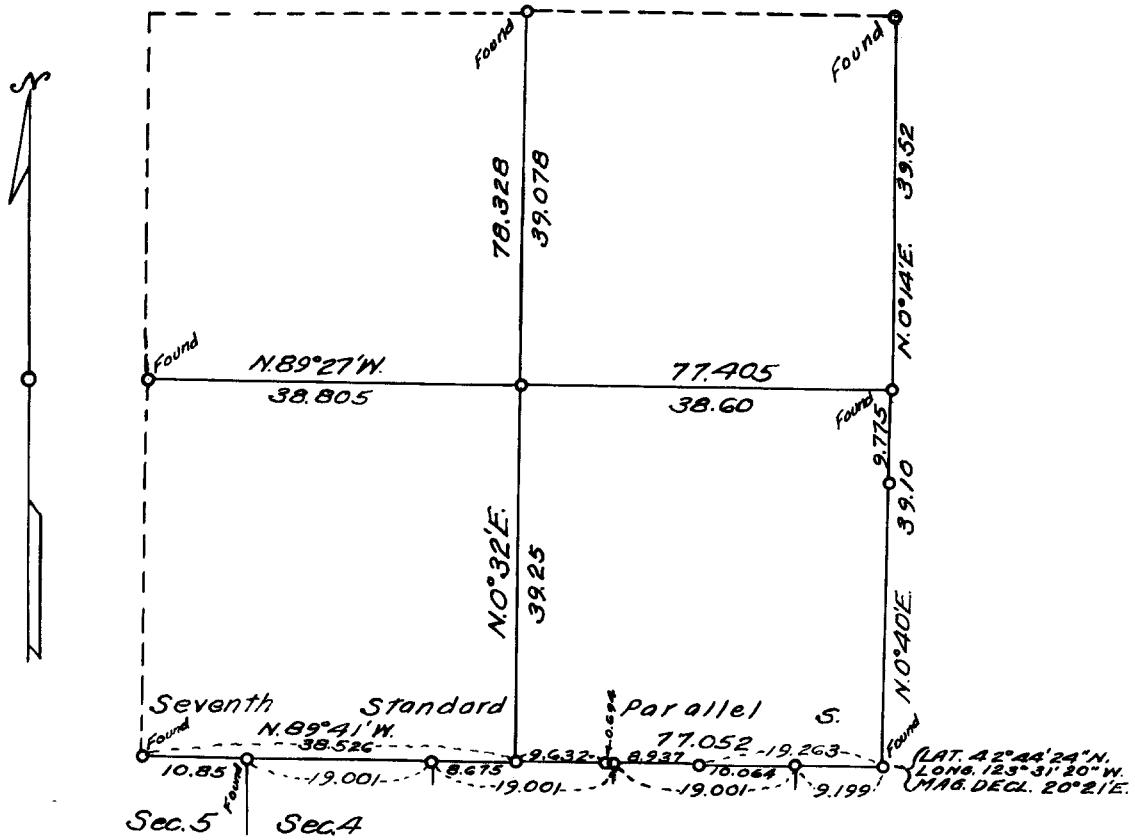


**COUNTY SURVEYORS FILE DATA
DO NOT REMOVE FROM OFFICE**

*T.32S., R.7W., W.MER., OREGON
Dependent Resurvey of E. Bdy. of Section 33,
and
Survey of Part of Subdivision of Sec.33*



Scale: 1 in. = 20 chs. = 1320 ft. The bearings of all lines are referred to the true Mean Magnetic Declination 20°51'E. meridian determined by solar observations

o = Corner Occupied & Monumented
 ——— Line Surveyed. - - - - - Line Not Retraced

Survey executed March 30 - Aug. 18, 1954 for Dollar & Patterson Lbr. Co., Inc. of Glendale, Ore.

I hereby certify that the survey represented by this plat is executed in conformity with the Laws of the State of Oregon.

FILED
RECEIVED

SEP 17 1954

COUNTY SURVEYOR
DOUGLAS COUNTY, ORE.

REGISTERED
OREGON
LAND SURVEYOR

Norman D. Price

JULY 7, 1944
NORMAN D. PRICE
No. 33