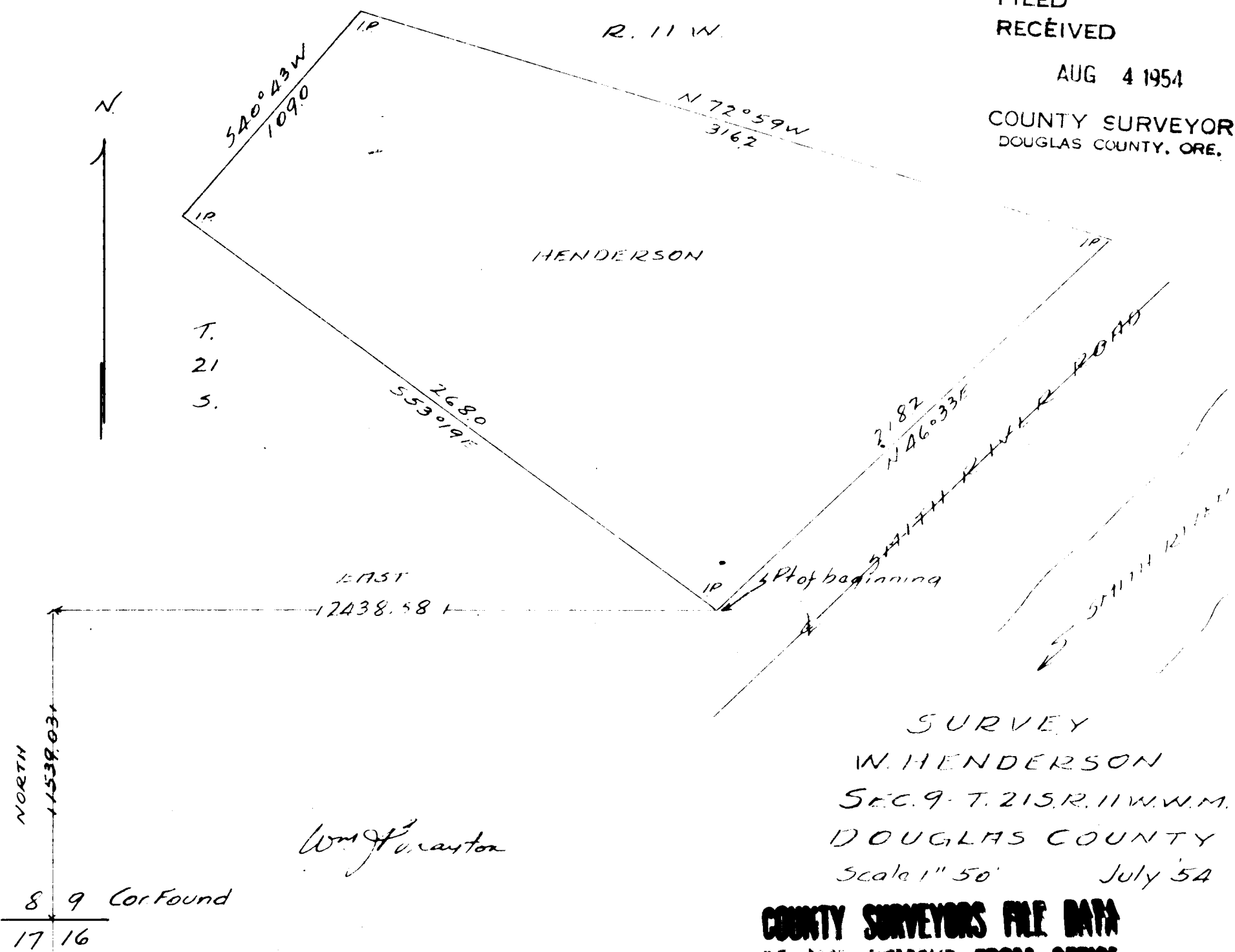


FILED
RECEIVED

AUG 4 1954

COUNTY SURVEYOR
DOUGLAS COUNTY, ORE.



SURVEY
W. HENDERSON
SEC. 9 - T. 21 S. R. 11 W. W.M.
DOUGLAS COUNTY
Scale 1" = 50' July 54

Wm J. Carston

**COUNTY SURVEYORS FILE DATA
DO NOT REMOVE FROM OFFICE**

C.S. FILE 41/283