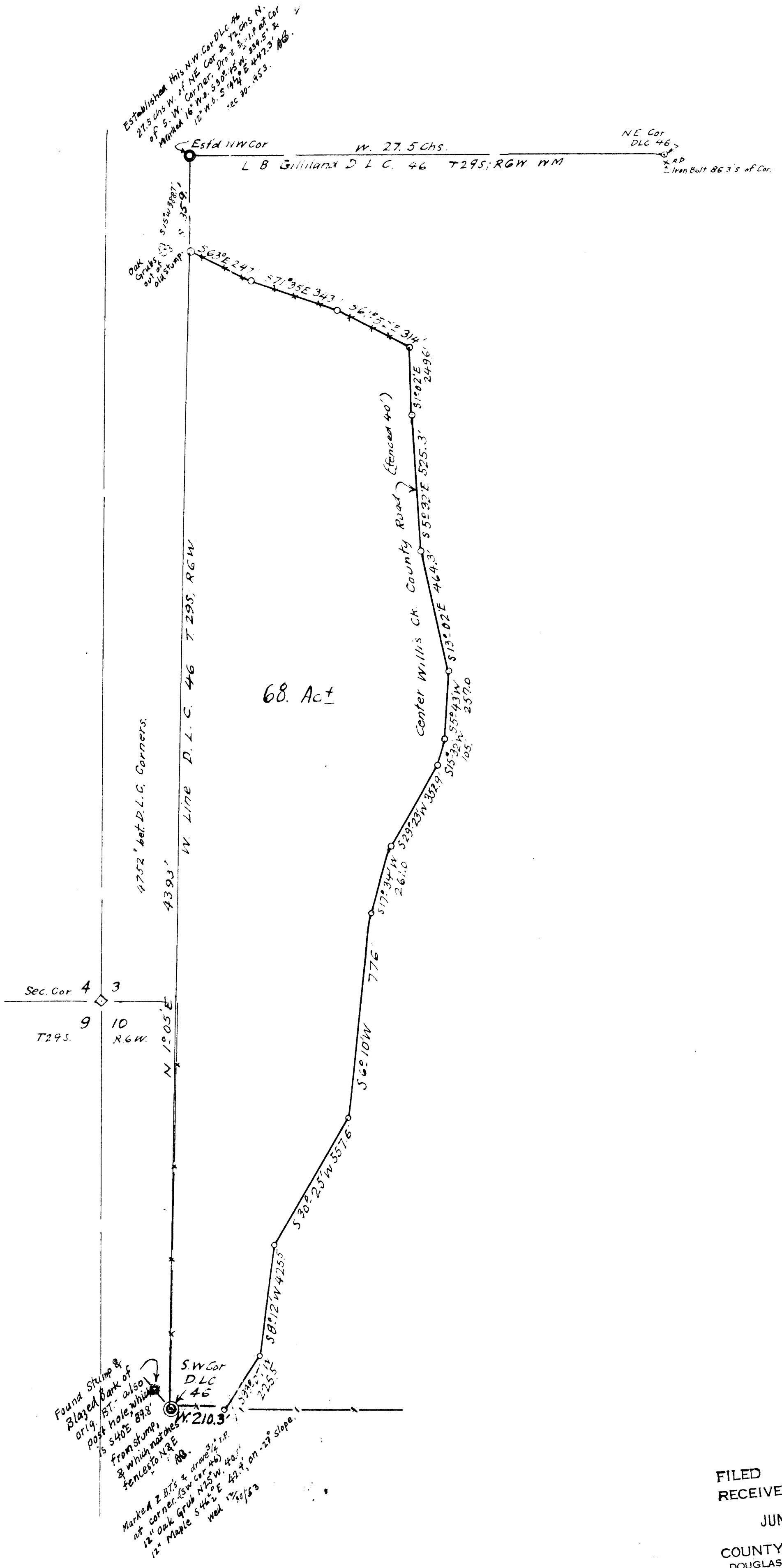


19/1/50

COUNTY SURVEYORS FILE DATA
DO NOT REMOVE FROM OFFICE



Found Stump & Blazed Bank of Orig. BT. also post hole, which is 5402.898' from stump & which matches fence to N&E. Marked 2 BT's & drove 3/4\"/>

FILED
RECEIVED
JUN 12 1954
COUNTY SURVEYOR
DOUGLAS COUNTY, ORE.

Map was prepared by
A. Boyer of Brockway
Ore.

RICE BROS, DILLARD, ORE.
PORTION OF GILLILAND DON. LND. CLM 46
BET CO. ROAD & W. LINE CLAIM.
IN SECS. 3 & 10 T29 S; R6W, WM.
JAN. 1954, BB. 1" = 300'

This is the map of our part
the Gilliland donation land claim
we got in the settlement of the Rice
Bros. partnership with Alton & Lela Rice.

C.S. FILE 41/276 P

ARTHUR BOYER
ROSEBURG, OREGON

L.B.Gilliland Don. Lnd. Claim No 46, T.29 S; R. 6 W; W.M.
N.W. Cor.
S.W. " established.

An effort was first made to find the N.W. cor. or some evidence, but nothing was found except several oak grubs growing out of what seemed to have been a white oak, the tree which might have been the B.T. which was S.15°W. 539 links from this N.W. cor., but this did not seem enough evidence to use although this group of trees did line up well with the corner as finally set although it was about 25' north too far, using the measurement from the S.W. cor.

From here went to the N.E. cor and found the reference point for this cor and measured W. 27.5 chs and set a point, then went to the location for the S.W. cor. of this D.L.C. where the original stump of the orig. B.T. was found with the axe marks in the outer bark of the tree trunk where the scribing was done, showing distinctly but the tree was down leaving only a stump, the inside of the trunk was rotted out. At the given bearing & dist, S.40°E. 136 links, a post hole was found which fit with the fences to the E. & N. From the above a 3/4 inch iron pipe was set here with two witness trees for this S.W. cor of D.L.C. 46, these new trees are,

12" grub oak N.25°W. 40.5 ft

12 maple tree S.46°30'E. 42.4 ft., measured on a 27° slope.

Both trees marked, scribed, C. 46, 1581 B.Y.

This cor. is on a sidehill facing the S.-210.ft W. of cen of co. road and on the S. edge of a wooded tract & at the W. End of an E.& W. fence line.

From here, measured N1°-05'E. 72 chs. or 4752. ft. over three high ridges with steep sides and intersected a point which was measured 27.5 chs. or 1815 ft, from the N.E. cor of this D.L.C. and set a 3/4 inch iron pipe here for the N.W. cor of this claim and from here two witness trees were marked, which are,

16" W.Oak S.30°45'W. 339.5 ft

12" " S.19°15'E. 447.3 ft.

Both trees marked, scribed, C. 46 1581 B.T.

Witnesses for both trees, A.B.RICE, A.E.RICE, HOY RICE, VICTOR RICE, LOYAL MOHR.

Date, Dec. 30, 1953.

The N.W. cor is out in a 'prairie' 359 ft. N. of an E.& W fence line and abt. 815 ft. W. of the cen of co. road. the wit. trees are on the N. edge of timbered tract.


Arthur Boyer

FILED
RECEIVED

JUN 12 1954

COUNTY SURVEYOR
DOUGLAS COUNTY, ORE.