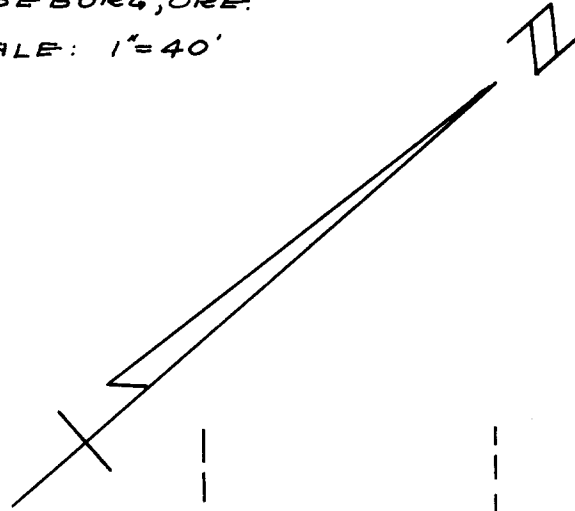


SURVEY TO ESTABLISH PROPERTY LINES
 LOTS 7 & 8 AND NE 1/2 OF LOTS 1 & 2, BLOCK ONE
 CITY OF MYRTLE CREEK
 SECTION 28, T.29S., R.5W., W.M.
 DOUGLAS COUNTY, OREGON
 WILVER E. & LOUISE ING

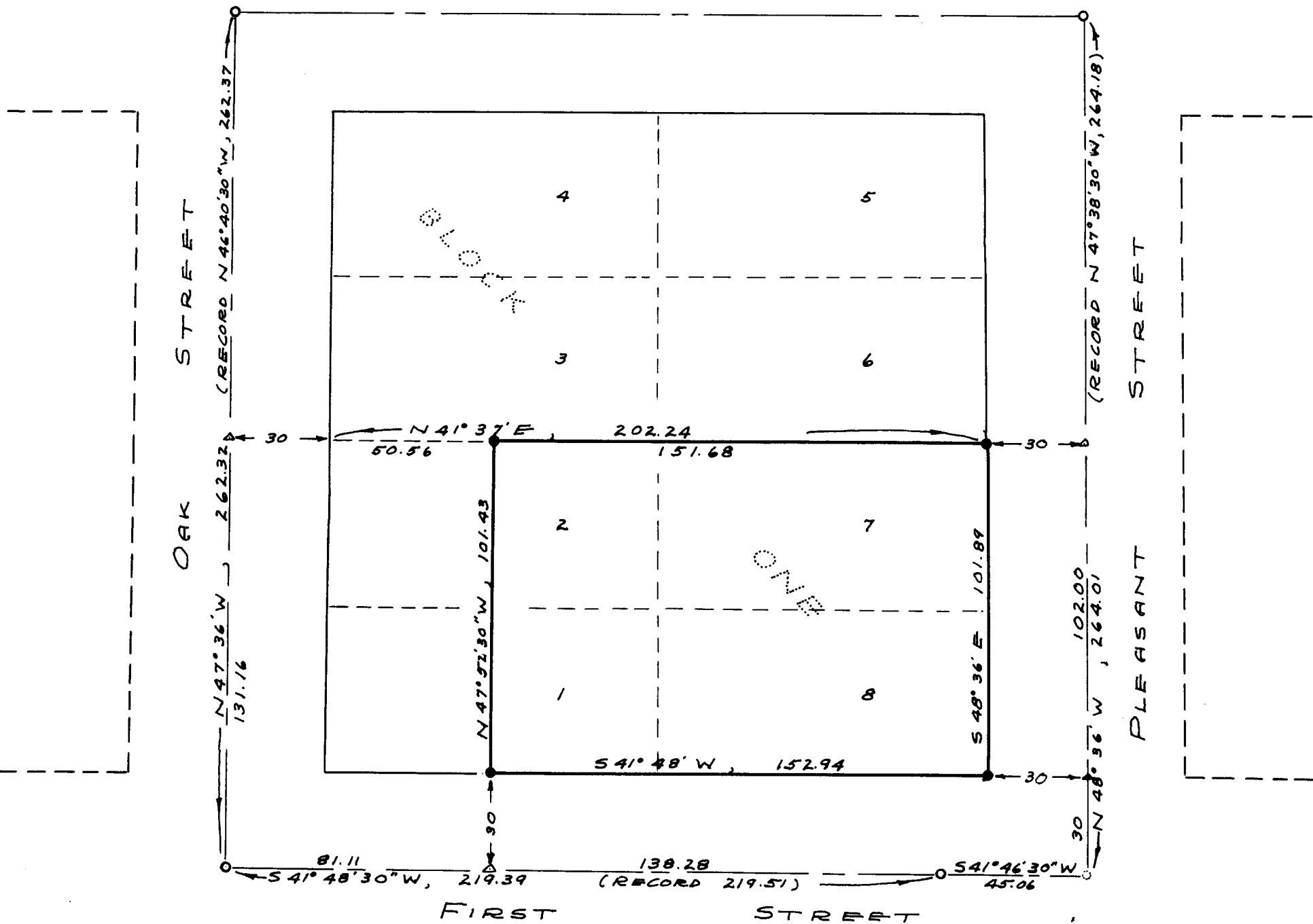
GRANT AND EVANS, ENGINEERS ROSEBURG, ORE.

SURVEYED OCT. 30, 1953 SCALE: 1"=40'

COUNTY SURVEYORS FILE DATA
 DO NOT REMOVE FROM OFFICE



SECOND STREET



- STANDARD ST. MON. FOUND
- NAIL WITH SHINER FOUND
- 3/8" DIA. IRON ROD SET

FILED
 RECEIVED

JAN 5, 1954

COUNTY SURVEYOR
 DOUGLAS COUNTY, ORE.