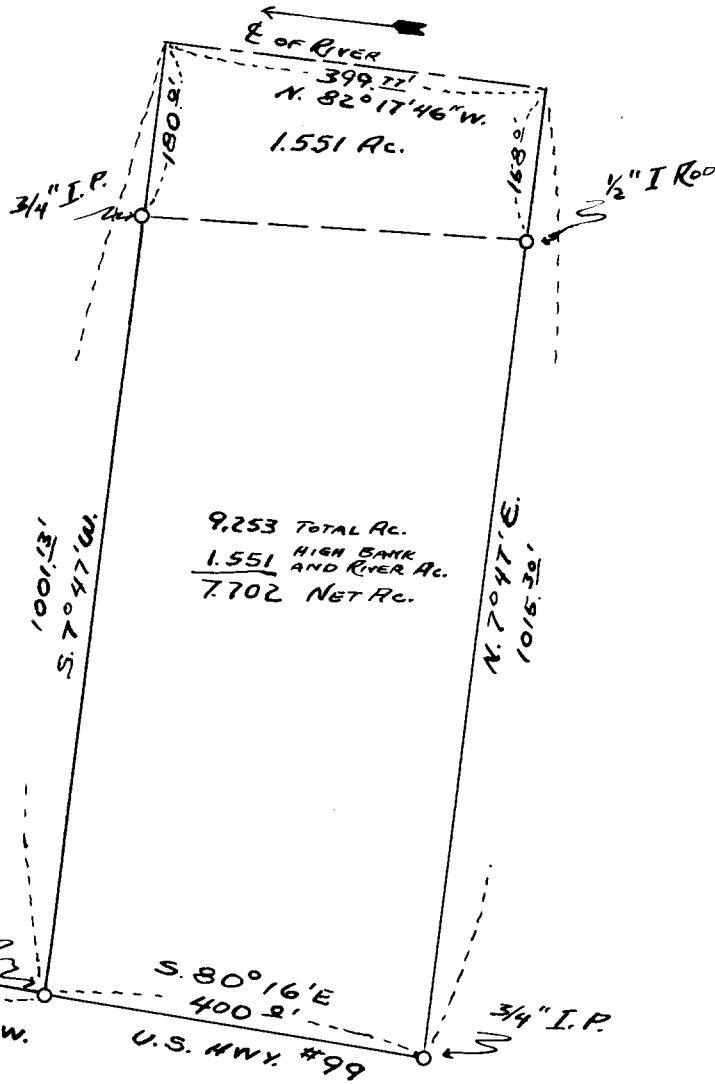


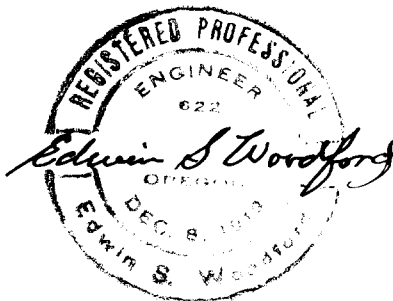
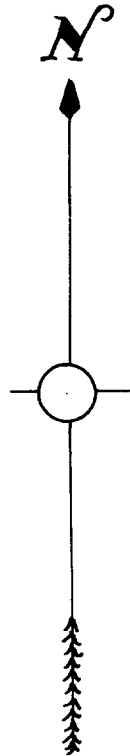
COUNTY SURVEYORS FILE DATA
DO NOT REMOVE FROM OFFICE

Map

of
Portion of Helgesen Ranch
Section 12 - Tp 29 S - Range 6 W W.M.
Scale: 1" = 200' Aug. 1955



9,253 TOTAL AC.
1,551 HIGH BANK AND RIVER AC.
7,702 NET AC.



COUNTY SURVEYORS
RECEIVED

AUG 18 1955

RECEIVED

11 12
14 13

TR. 29 S - RANGE 6 W. W.M.

WOODFORD FILE 110

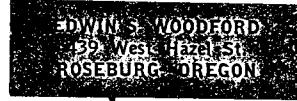
C. S. File No. 41/236 A

Woodford
File # 110

Woodford File No
110

EDWIN S. WOODFORD
REGISTERED CIVIL ENGINEER

PHONE 3-7093



SURVEYED FOR - Alvin Helgesen.

Date of survey - August 1955.

Object of Survey - Layout Tract of Land
Containing 7.702 Acres

Location of Land Surveyed - Section 12 Tp 29S-R96
WWM.

Type of Map Filed - Cloth Tracing.

DESCRIPTION OF LAND SURVEYED

See Accompanying Sheet.

Helgesen - Description 9.253 acre Tract
Beginning at a 3/4" x 30" iron pipe on the Northerly right-
of-way line of Pacific Highway #99, from which the corner to
Sections 11, 12, 13 and 14, T 29 S R 6 W of Willamette Meridian
bears N 80° 16' W 199.95 ft., S 7° 47' W 1746.8 ft. and
S 7° 44' W 672.8 ft.

Thence S 80° 16' E 400.00 ft. along the Northerly right-of-way
line of said Highway #99 to a 3/4" x 30" iron pipe.

Thence N 70° 47' E 857.3 ft. to a 1/2" iron rod on the high
bank of the South Umpqua River.

Thence continuing N 70° 47' E 158.00 ft. to the center of said
river.

Thence downstream along the center of said river N 82° 17' 46" W
399.77 ft.

Thence S 7° 47' W 180.00 ft. to a 3/4" iron pipe on the high
bank of said South Umpqua River.

Thence continuing S 7° 47' W 821.13 ft. to the place of
beginning, containing 9.253 acres, more or less. The acreage of
portion lying below the high bank of the river is 1.551 acres,
more or less.

FILED
RECEIVED

JAN 18 1956

COUNTY SURVEYOR
DOUGLAS COUNTY, ORE.

C. S. File No. 41/236 b

FILED
RECEIVED
JAN 18 1956
COUNTY SURVEYOR
DOUGLAS COUNTY, ORE.

C. S. File No. 41/236 b