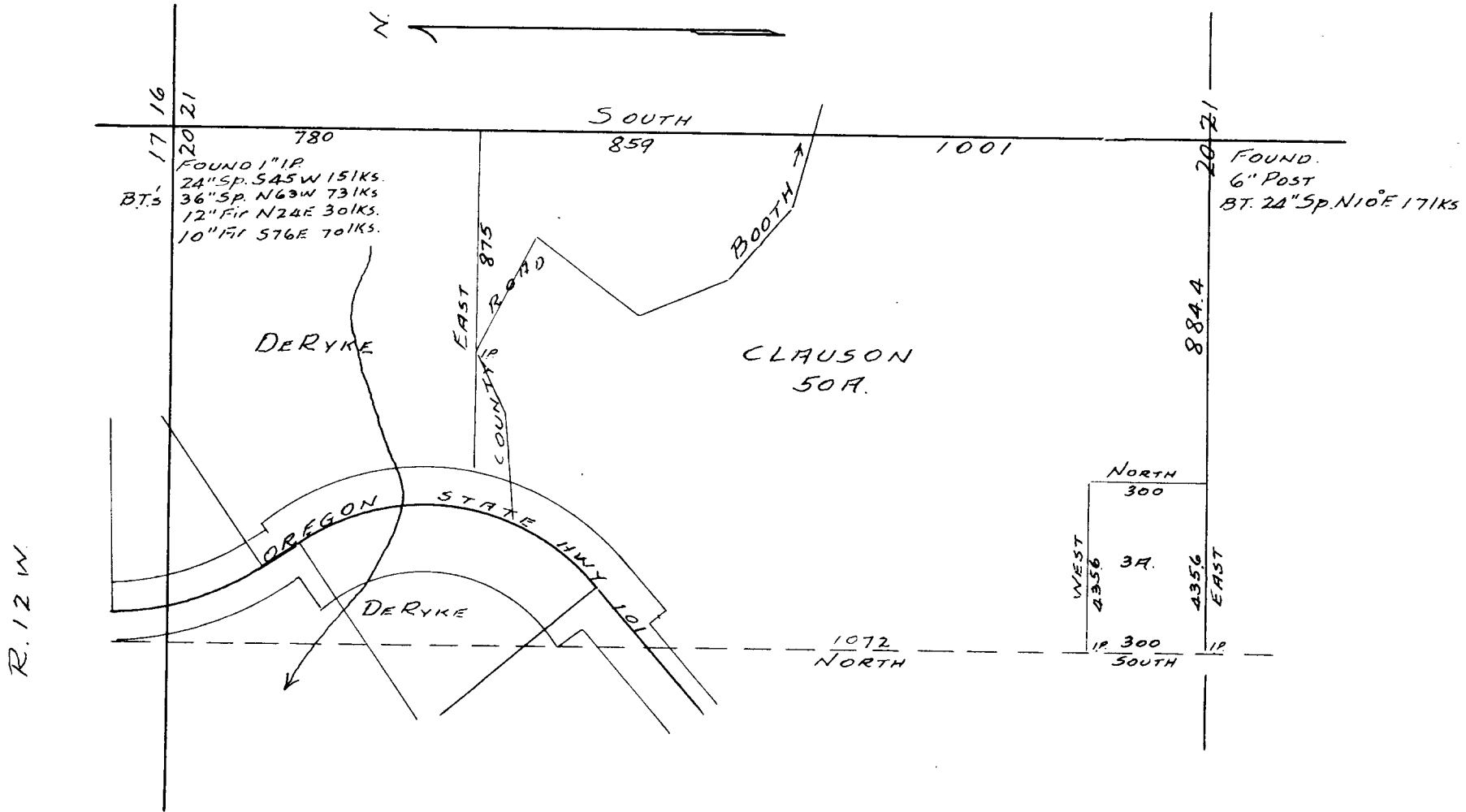


T. 20 S.



R. 12 W.



SURVEY  
 DERYKE & CLAUSON  
 E. 1/2 N.E. 1/4 SEC. 20, T. 20 S. R. 12 W. W.M.  
 DOUGLAS COUNTY  
 Scale 1" = 400' Nov. 1953

FILED  
 RECEIVED

COUNTY SURVEYORS FILE DATA  
 DO NOT REMOVE FROM OFFICE

NOV 20 1953  
 COUNTY SURVEYOR  
 DOUGLAS COUNTY, ORE.

C.B. 41/231 P