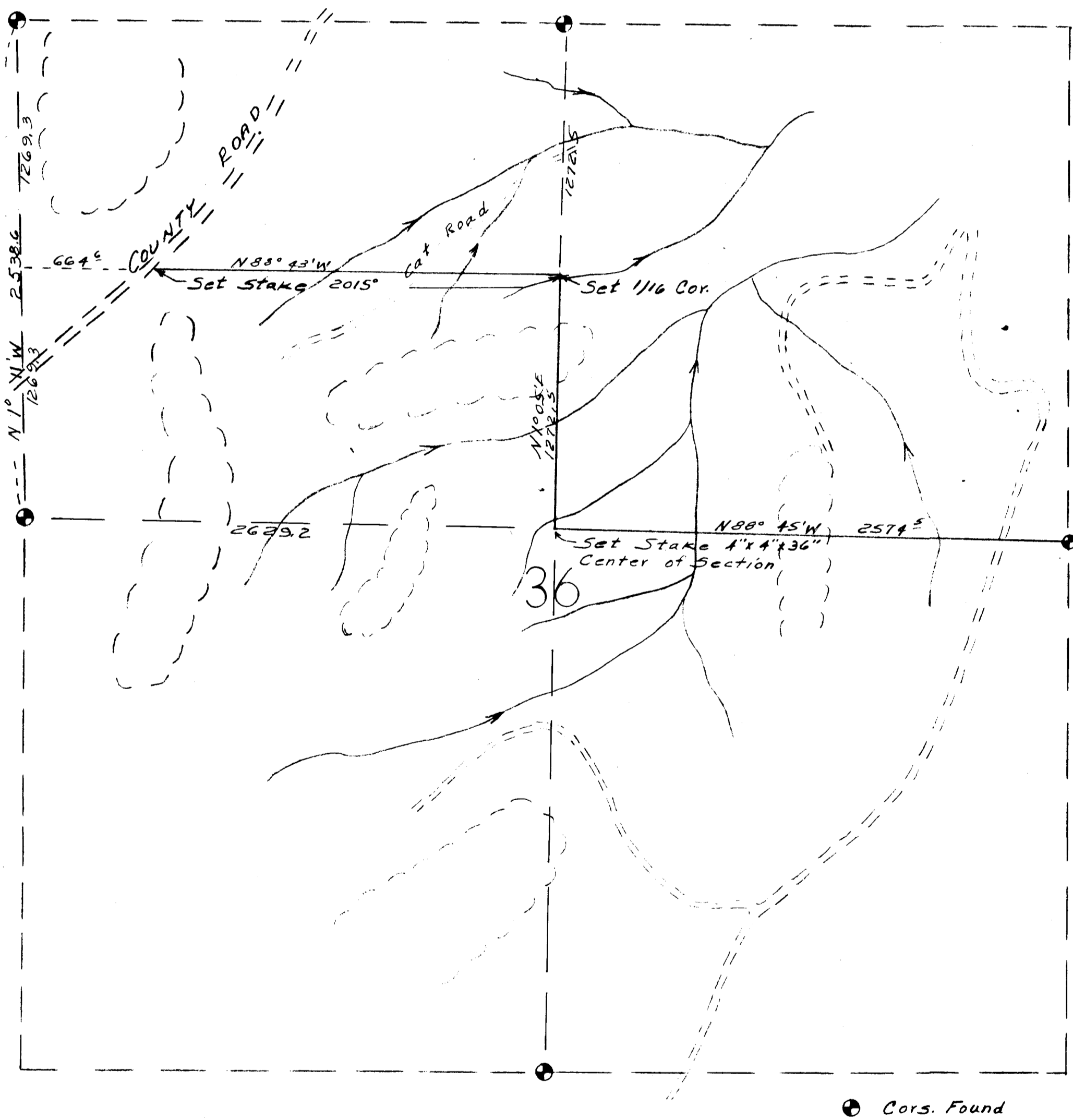


COUNTY SURVEYORS FILE DATA  
DO NOT REMOVE FROM OFFICE

SURVEY for W.A. WOODARD LUMBER CO.  
SEC. 36 TWP. 22 S; R. 4 W. W.M.  
SCALE: 1" = 500.0' OCT. 1953



REGISTERED  
OREGON  
LAND SURVEYOR  
*Gilbert A. Gardner*  
GILBERT A. GARDNER  
NOV. 2, 1951  
276

FILED  
RECEIVED  
Oct 24 1953  
COUNTY SURVEYOR  
DOUGLAS COUNTY, ORE.