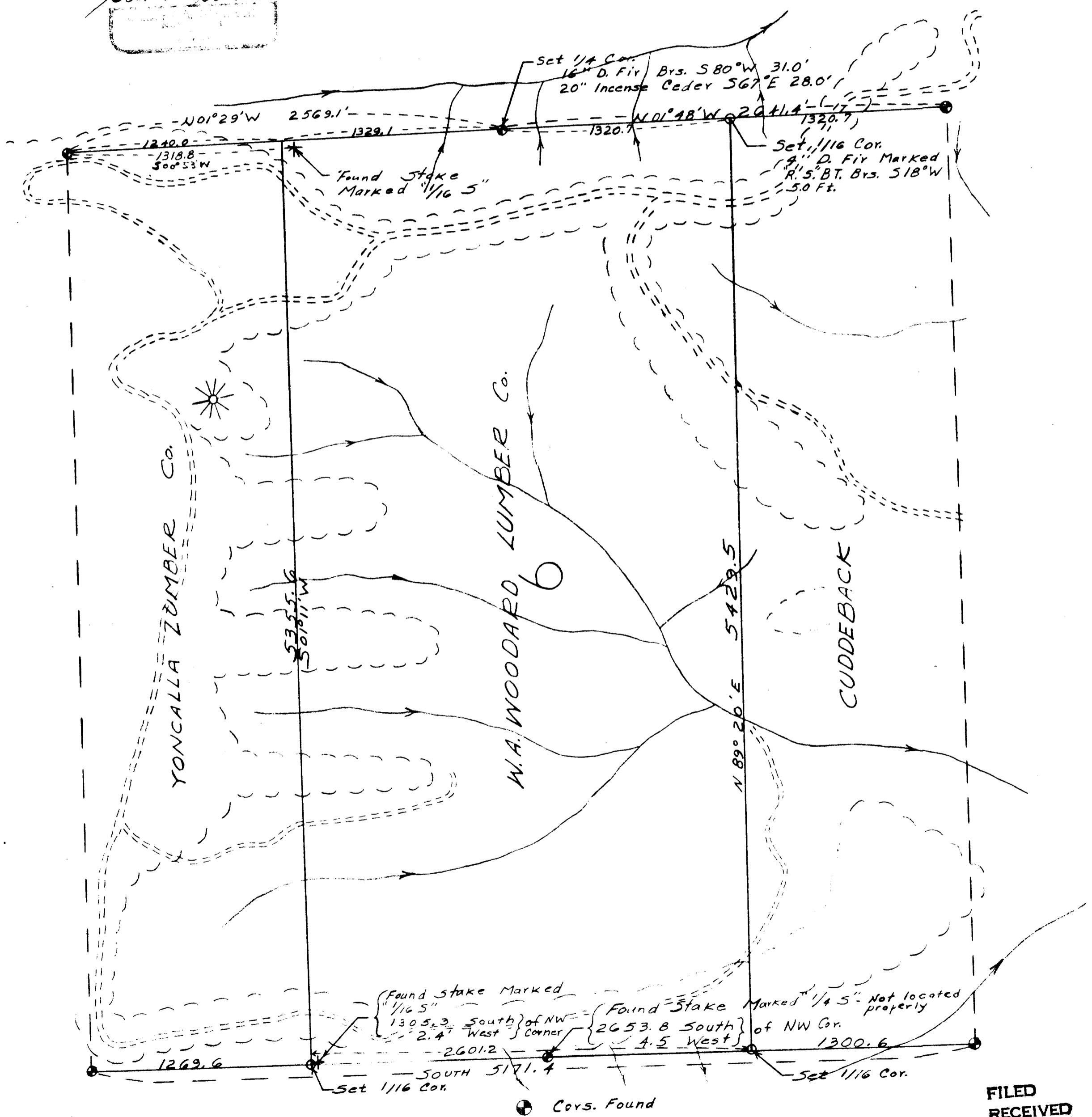
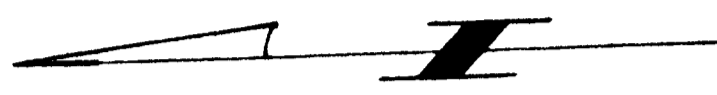


SURVEY for W.A. WOODARD LUMBER CO.
SEC. 6 TWP. 22S; R. 4W.W.M.
SCALE: 1" = 500.0' OCT. 1953

FILED
OREGON
Gitter & Co. Inc.



FILED
RECEIVED
Oct 24 1953
COUNTY SURVEYOR
DOUGLAS COUNTY, ORE.