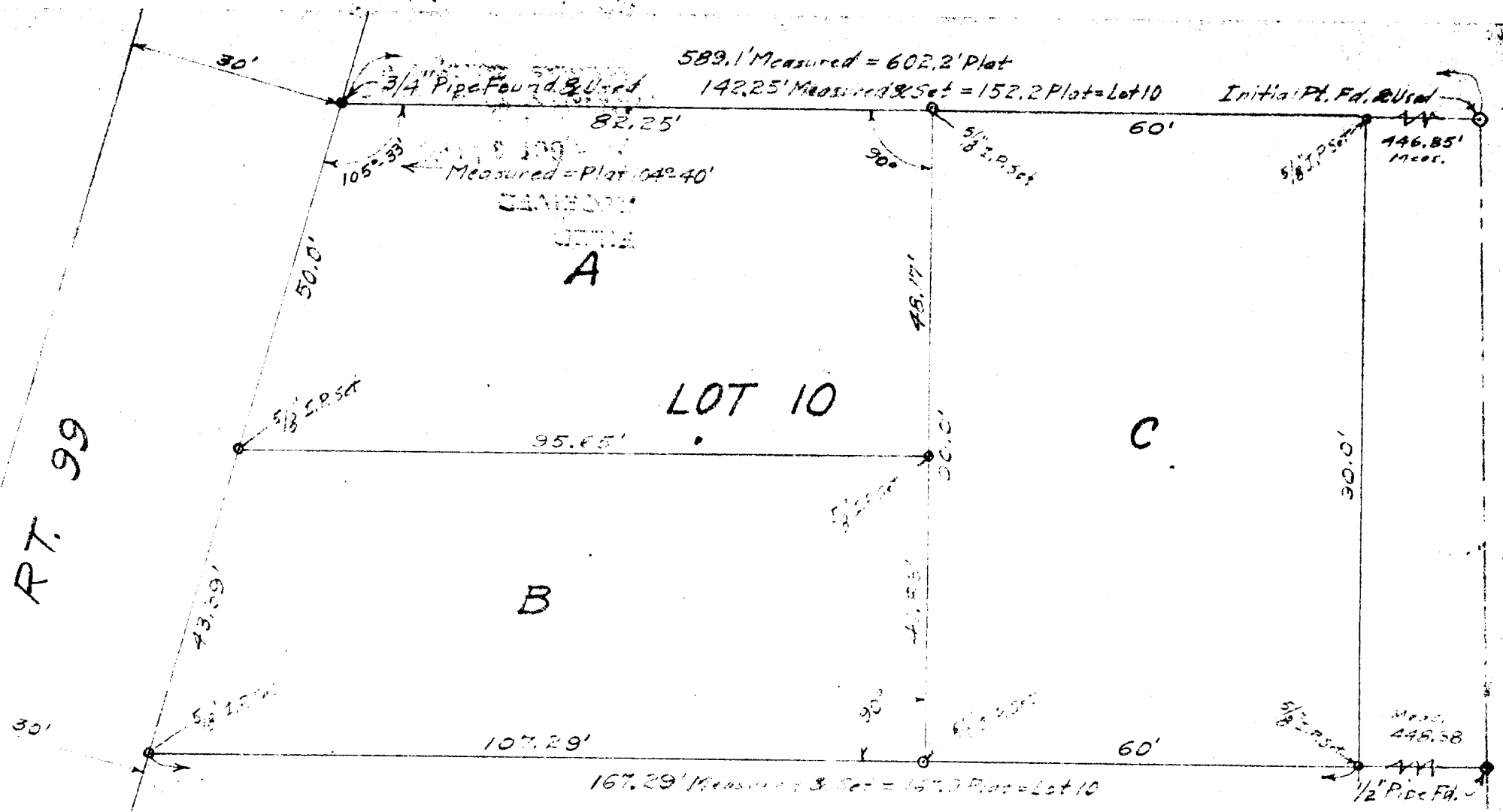




RT. 99



JORGEN STREET 40'

MAP OF SURVEY & SUBDIVISION LOT 10

JORGEN'S SUBDIVISION - WINSTON - OREGON



Made & Platted By
JAMES R. DAUGHERTY
 CIVIL-SANITARY ENGINEER
 ROSEBURG, OREGON

FILED
RECEIVED

OCT 31 1953

COUNTY SURVEYOR
DOUGLAS COUNTY, ORE.

SCALE 1" = 20'

APR 1952.

COUNTY SURVEYORS FILE DATA
 DO NOT REMOVE FROM OFFICE