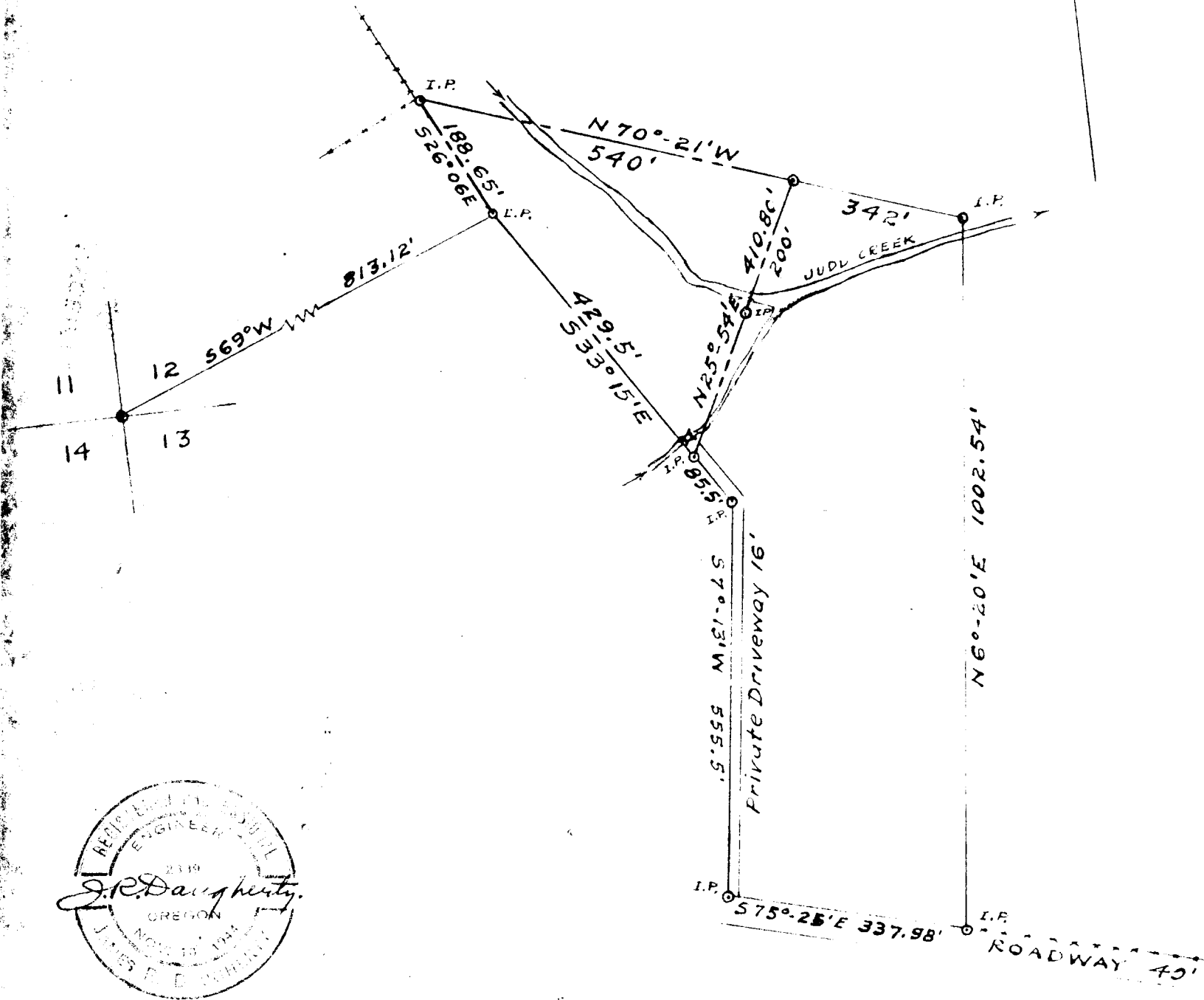


MAP SHOWING GEORGE M. GIBSON PARCEL

SECTION 12 & 13 · T 30 S · R 6 W · W. M.
DOUGLAS COUNTY
OREGON

Surveyed & Platted By
JAMES R. DAUGHERTY
Civil-Sanitary Engineer
REGISTERED PROFESSIONAL ENGINEER
ROSEBURG · ORE.



SCALE 1" = 200'

Geo. M. Gibson
To
Herman Haugen - 2.293A.

July 1948