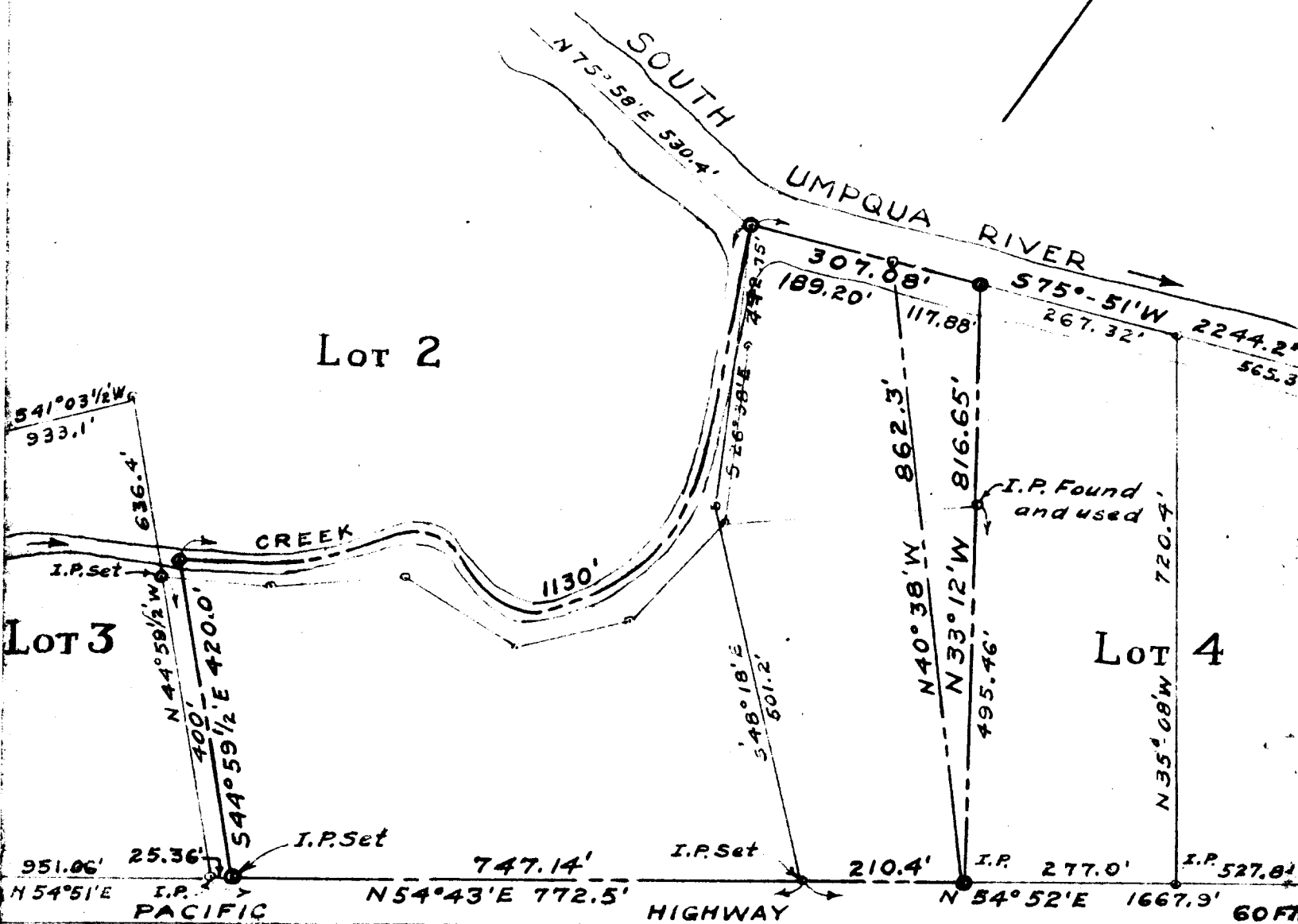
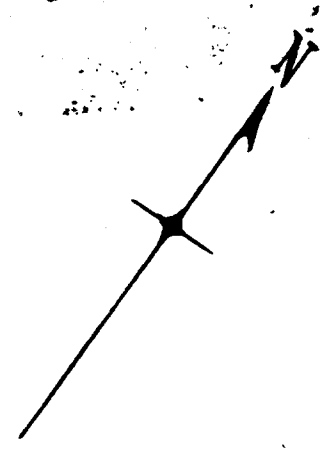


MAP OF SURVEY ADJOINING PARTS OF LOTS 2 & 4

PACIFIC HIGHWAY FRUIT LANDS
SEC. 2 · T 28 S · R 6 W · W. M.
DOUGLAS COUNTY
OREGON



FILED
RECEIVED

OCT 9 1953

COUNTY SURVEYOR
DOUGLAS COUNTY, ORE.



SURVEYED & PLATTED BY
JAMES R. DAUGHERTY.
CIVIL-SANITARY ENGR.
REGISTERED PROFESSIONAL ENGINEER
ROSEBURG · ORE.

COUNTY SURVEYORS FILE DATA

SCALE 1" = 200'

June 1948