

COUNTY SURVEYOR  
DOUGLAS COUNTY, OREGON

# L.A. RHODEN • LOT 3 • BLOCK 31

230 N. STEPHENS STREET  
ROSEBURG • ORE.

## W. WASHINGTON ST. 60'

Tack Fd.

1.48'

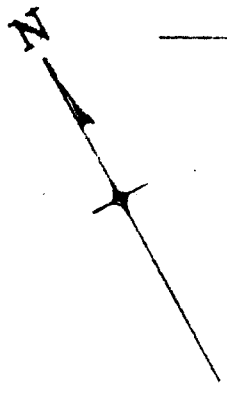
282.94'

284.42'

Mon. Fd.

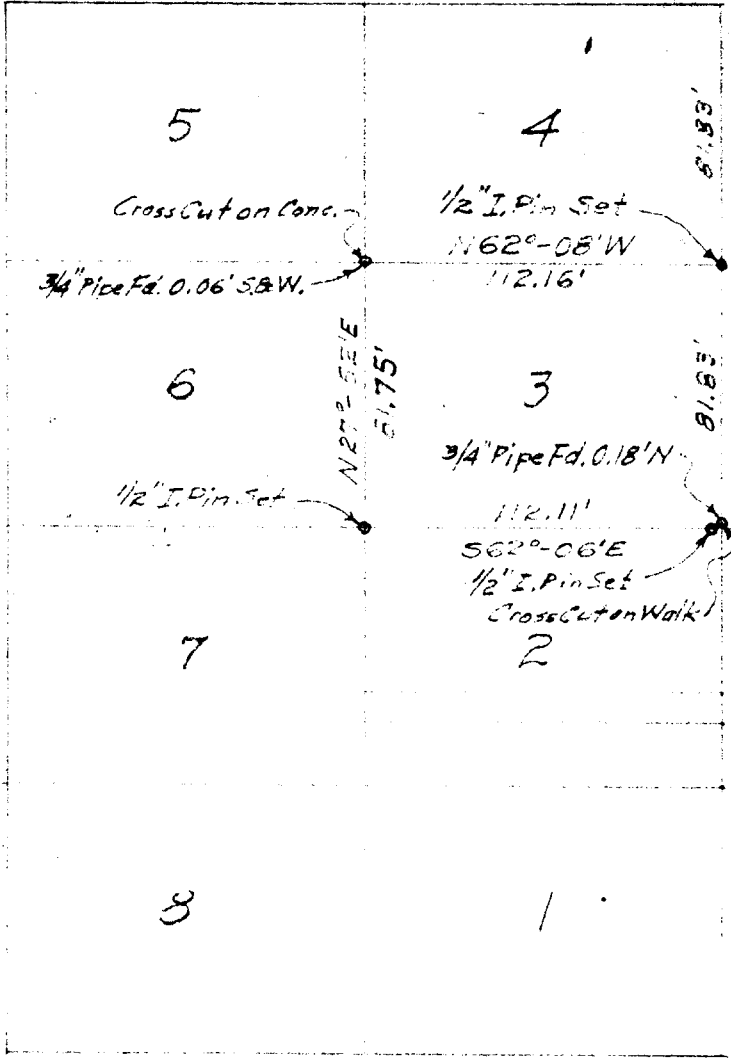
Iron Pin Fd.

89° 55'



N. PINE ST. 60'

386.53'



N. STEPHENS ST.

N 27° 54' E 557.44'  
Oregon State Hwy Dept. Bearing -- E

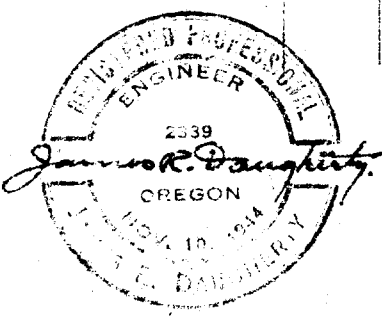
## W. OAK ST. 60'

Tack Fd.

284.03'

Mon. Fd.

89° 55'



Surveyed & Platted By  
**JAMES R. DAUGHERTY**  
CIVIL-SANITARY ENGINEER  
ROSEBURG ORE.

FILED  
RECEIVED

OCT 31 1953

SCALE 1" = 60'  
Sept. 1951

COUNTY SURVEYOR  
DOUGLAS COUNTY, ORE.