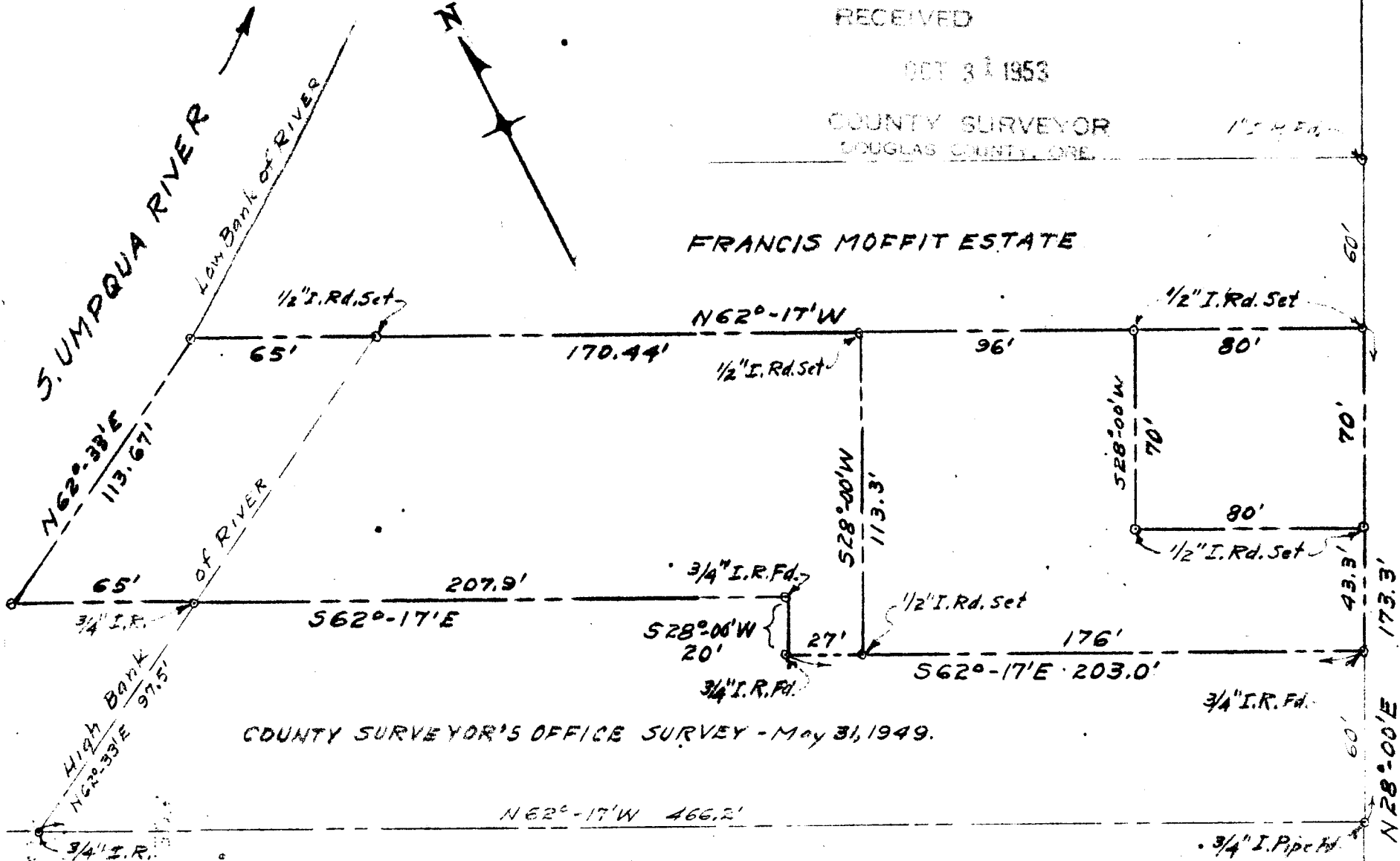


FILED
RECEIVED

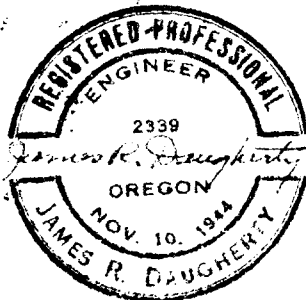
OCT 3 1953

COUNTY SURVEYOR
DOUGLAS COUNTY, ORE.

1" = 50'



COUNTY SURVEYOR'S OFFICE SURVEY - May 31, 1949.



MAP OF THE
HANNAH ROACH LOT

Surveyed & Plotted By
JAMES R. DAUGHERTY
CIVIL-SANITARY ENGINEER
ROSEBURG, ORE.

CHAMBERLIN TO CONN
VOL. 133 PG 475 D.R.

July 1952

SCALE 1" = 50'

MAPLE
ST.

N. FLINT ST. 60'

3