

COUNTY SURVEYORS FILE DATA
DO NOT REMOVE FROM OFFICE

MAP OF SURVEYS IN
JONES ADDITION - AMENDED
ROSEBURG - ORE.

Made & Platted By
JAMES R. DAUGHERTY
CIVIL-SANITARY ENGINEER
ROSEBURG - ORE.



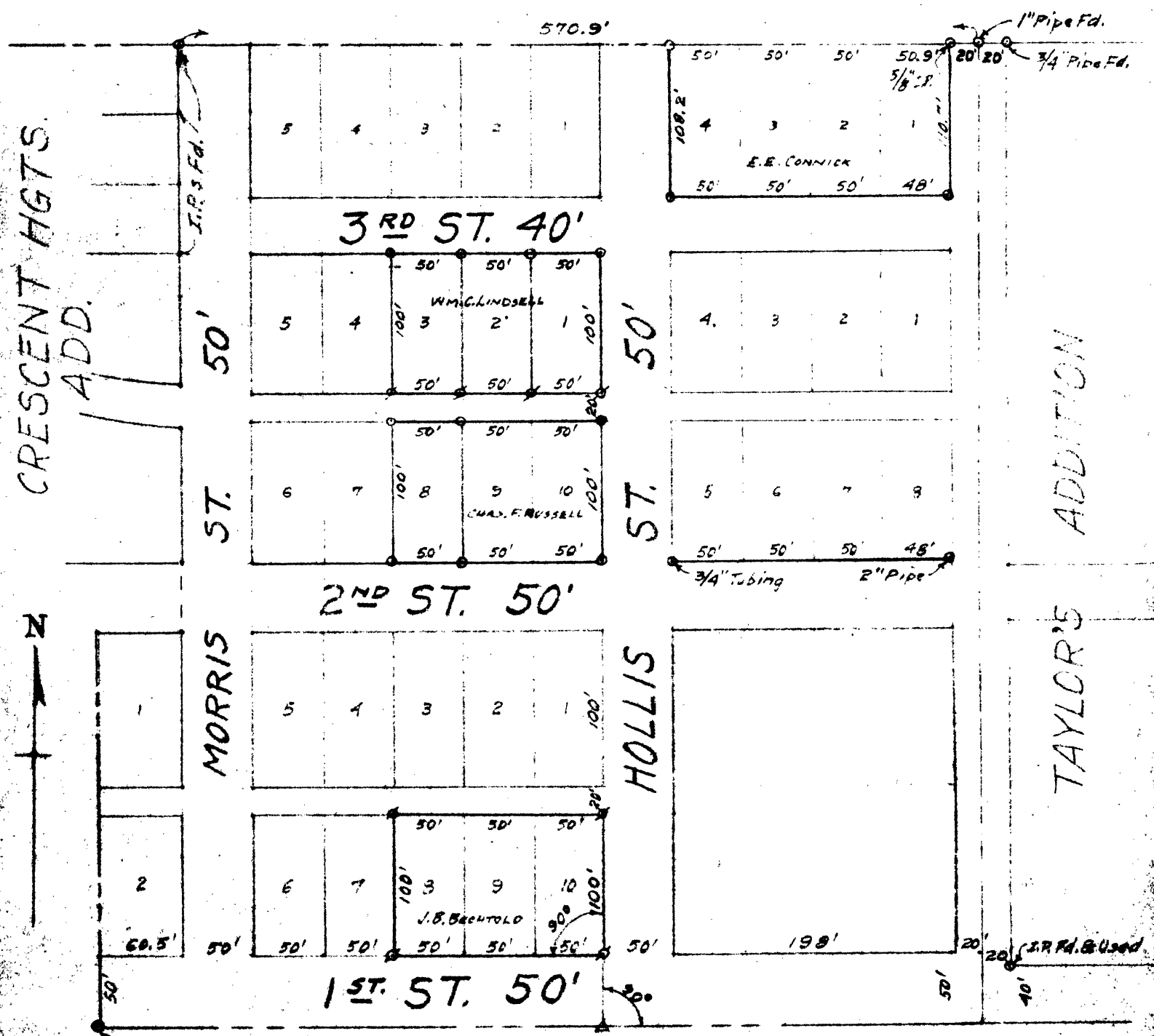
FILED
RECEIVED

OCT 31 1953

COUNTY SURVEYOR
DOUGLAS COUNTY, ORE.

SCALE 1" = 100'

JAN. 1952



I.P. Mon. Fd. & Used
N.W. Cor W.T. PERRY
D.L.C. #38

LEGEND
5/8" I.P. Set 1/2" I.P. Set