



COUNTY SURVEYORS FILE DATA
DO NOT REMOVE FROM OFFICE

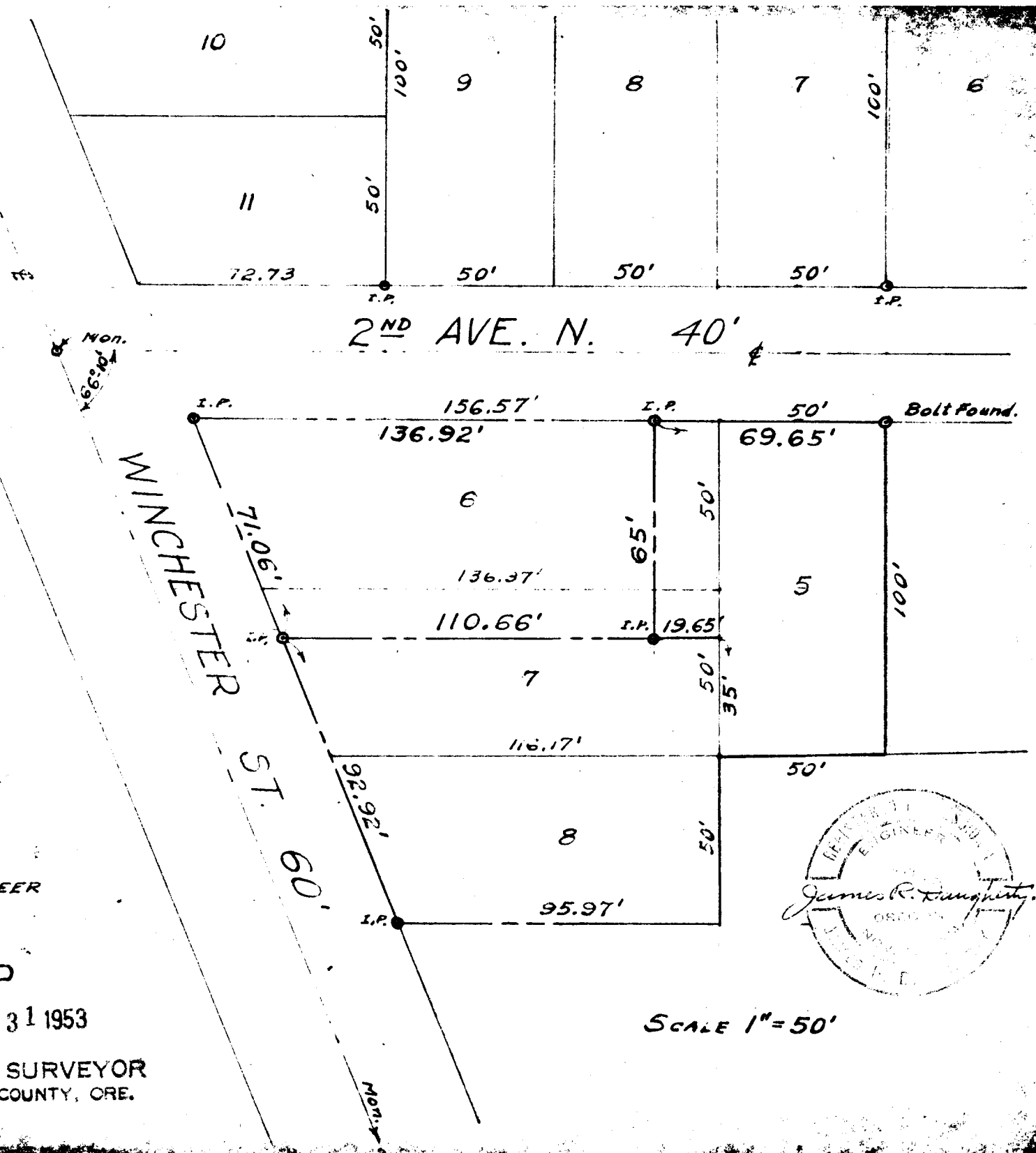
REPLAT
B.F. CHILSEN LOTS
NOS. 5, 6, 7 & 8
BLOCK 77 - KINNEY'S ADD.
ROSEBURG, ORE.

SURVEYED & PLATTED BY
JAMES R. DAUGHERTY,
CIVIL SANITARY ENGINEER
REGISTERED PROFESSIONAL ENGINEER
ROSEBURG, ORE.

FILED
RECEIVED

OCT 31 1953

COUNTY SURVEYOR
DOUGLAS COUNTY, ORE.



SCALE 1" = 50'

James R. Daugherty