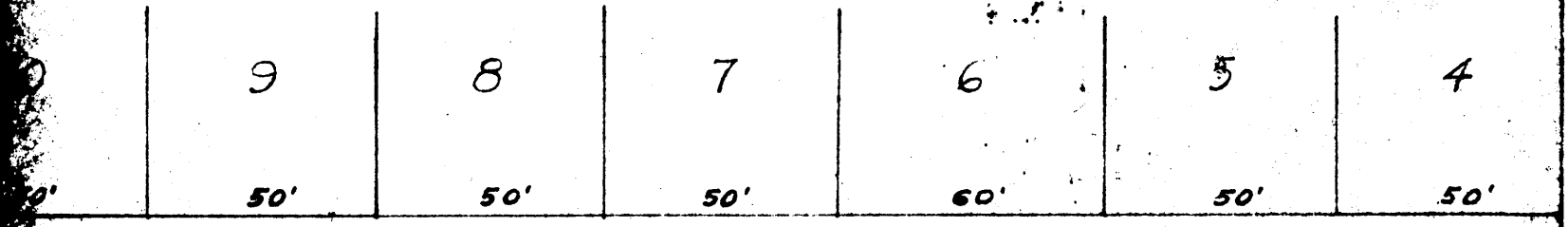
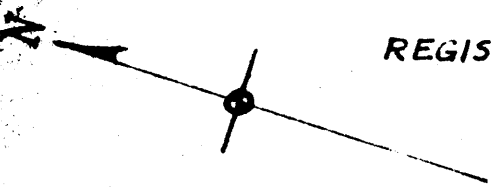


MAP OF SUBDIVISION SURVEY
 LOTS 1, 2 & 3 - BLOCK 14
 JONES ADDITION - ROSEBURG

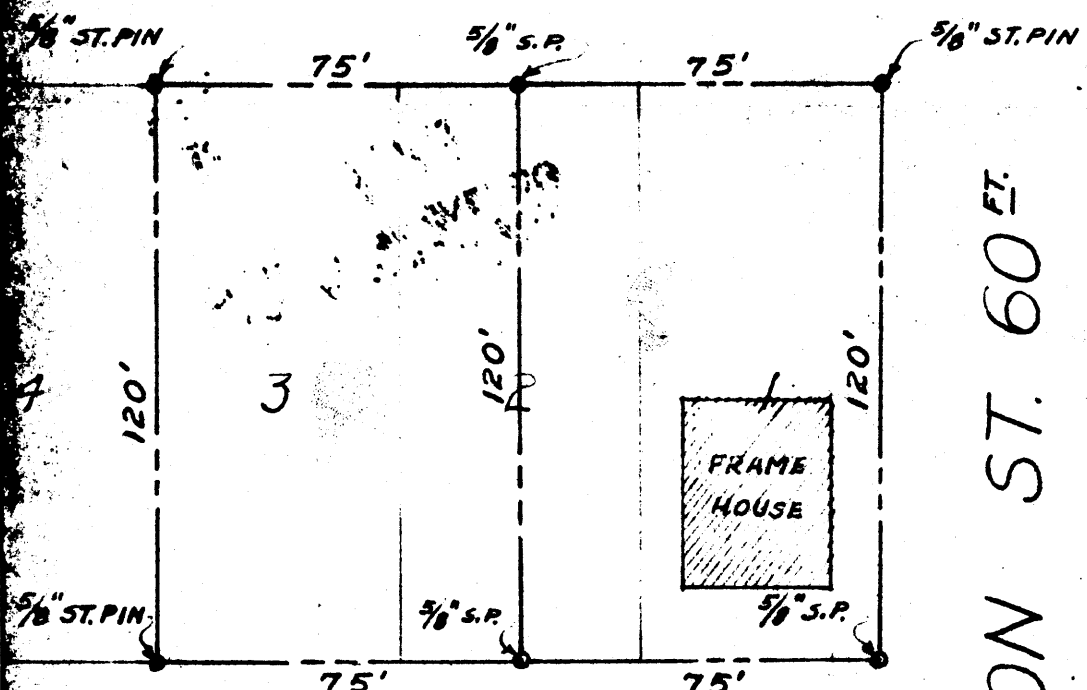
Surveyed & Platted By
JAMES R. DAUGHERTY
 Civil-Sanitary Engineer
 REGISTERED PROFESSIONAL ENGINEER
 ROSEBURG - OREGON

COUNTY SURVEYORS FILE DA
 DO NOT REMOVE FROM OFFI

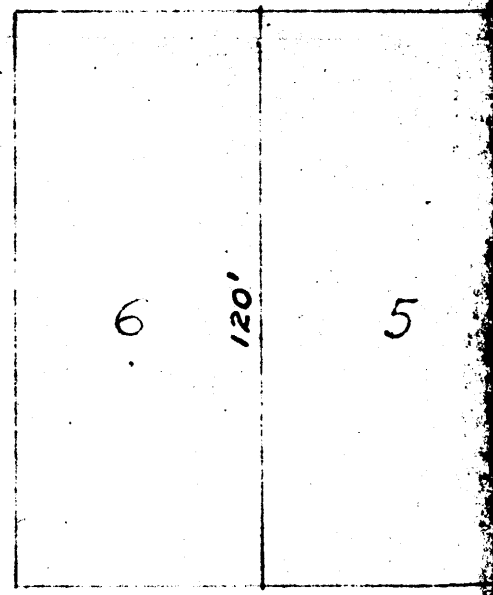
FILED
 RECEIVED
 OCT 31 1953
 COUNTY SURVEYOR
 DOUGLAS COUNTY, ORE.



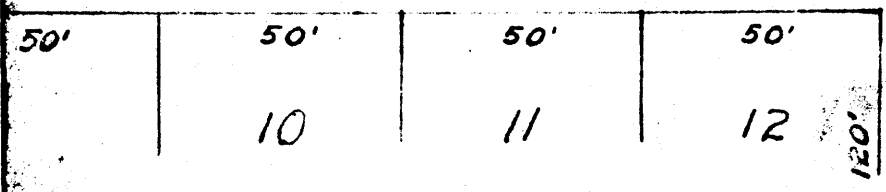
2ND AVE. 50 FT.



DIXON ST. 60 FT.

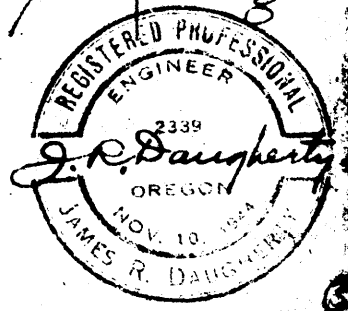


ALLEY



SCALE 1" = 40'

June 4, '48.



P. e. s. 41/201