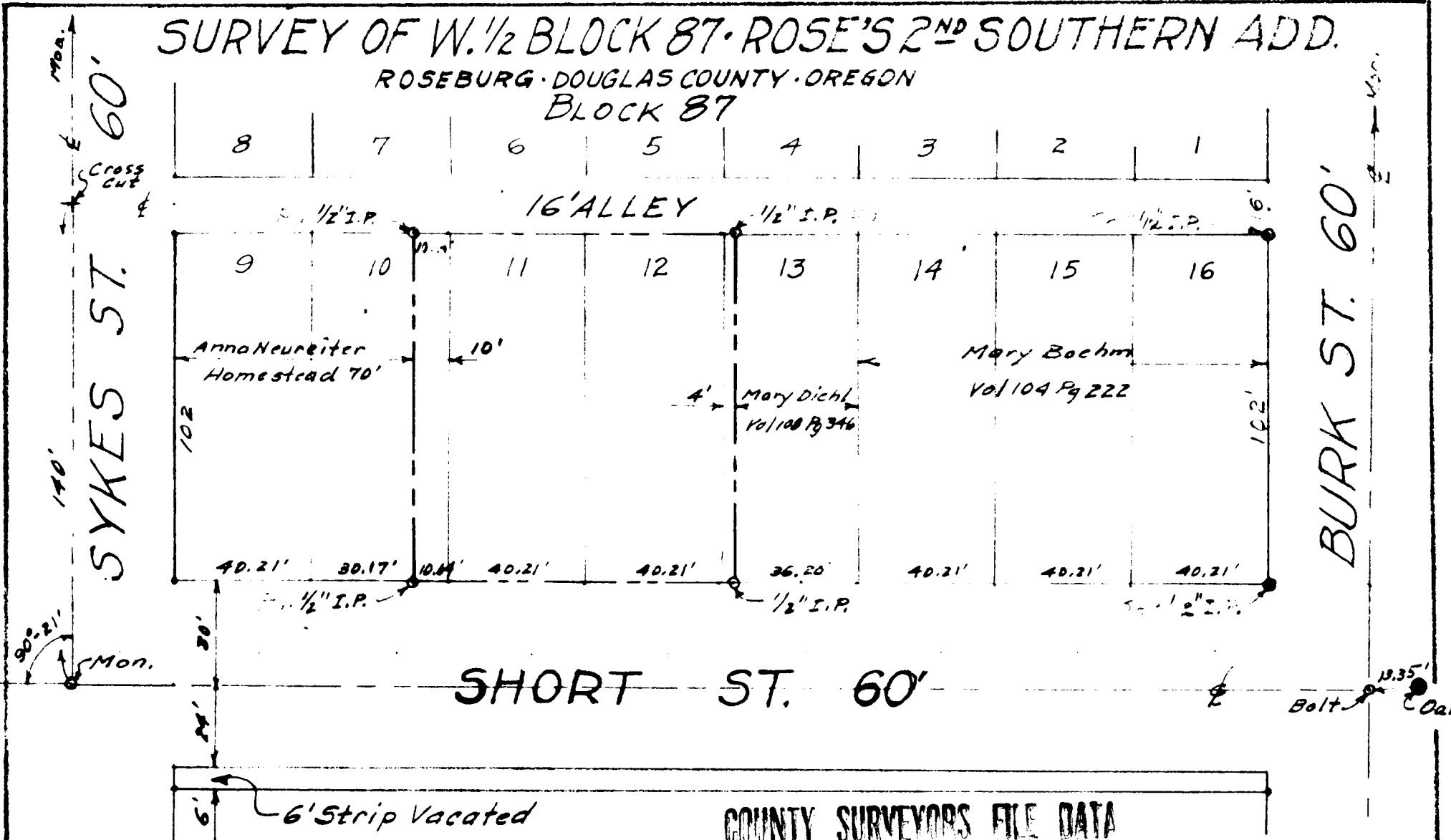
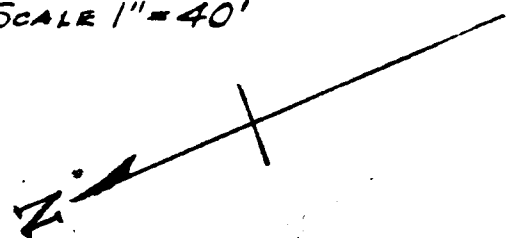


SURVEY OF W. 1/2 BLOCK 87 - ROSE'S 2ND SOUTHERN ADD.
 ROSEBURG - DOUGLAS COUNTY - OREGON
 BLOCK 87



SCALE 1" = 40'



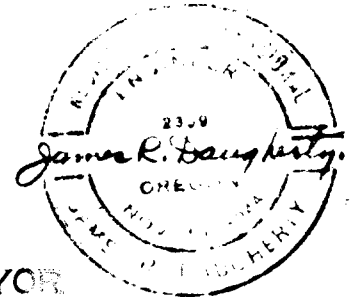
COUNTY SURVEYORS FILE DATA
 DO NOT REMOVE FROM OFFICE

JAMES R. DAUGHERTY
 CIVIL - SANITARY ENGINEER
 ROSEBURG - ORE.

FILED *LL*
 RECEIVED

SEP 4 1964

COUNTY SURVEYOR
 DOUGLAS COUNTY, ORE.



Sept. 1952
 Rev. Aug. 31, 1964

ORIGINAL MAP

File No. 41/199-2