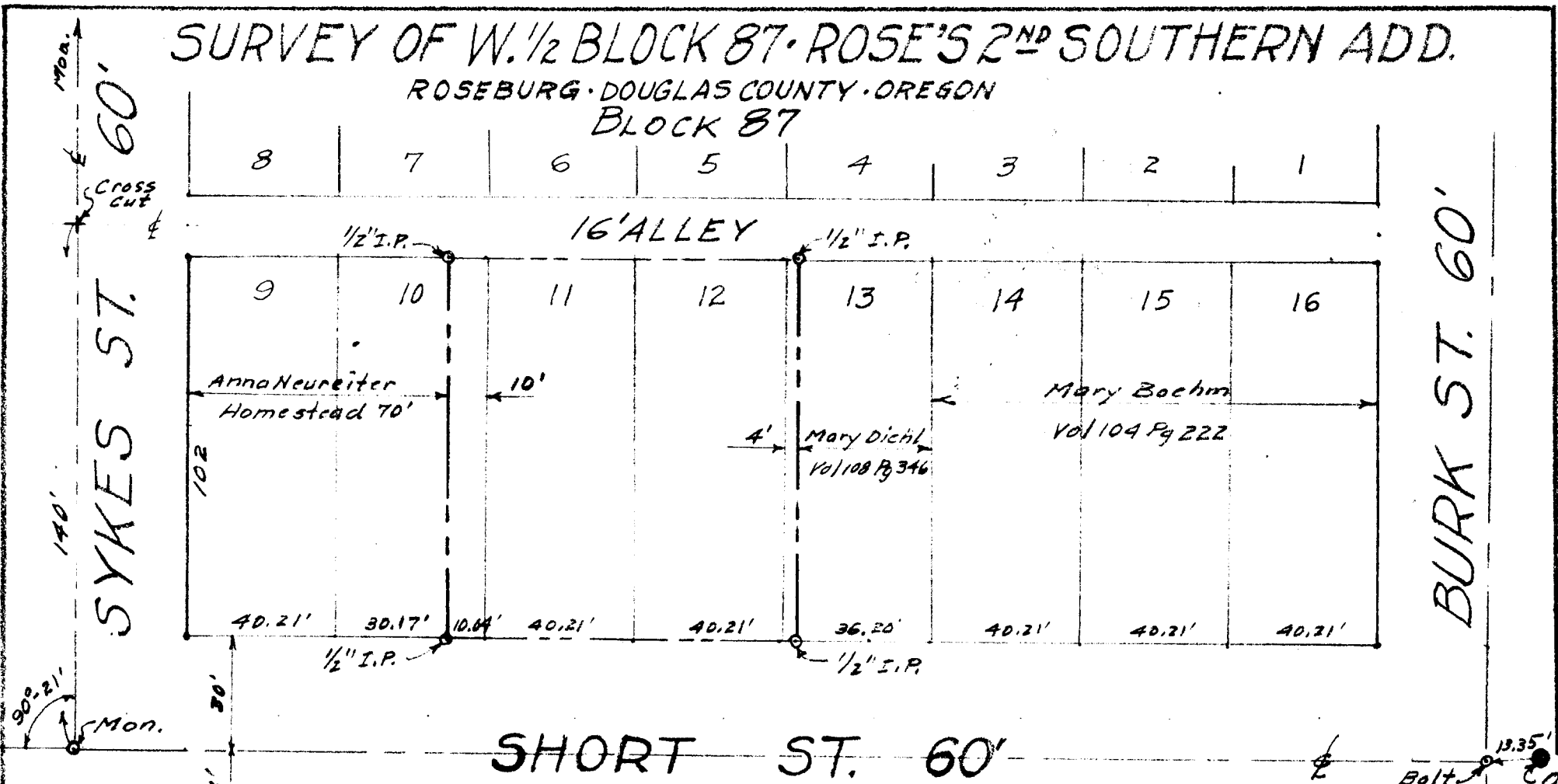


SURVEY OF W. 1/2 BLOCK 87 - ROSE'S 2ND SOUTHERN ADD.

ROSEBURG - DOUGLAS COUNTY - OREGON
BLOCK 87

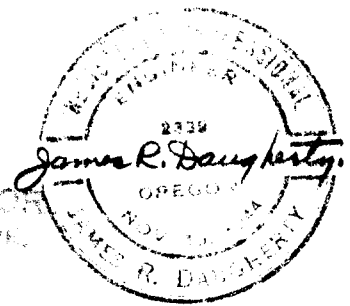


6' Strip Vacated

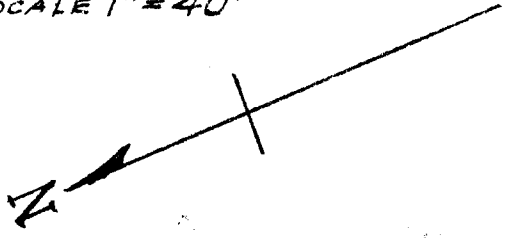
COUNTY SURVEYORS FILE DATA
NO NOT DEGREE FROM RECEIVED
JAMES R. DAUGHERTY RECEIVED
CIVIL - SANITARY ENGINEER
ROSEBURG - ORE.

OCT 8 1952

COUNTY SURVEYOR
DOUGLAS COUNTY, ORE.



SCALE 1" = 40'



Sept. 1952