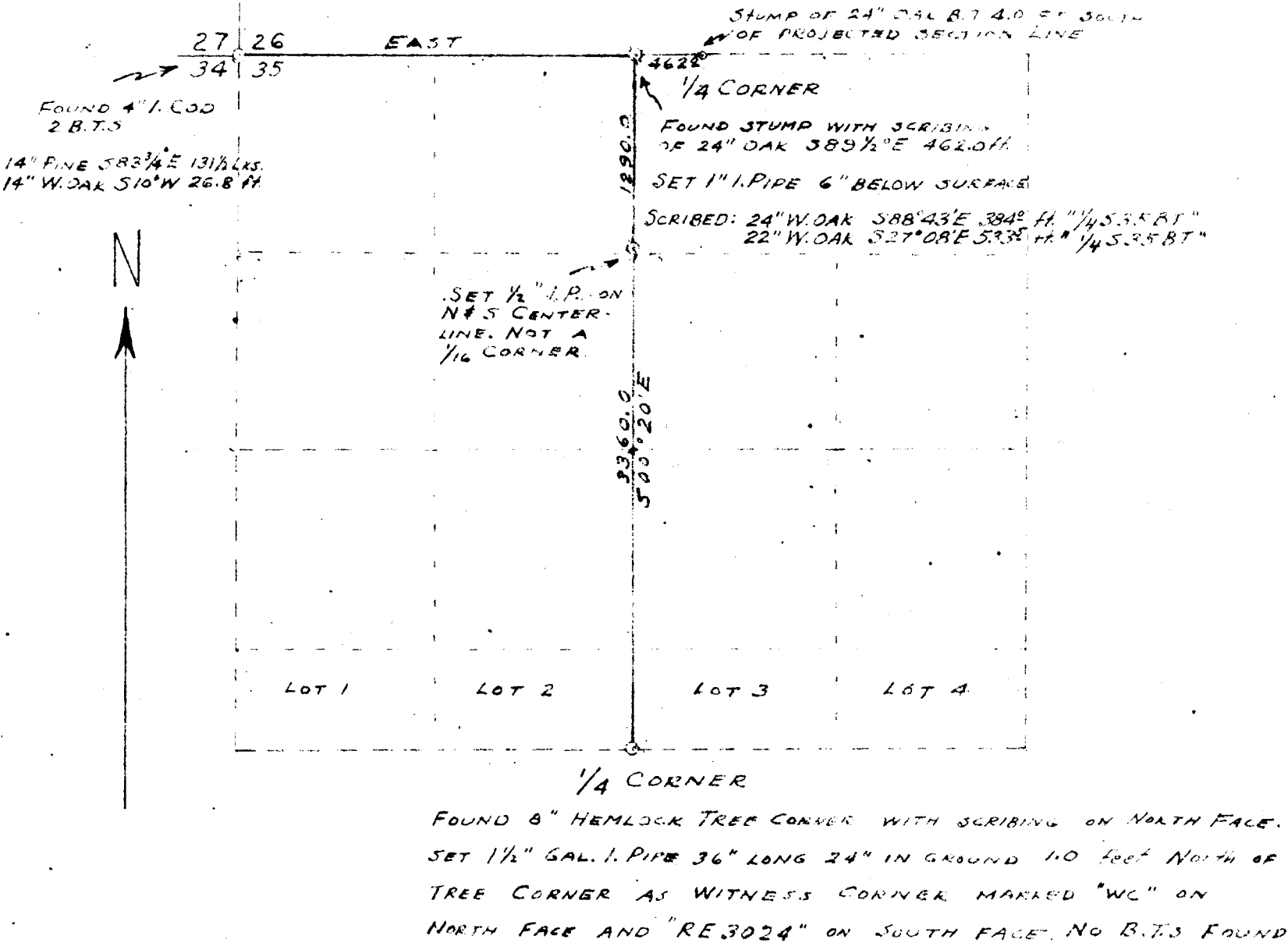


SURVEY OF PORTION OF SECTION 35
T. 30 S., R. 3 W., WM. MER.
FOR
M. I. L. O. CHURCH SCHOOL
 SCALE: 1"=1000' OCTOBER 1, 1953



1/4 CORNER
 FOUND 8" HEMLOCK TREE CORNER WITH SCRIBING ON NORTH FACE.
 SET 1 1/2" GAL. I. PIPE 36" LONG 24" IN GROUND 10 FEET NORTH OF
 TREE CORNER AS WITNESS CORNER MARKED "WC" ON
 NORTH FACE AND "RE 3024" ON SOUTH FACE. NO B.T.S. FOUND.

SCRIBED:
 28" CEDAR 533°E 37.2 FT. "1/4 S 2 BT RE 3024"
 18" HEMLOCK N30°W 40.1 FT. "1/4 S 3.5 FT"

FILE COPY
 NOT TO BE SOLD

COUNTY SURVEYORS FILE DATA
DO NOT REMOVE FROM OFFICE

RICHARD L. TEMPLIN, JR.
 REGISTERED LOGGING ENGINEER
 1004 N. W. HAWTHORNE
 GRANTS PASS, OREGON

FILED
RECEIVED

OCT 16 1953

COUNTY SURVEYOR
DOUGLAS COUNTY, ORE.



RICHARD L. TEMPLIN, JR.
REGISTERED LOGGING ENGINEER

October 1, 1953

Reestablishment of Quarter Corner between Sections 26 and 35, T30 S., R. 3 W., WM and Establishment of portion of east line of $N\frac{1}{2}$ of $NW\frac{1}{4}$ of Section 35, T. 30 S., R. 3 W., WM.

Surveyed for Oregon Conference of Seventh Day Adventists at Milo, Oregon.

At the Quarter Corner common to Sections 26 and 35, T.30 S., R. 3 W., WM., I find a stump of the original bearing tree which was a 24" Oak, ascertained by an excellent scribed "BT" and negative. As this stump was described as being $S 89\frac{1}{2}^{\circ} E$ and 462.0 feet distant from the original corner, I set a flag 4.0 feet directly north of the center of the stump.

I then proceed to the section corner common to sections 26, 27, 34, and 35 which is a 4" iron rod flush with the top of the ground from which the following bearing trees were found:

14 " Pine $S 83^{\circ}45' E$ -131.5 links
14" W. Oak $S 10^{\circ} W$ 26.8 feet.

Setting a flag over the true corner I range the transit in until the instrument is on a true line between the two flags. I then set a 1 inch iron pipe six inches under the surface of the ground on the true line and 462 feet distant from the oak stump. I then scribe the following bearing trees:

24" White Oak $S 88^{\circ}43' E$ 384.0 feet marked $\frac{1}{4}S35BT$
22" White Oak $S 27^{\circ}08' E$ 533.5 feet marked $\frac{1}{4}S35BT$

I then run due South and fall 27.9 feet west of the south quarter corner which is an 8" Hemlock marked " $\frac{1}{2}S$ " on north face, said corner being 4650.0 feet south of the north quarter corner. As none of bearing trees are left at the south quarter corner of section 35, I scribe the following bearing trees.:

28" Cedar $S 33^{\circ} E$ 37.2 feet marked $\frac{1}{4}S2BTRE3024$
18" Hemlock $N 30^{\circ} W$ 40.1 feet marked $\frac{1}{4}S35BT$.

I also set a $1\frac{1}{2}$ " iron pipe as a witness corner 1.0 feet north of the true corner marked "WC" on north face and "RE 3024" on south face.

Returning to the north Quarter Corner I run $S 00^{\circ}20' E$ on the true centerline and set a $\frac{1}{2}$ inch iron pipe 1290 feet south on the line to mark the course of the centerline only.

FILED
RECEIVED

OCT 16 1953

COUNTY SURVEYOR
DOUGLAS COUNTY, ORE.



C.S. 41/196b