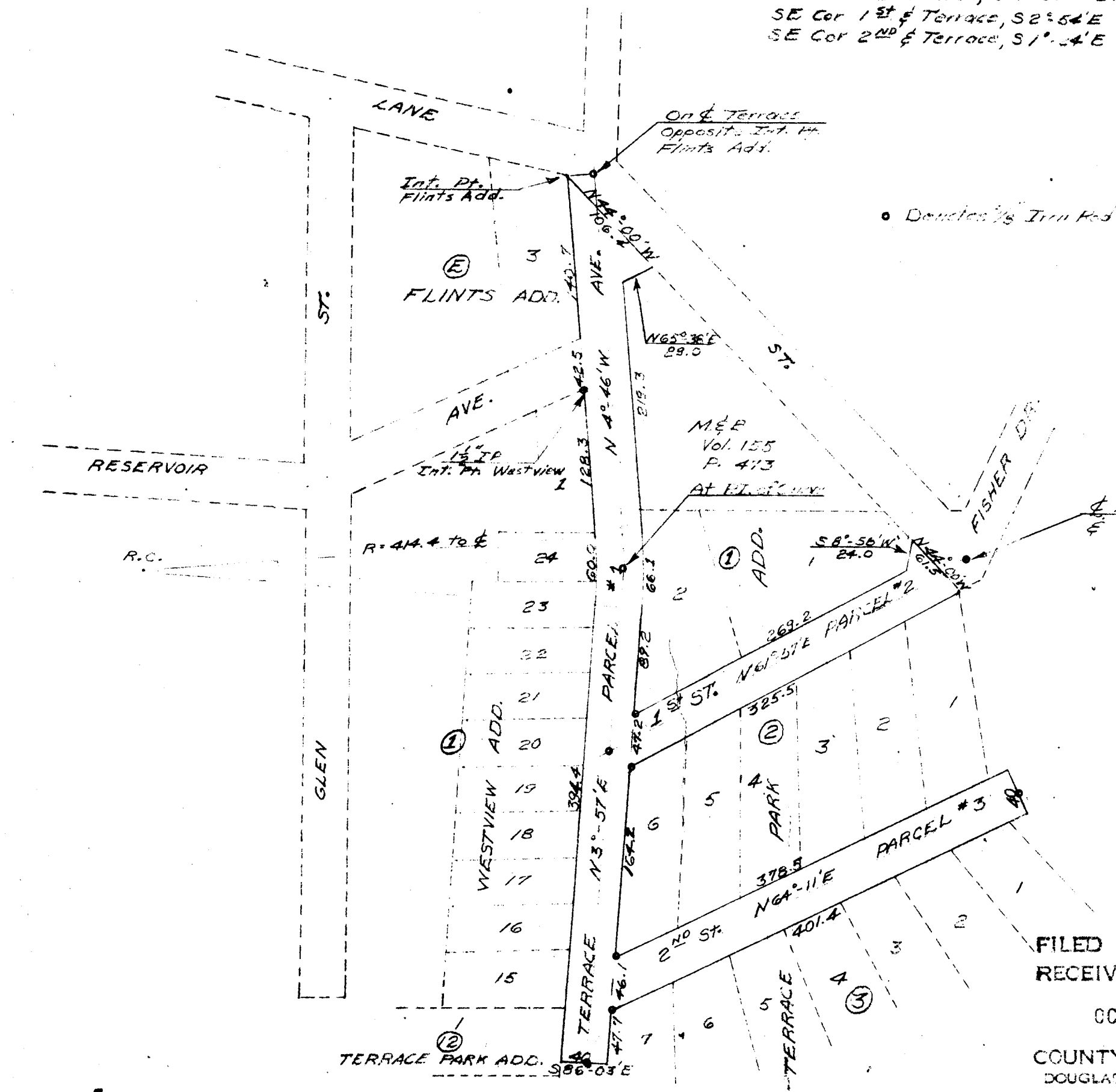


SE Ext. Cor. A Rose  
 DLC # 39  
 T27S R5W, WM

SE Cor DLC # 39 to:  
 Int Pt. Flints Add, S 4° 33' W 240.2'  
 SE Cor 1<sup>st</sup> & Terrace, S 2° 54' E 749.7'  
 SE Cor 2<sup>nd</sup> & Terrace, S 1° 54' E 958.8'

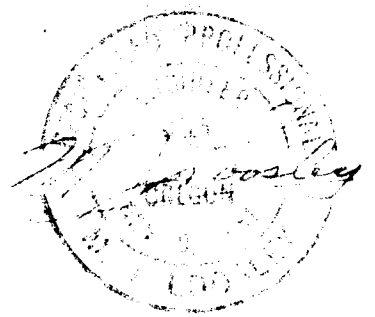
COUNTY SURVEYORS FILE DATA  
 DO NOT REMOVE FROM OFFICE



CITY OF ROSEBURG  
 ESTABLISHMENT OF R/W  
 TERRACE PARK ADD.  
 Scale - 1" = 100' Mar 1953

FILED  
 RECEIVED

MAR 11 1953  
 COUNTY SURVEYOR  
 DOUGLAS COUNTY, ORE.



4/1953