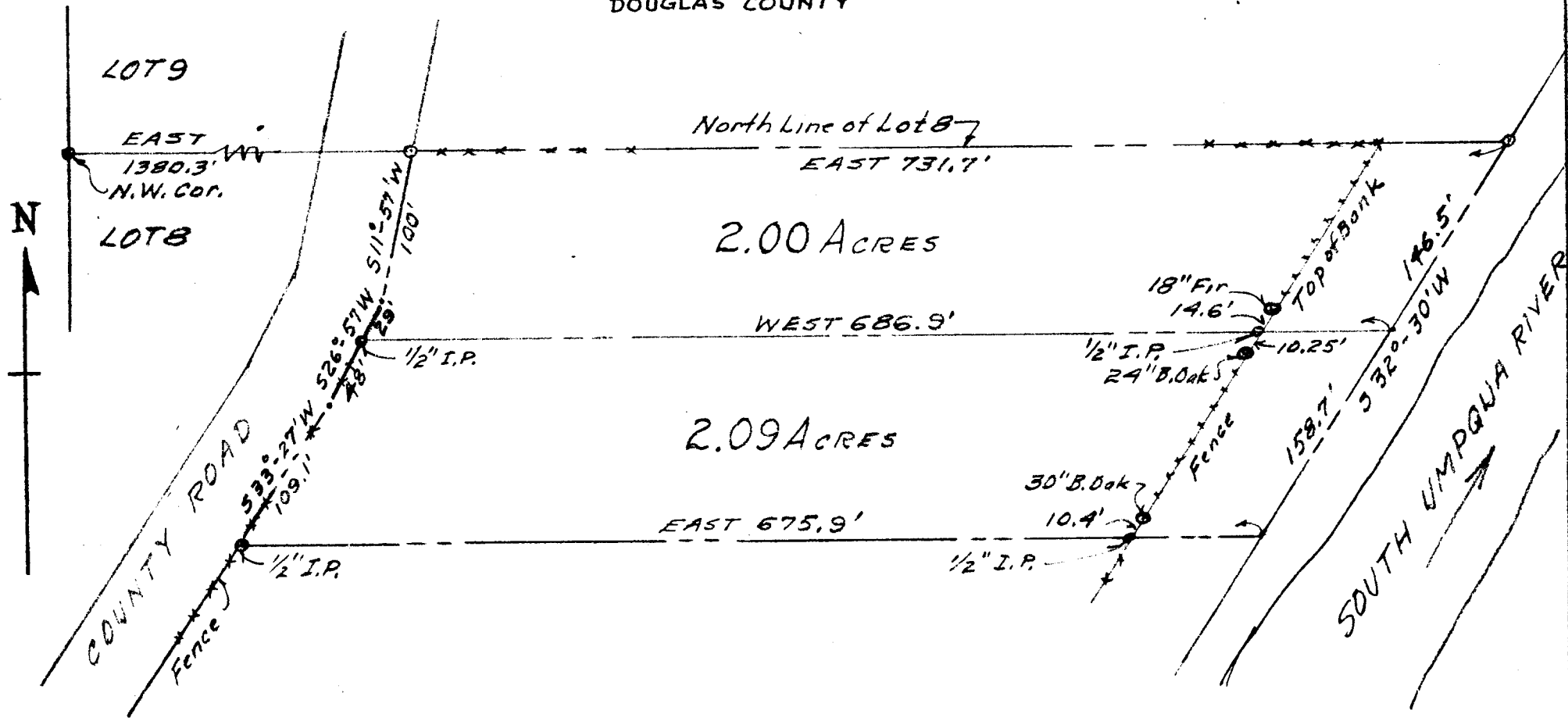


MAP OF SURVEY
 PARCELS IN LOT 8 - ARCHAMBEALL ESTATE - MELROSE - OREGON
 VOL. 35 - PG 357 - DEED RECORDS
 DOUGLAS COUNTY



Surveyed & Platted By
JAMES R. DAUGHERTY
 CIVIL-SANITARY ENGINEER

ROSEBURG, ORE.



Scale 1" = 100'

Aug. 1952

E.R. Fern, Melrose, Ore.

FILED
 AUG 15 1952
 COUNTY SURVEYOR
 DOUGLAS COUNTY, ORE.

COUNTY SURVEYORS FILE DATA
 DO NOT REMOVE FROM OFFICE