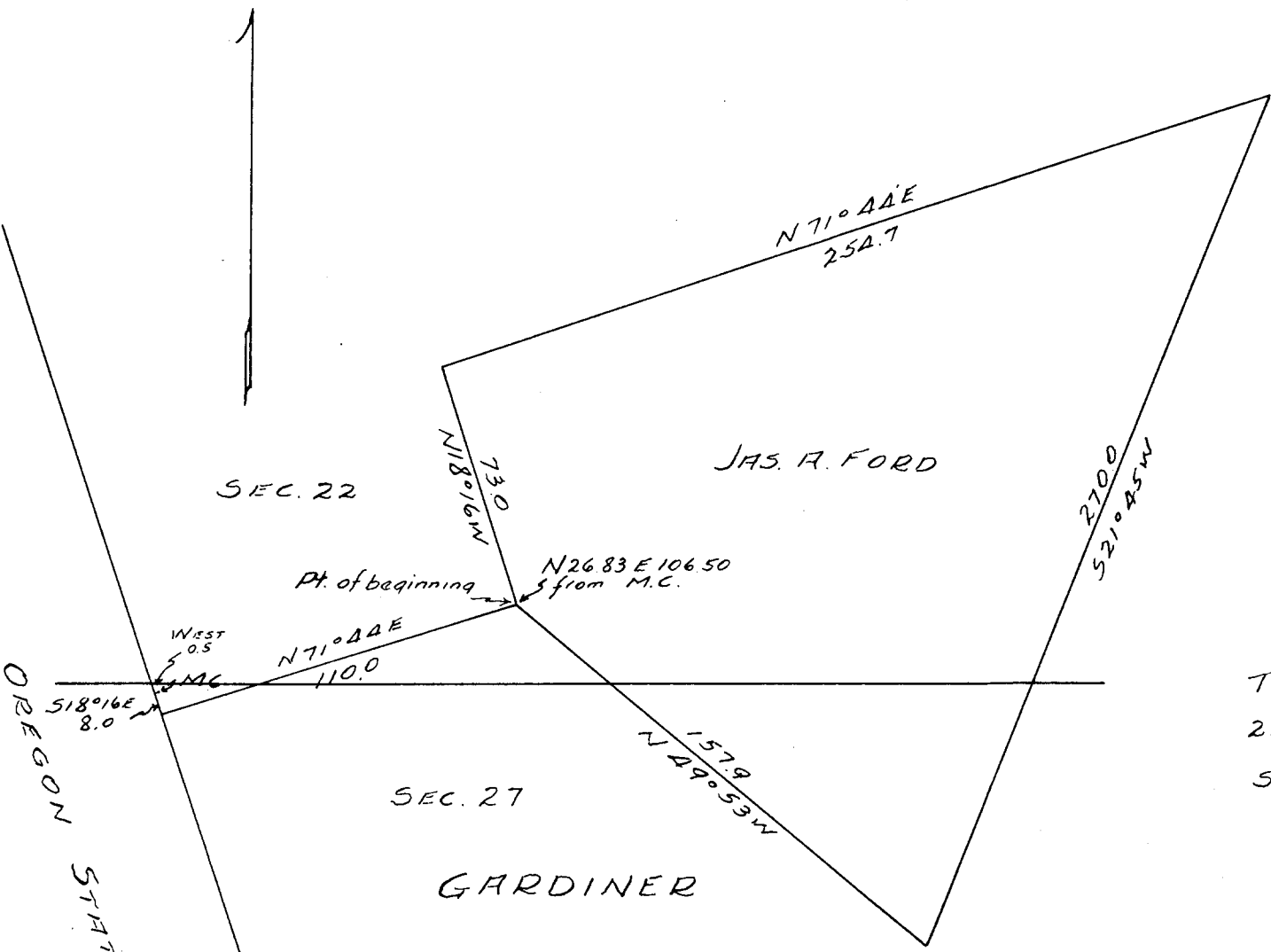


R. 12 W

N



SEC. 22

JAS. A. FORD

Pt. of beginning

N 26.83 E 106.50
from M.C.

WEST
0.5

N 71° 44' E
110.0

S 18° 16' E
8.0

SEC. 27

N 49° 53' W
157.9

N 71° 44' E
254.7

GARDINER

T.
21
S.

JAS. A. FORD

CITY OF GARDINER

DOUGLAS COUNTY

Scale 1" = 50' June 1953.

FILED
RECEIVED

JUL 22 1953

COUNTY SURVEYOR
DOUGLAS COUNTY, ORE.

Wm. J. Braxton

COUNTY SURVEYORS FILE DATA
DO NOT REMOVE FROM OFFICE

CS 41/180