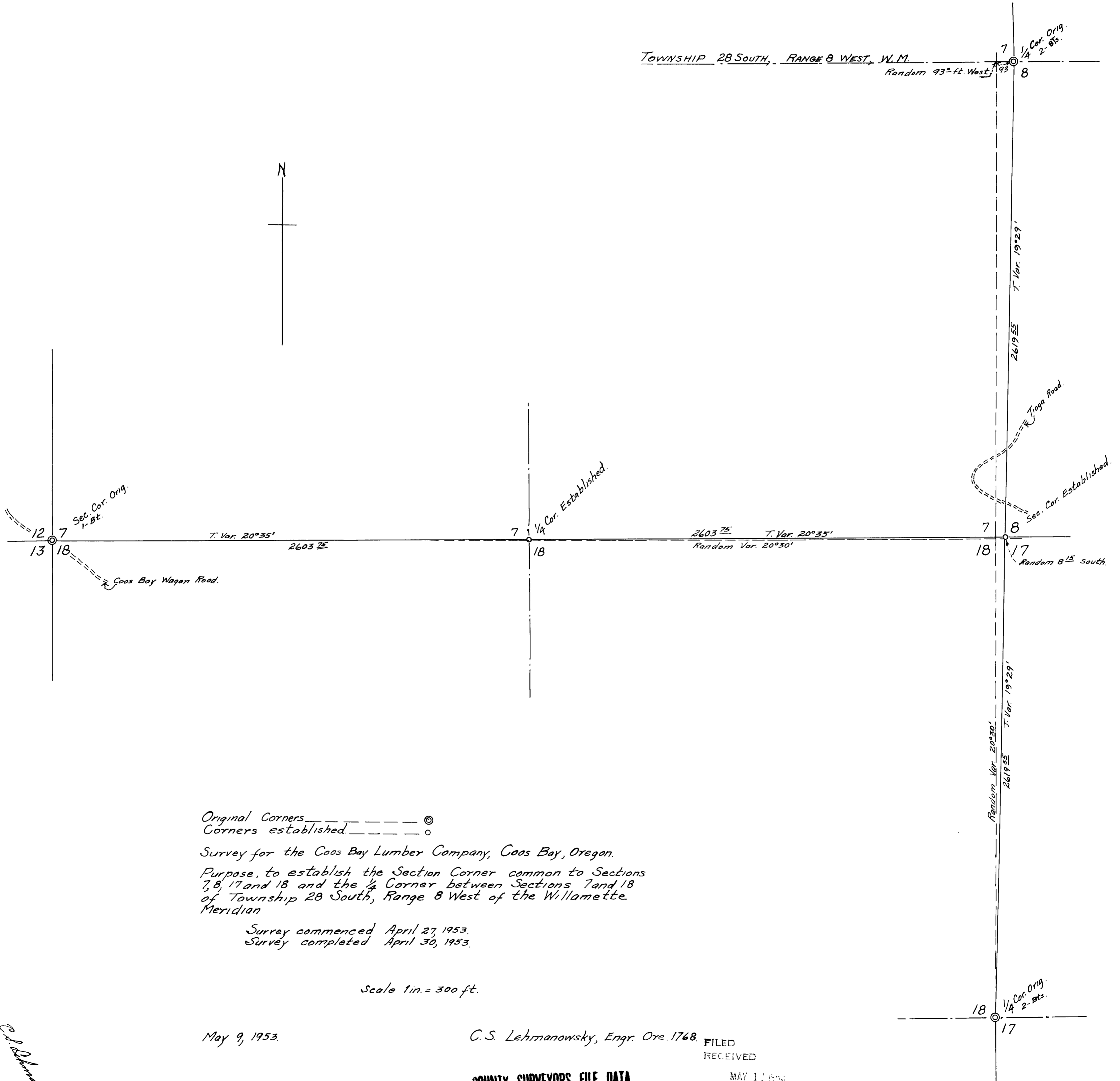


TOWNSHIP 28 SOUTH, RANGE 8 WEST, W.M.

Random 93° ft. West

1/4 Cor. Orig.
2-Bts.



Original Corners ———— ©
Corners established ———— ○

Survey for the Coos Bay Lumber Company, Coos Bay, Oregon.

Purpose, to establish the Section Corner common to Sections 7, 8, 17 and 18 and the 1/4 Corner between Sections 7 and 18 of Township 28 South, Range 8 West of the Willamette Meridian

Survey commenced April 27, 1953.
Survey completed April 30, 1953.

Scale 1 in. = 300 ft.

May 9, 1953.

C. S. Lehmanowsky, Engr. Ore. 1768.

C. S. Lehmanowsky

FILED
RECEIVED

MAY 10 1953

COUNTY SURVEYOR
DOUGLAS COUNTY, ORE.

COUNTY SURVEYORS FILE DATA
DO NOT REMOVE FROM OFFICE

SURVEY
for the
COOS BAY LUMBER COMPANY
COOS BAY, OREGON

Purpose to establish the Section Corner common to Sections 7, 8, 17 and 18 and the 1/4 Corner between Sections 7 and 18 of Township 28 South, Range 8 West of the Willamette Meridian.

Survey By C. S. Lehmanowsky. Ore. 1768
Survey commenced April 27, 1953
Survey completed April 30, 1953

I commence at the Section corner common to Sections 12 and 13 of Township 28 South, Range 9 West, W.M. and Sections 7 and 18 of Township 28 South, Range 8 West, W.M. I set stake for this corner from a 60-inch fir which bears N35°00'E 14 links dist., the only bearing tree of the original four trees marked. I mark a 60-inch fir, S27°15'W, 43.30 feet dist. for new bearing tree for this corner.

Thence I run east on a random line between Sections 7 and 18, Var. 20°30' a distance of 39.80 chains and found no trace of the original 1/4 corner. Thence I continued East a total distance of 76.60 chains and at this point after diligent search found no evidence of the Section corner common to Sections 7, 8, 17 and 18, of said Township and Range, due to fire all evidence of this corner was destroyed.

Thence I go to the 1/4 corner between Sections 17 and 18 of said Township and Range which is the original corner, the two bearing trees described in the original survey remain standing. I ran north from this 1/4 corner on a random line Var. 20°30' a distance of 5,239.10 feet and intersect the east and west center line of Section 7 of said Township and Range 93.0 feet west of the 1/4 corner between Sections 7 and 8 which is a Hemlock tree with two Hemlocks for bearing trees as described in the original survey. As the original survey calls for 40.00 chains between both of the 1/4 corners, I set a stake on a true line (Var. 19°29') and equidistant between the 1/4 corners for the Section Corner common to Section 7, 8, 17 and 18 from which I marked:


A Fir 24 inches, S78°30'W, 25.30 feet dist.
A Fir 24 inches, N78°00'W, 35.00 feet dist.
A Fir 24 inches, S41°30'E, 24.80 feet dist.
A Fir 22 inches, N44°30'E, 38.00 feet dist.

Thence I found that the random line between Section 7 and 18 intersected the east line of Section 13, 8.15 feet South of the section corner I established. Thence on a true line (Var. 20°35') and equidistant between the Section Corner of Sections 7 and 18 and the Section Corner common to Sections 7, 8, 17 and 18 of Township 28 South, Range 8 West, W.M. I establish the 1/4 Corner between Sections 7 and 18 which is a 3-inch square stake from which I marked a Fir 48 inches, N38°30'W, 5.30 feet dist. and a Fir 40 inches, S88°30'W, 24.70 feet dist. This 1/4 corner is on a precipitous slope facing South.

FILED
RECEIVED

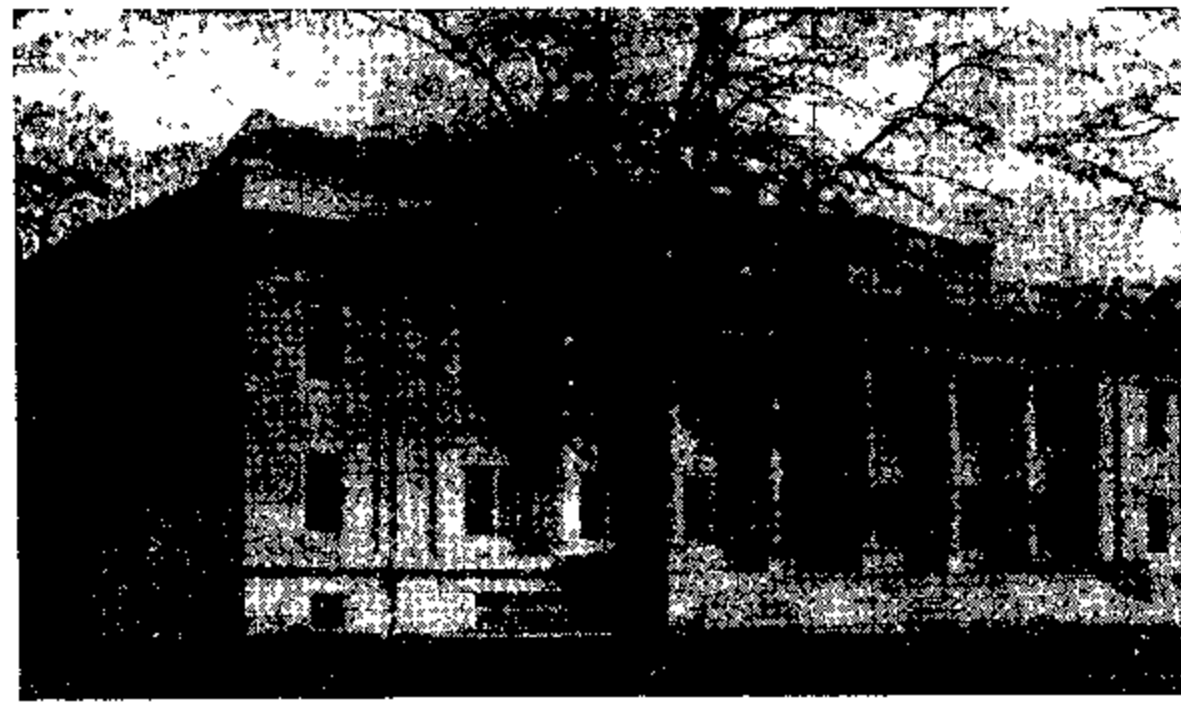
MAY 13 1953

COUNTY SURVEYOR
DOUGLAS COUNTY, ORE.


Engineer, Oregon 1768.

41/153 b

CHARLES DOERNER, CLERK AND RECORDER
NED DIXON, ASSESSOR
OLIVER L JOHNSON, TREASURER
BEN B IRVING, SURVEYOR
F C FREAR, BRIDGE ENGINEER
WALLY HECTOR, ROAD ENGINEER



ROBERT M. STULTS, DISTRICT ATTORNEY
KENNETH BARNEBURG, SCHOOL SUPT
C H BAIRD, SR, SHERIFF
AGNES M PITCHFORD, PROB OFFICER
E. J WAINSCOTT, HEALTH OFFICER
L L POWERS, CORONER

DOUGLAS COUNTY
ROSEBURG, OREGON

May 14, 1953

Mr. C. S. Lehmanowsky,
654 S 6th. St.
Myrtle Point, Oregon.

Dear Mr. Lehmanowsky:

We have received, for filing, the map and narrative report of a survey made by you for the Coos Bay Lumber Co. This has been filed under number 41-153.

In the examination of the map and report of this survey, we find certain procedures to which we take exception.

1- In determining the location of the corner to sections 7-8-17 and 18, you have placed it at the midpoint of a direct line between the $\frac{1}{4}$ sec. corners north and south. Referring to the "Manual of Surveying Instructions 1947" (prepared by the Bureau of Land Management) Chapter V. The corner in question should have been located by the method of "double proportional measurements" instead of "single proportional measurements" as employed by you.

2- The $\frac{1}{4}$ sec. corner 7-18 should be located by "single proportional measurement. I noticed that you have placed this corner midway between the section corners. This agrees with the original field notes as shown by our copy and you are probably correct in so doing. However I note that the government plat is lotted on the basis of the quarter corner being 39.60 chs. from the range line. While the 20 lks. is a minor discrepancy, I believe that a check with the Regional Engineer, Bureau of Land Management is warranted in this case, if the timber along the line is very valuable.

3- Your narrative report does not indicate your method of making the survey. I have presumed that you have used a staff compass and tape. The magnetic needle was discontinued by the government in the 1890s in favor of the solar compass and solar transit. The Oregon law provides that re-surveys to establish lost or obliterated government corners must be in accordance with the laws and regulations

of the government Land Office. I am fully aware that many engineers surveyors and cruisers are using the staff compass for all their work. The magnetic needle of a surveying compass was usually 8 in. long and in some cases up the 14 inc. long. These are much more accurate than the staff compass with its 3 or 3½ in. needle. In Douglas County we are plagued with a considerable amount of local attraction and many of those in the woods know nothing or care nothing about these conditions so cases of trespass are coming to light and some of the timber operators are finding themselves the target for damages for trespass. A recent re-survey of a township in this county, made by the Bureau of Land Management, showed a variation in the magnetic declination from approx. 11° min. to plus 37° max. I know that the coast area has less local attraction than other areas of the county.

Very truly yours,

BEN. B. IRVING
County Surveyor.

cc Coos Bay Lbr. Co.

COOS BAY LUMBER COMPANY

BOX 607
COQUILLE, OREGON

February 10, 1954

Mr. Ben B. Irving, County Surveyor
Douglas County Court House
Roseburg, Oregon

Dear Mr. Irving:

Please refer to survey report made by C. S. Lehmanowsky of the south boundary of Section 7, T28S. R8W.W.M. which is filed under No. 41-153 as reported by your letter dated May 14, 1953.

Enclosed find survey report showing a correction of this above survey.

In October a witness tree was found establishing the true quarter corner between Section 7 and 18, 28-8. The witness had been partially chopped out a year or two before the April survey by Lehmanowsky. The evidence of a B.T. was lost by this cutting. The individual who had made the original cutting on the witness returned to this area for the purpose of completing the cutting job on the tree and exposing the witness.

If you will check the original field notes you will note that the survey called for splitting the distance rather than throwing the error to the west.

Yours very truly,

COOS BAY LUMBER COMPANY



Wm. Ruhmann

WR/mc
Encl:

FILED
RECEIVED

FEB 13 1954

COUNTY SURVEYOR
DOUGLAS COUNTY, ORE.

41/153e