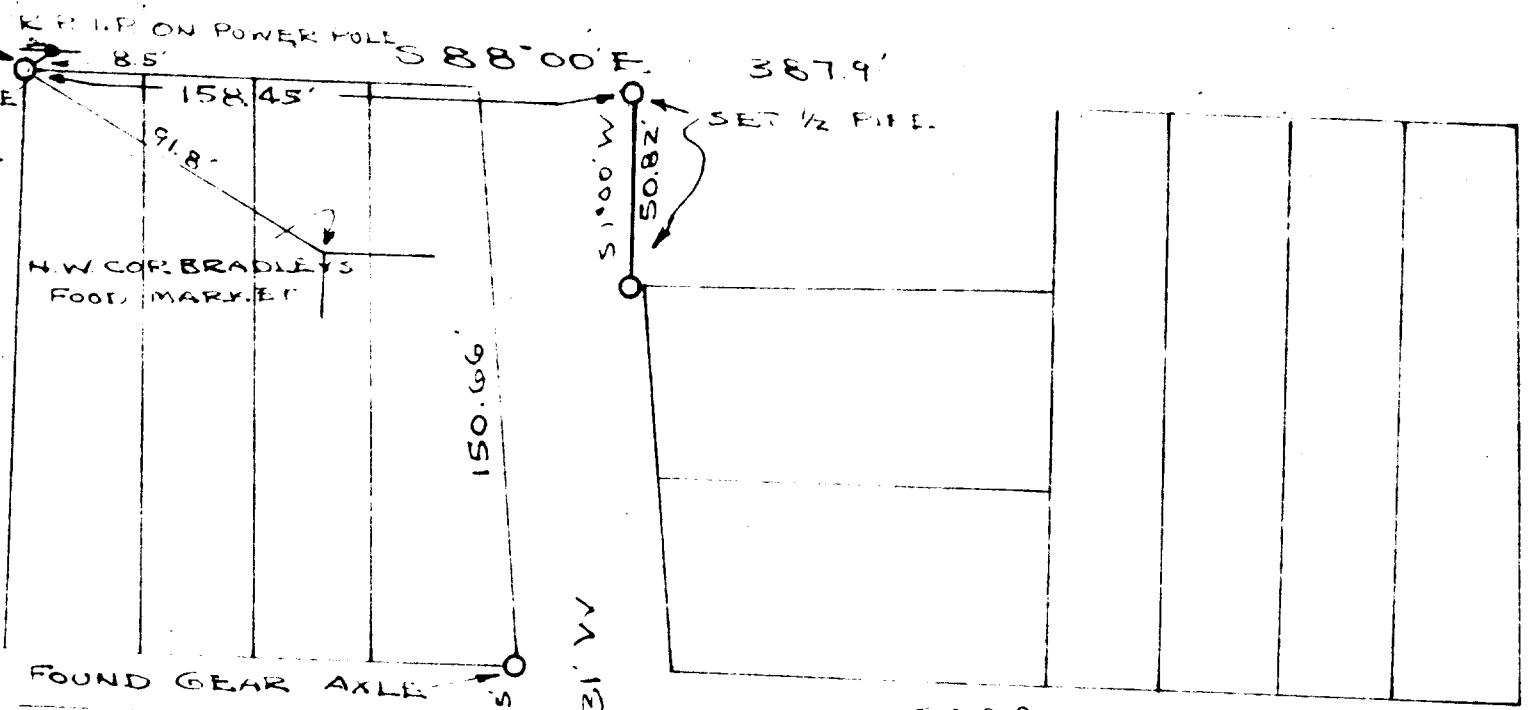


GARDEN VALLEY COUNTY ROAD 60

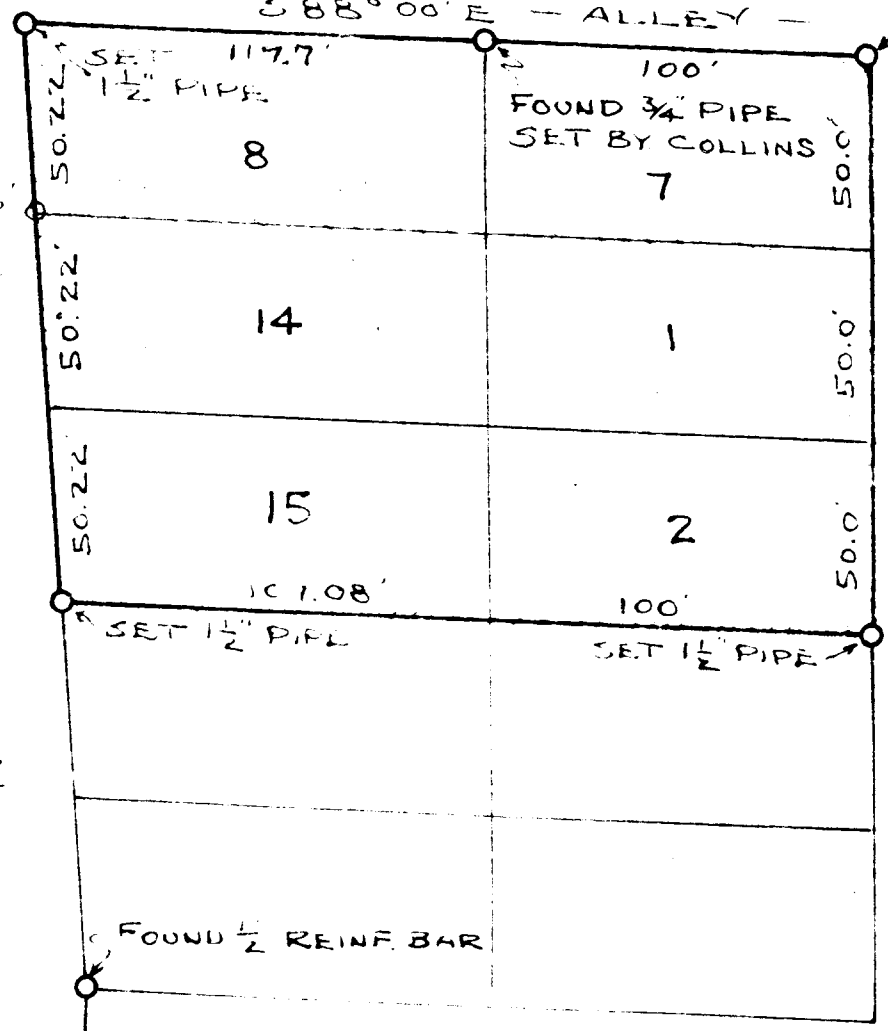
FOUND INITIAL POINT  
2" GAL. IRON PIPE  
2' UNDER ROAD SURFACE  
SET 2" X 24" GAL. IRON  
PIPE TO ROAD SURFACE



FOUND GEAR AXLE

FOUND ORIG. 3/4" PIPE

HIGHLAND ST. N 3° 31' W



88° 00' E - ALLEY -



FEB 27 1953

COUNTY SURVEYOR  
DOUGLAS COUNTY, ORE.

SURVEY OF LOTS 7, 8  
OF GADDIS PLAT A  
AND LOTS 1, 2, 14, 15 OF  
RESUBDIVISION OF GADDIS  
PLAT A, IN SEC. 13, T27S,  
R6 WWM, DOUGLAS CO. ORE.  
NOV. - 1952 SCALE 1"=50'

FEB 27 1953

COUNTY SURVEYOR  
DOUGLAS COUNTY, ORE.

COUNTY SURVEYORS FILE DATA  
DO NOT REMOVE FROM OFFICE

41-117