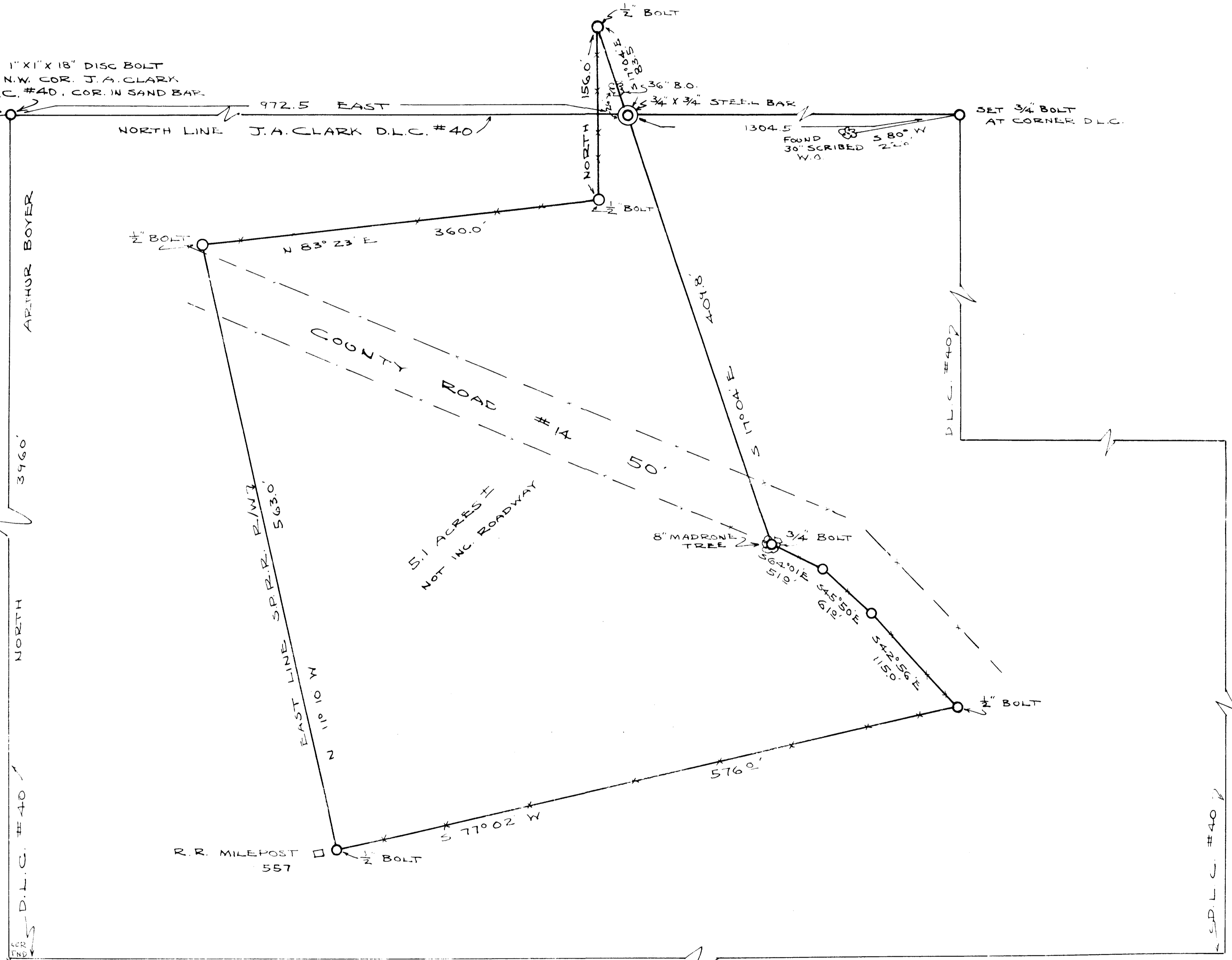


FOR WIT TREE MARKED
 24" BLACK OAK SCRIBED C40
 T 295. R 6 W. - 1581 B.M.
 TREE IS ON E. EDGE OF FIELD WHERE
 SLOPE STARTS TO RIVER &
 ABOUT 90' S. OF PHONE LINE.
 B.T. IS FARTHEST N. OF A
 LINE OF OAK TREES THAT FRINGE
 E. EDGE OF ALFAFA FIELD.
 WIT. TED SCHATTENKX
 ARTHUR WECK'S

SET 1" X 1" X 18" DISC BOLT
 FOR N.W. COR. J.A. CLARK
 D.L.C. #40. COR. IN SAND BAR.



FILED
 RECEIVED
 FEB 27 1953
 COUNTY SURVEYOR
 DOUGLAS COUNTY, OREGON

COUNTY SURVEYORS FILE DATA
 DO NOT REMOVE FROM OFFICE

ARTHUR WECK'S PROPERTY
 IN SEC. 1 & 2 T. 29 S., R 6 W. W.M.
 DOUGLAS COUNTY, OREGON
 FEB. 1953 - A. BOYER, ENGR - SCALE 1"=60'