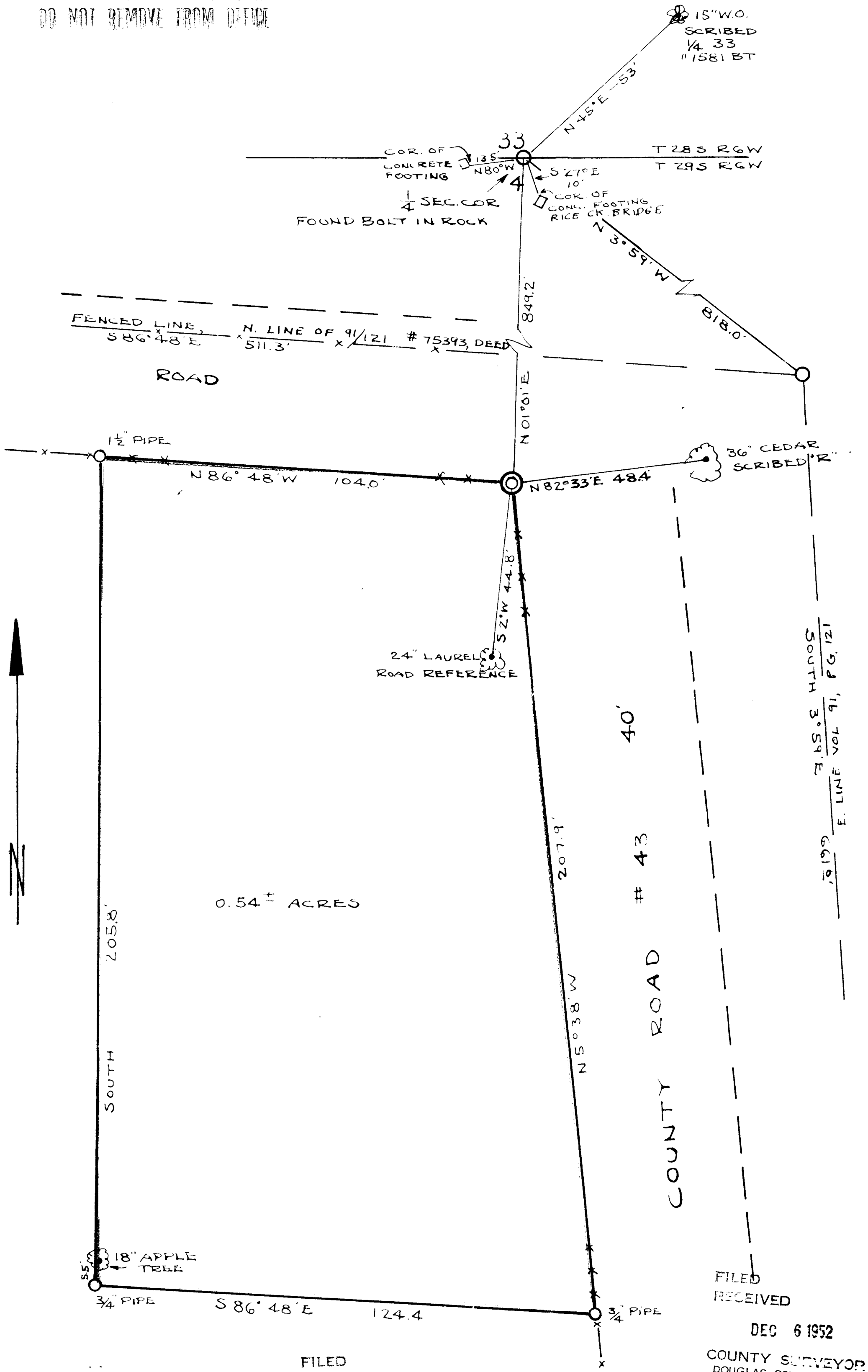


COUNTY SURVEYORS FILE DATA
DO NOT REMOVE FROM OFFICE



0.54 ± ACRES

43 COUNTY ROAD

F.B.S. & H.H.S. SOUTH
E. LINE VOL 91, P.G. 121

FILED RECEIVED
DEC 6 1952
COUNTY SURVEYOR
DOUGLAS COUNTY, MO.

FILED RECEIVED
DEC 6 1952
COUNTY SURVEYOR
DOUGLAS COUNTY, MO.

PORTION OF ROY T. RICE PROPERTY
IN THE N.E. 1/4 OF THE N.E. 1/4
SECTION 4, T 29 S, R 6 W, M. 111
OCT. - 1952
SCALE 1" = 20'