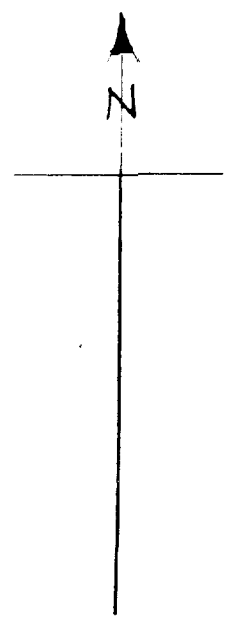
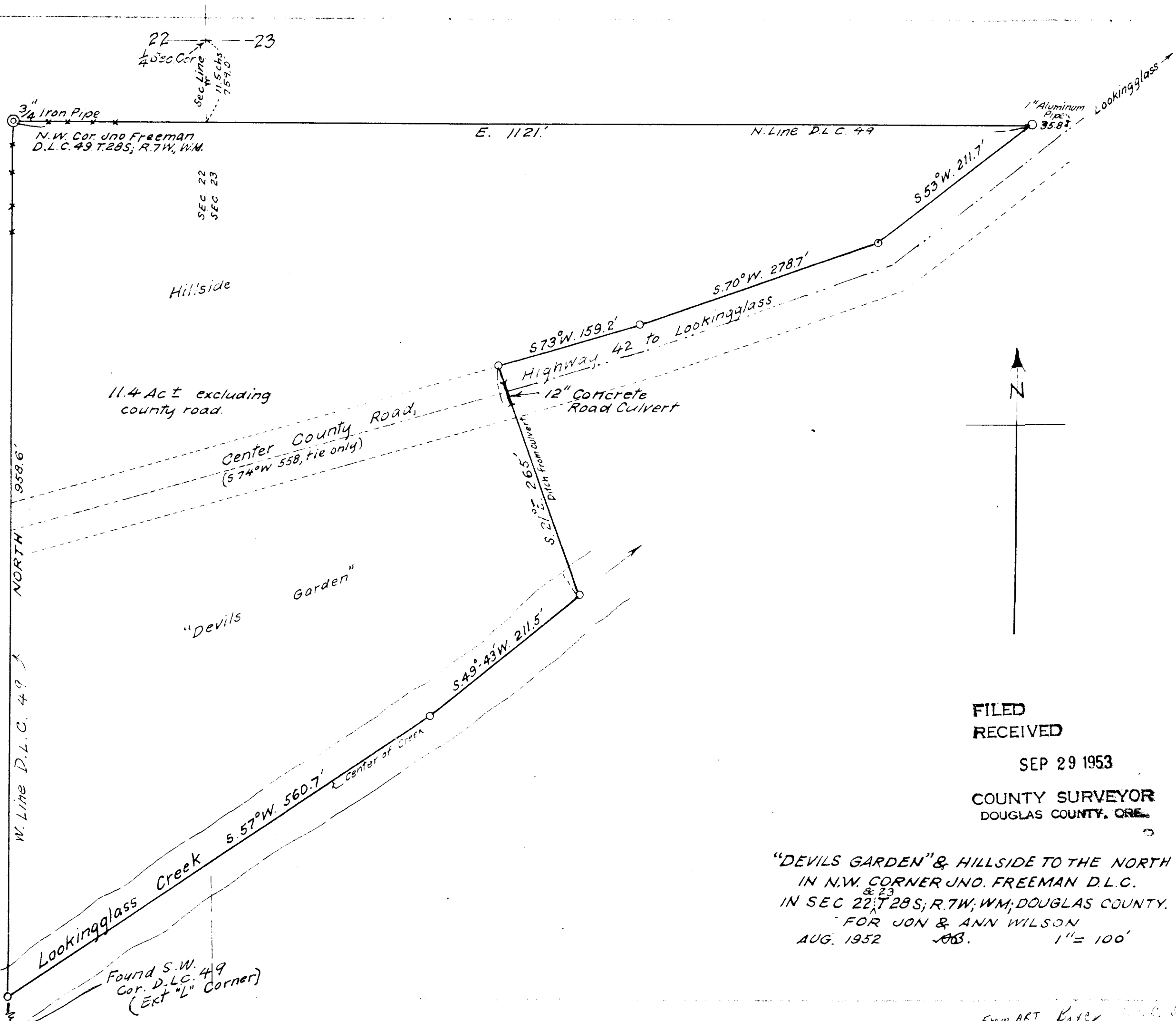


05.91/92
4/1/97



FILED
 RECEIVED
 SEP 29 1953
 COUNTY SURVEYOR
 DOUGLAS COUNTY, ORE.

"DEVILS GARDEN" & HILLSIDE TO THE NORTH
 IN N.W. CORNER JNO. FREEMAN D.L.C.
 IN SEC 22^{& 23} T28S; R.7W; WM; DOUGLAS COUNTY.
 FOR JON & ANN WILSON
 AUG. 1952 JAB. 1" = 100'

From ART Koster, County Surveyor