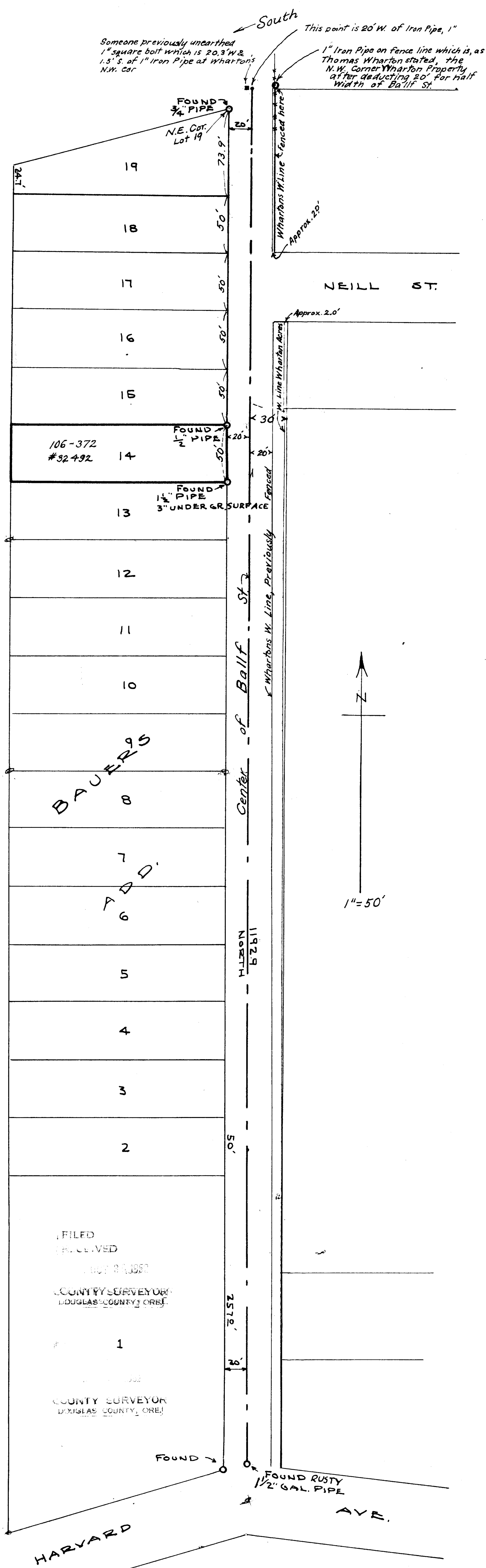


64/4 52

COUNTY SURVEYORS FILE DATA
DO NOT REMOVE FROM OFFICE

Umpqua River



BAUERS ADD.

FILED RECEIVED
COUNTY SURVEYOR
DOUGLAS COUNTY, ORE.
1
COUNTY SURVEYOR
DOUGLAS COUNTY, ORE.

KENNETH H. GAREY
LOT 14-BAUERS ADDITION
BALLIF ST. ROSEBURG, OREGON.
SEPT. 1952
1" = 50'

Handwritten signature