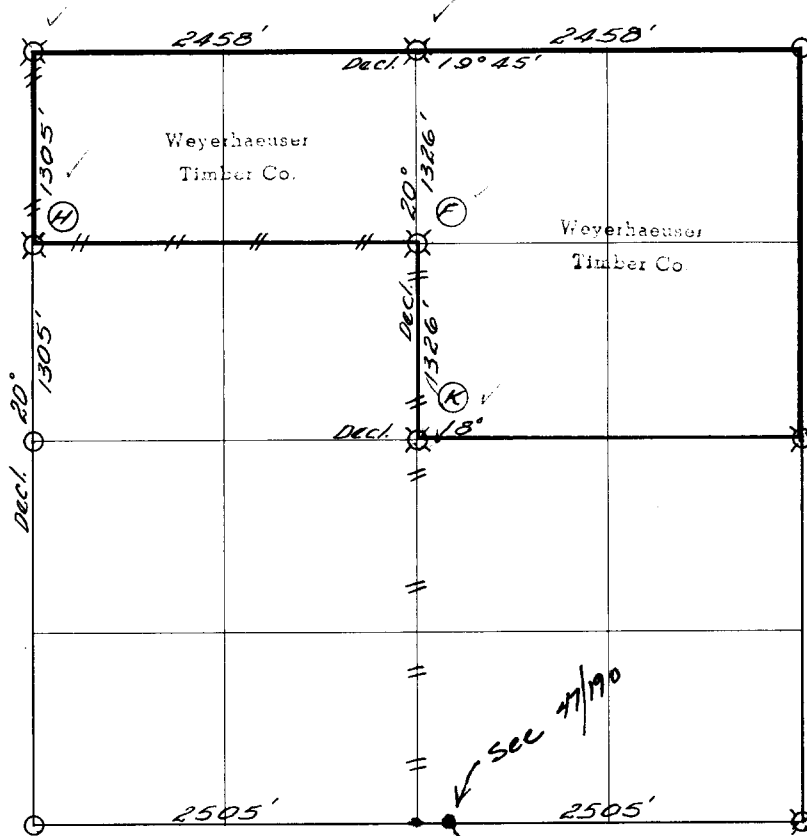


WEYERHAEUSER TIMBER COMPANY

Section 24

Township 26 S

Range 3 W



— // — // — Line marked by notch cut in blaze



Known corner



Referenced corner

ORIG CAR FOUND APPROX
200' E. FROM POINT SET BY THIS SURVEY

Staff compass and abney slope chain survey.

This subdivision was made by Weyerhaeuser Timber Company and Youngs Bay Lumber Company under the supervision of Lester Calder, Oregon Licensed Engineer, Registration No. 2149. William Semmler, Charles Stanfield for Youngs Bay Lumber Company and Curtis Price for Weyerhaeuser Timber Company, worked on the project.



This survey record consists of 5 sheets

Dates of survey 1950-51

Date filed for record & where Oct. 2, 1952

Distribution

Douglas County Surveyor's Office

Youngs Bay Lumber Co. (2)
Joelson Lumber Co.
Weyerhaeuser
O&C (2)

Reported October 1, 1952

By

Lester Calder

Weyerhaeuser Timber Company Corner Reference Method

as referred to below consists of a 4.7" x 5.7" aluminum plate with embossed Section plat nailed head high on the tree. Near base of tree a notch is cut and a square-headed nail with "W" on head driven through a hole in a 2½" brass disc stamped with the Oregon Registered Land Surveyor or Professional Engineer registration number.

o o o o o o o o o o o o o

13|18
24|19

Corner common to Sections 18 and 19-26S-2W
Sections 13 and 24-26S-3W

Found stone with 3 notches on the North and 3 notches on the South sides and 4 BTs. The NW one has been broken off leaving a 5' stub. The SW BT is a snag. The NE and NW BTs are in evidence.

13
24

¼ Corner common to Sections 13 and 24

Found no evidence of original corner. The spot has been covered by an old burn.

By single proportionate method set 3" square yew post for corner.

Referenced by Curtis Price ("W" nails and plates only):

32" Fir	N 22° W	29.9'
48" I Cedar	N 80° E	36.1'

14|13
23|24

Corner common to Sections 13, 14, 23 and 24

The 30" Cedar BT S 82° E 19 links in good condition. Short shells of burned out Cedars were found in the approximate position for the NE and NW Cedar BTs. A fire evidently destroyed the SW BT after it was knocked down by a large snag. ✓

Set a 2½" square Cedar post S 82° E 19 links from the identified 30" Cedar BT.

Referenced by Curtis Price (Weyerhaeuser Method):

28" Cedar	S 36° E	37.5'
32" Fir	N 65° E	40.4'
14" Fir	N 84° W	31.6'
24" Fir	S 22° W	57.5'

N 1/16 Corner for Sections 23 and 24 = Point "H"
 Set 2" square Cedar post by single proportionate method.
 Referenced by Curtis Price (Weyerhaeuser Method):

18" Fir	S 89° E	31.1'
18" Fir	N 24° E	36.3'

23|24 ✓ $\frac{1}{4}$ Corner common to Sections 23 and 24
 Found stake and Easterly Cedar BT. The West BT has
 apparently been destroyed.

$\frac{23}{26}$ | $\frac{24}{25}$ ✓ Corner common to Sections 23, 24, 25 and 26
 Found stake and intersecting blazed lines. William
 Semmler, Engineer for Youngs Bay Lumber Company said
 it has been accepted by the interested owners.

$\frac{24}{25}$ ✓ $\frac{1}{4}$ Corner common to Sections 24 and 25
 Found no trace of corner.
 Set a 2" square stake at mid-point approximately on
 line between corners and marked it "approximate $\frac{1}{4}$ S"
 with blue crayon.

$\frac{24}{25}$ | $\frac{19}{30}$ Corner common to Sections 19 and 30-26S-2W
 Sections 24 and 25-26S-3W
 Found a stone with 4 notches on the North and 2 notches
 on the South ends and 3 original BTs.
 Referenced by Curtis Price (Weyerhaeuser Method):

14" Fir	N 20° W	11.8'	(Original BT)
18" Fir	N 55° E	16.7'	(Original BT)
16" Fir	S 16° E	16.9'	(Original BT)
16" Fir	S 56° W	17.6'	

24 1/19

1/4 Corner common to Section 19-26S-2W
Section 24-26S-3W

Found a down, scribed, partially decayed post and both bearing trees.

Drove a 2" square stake.

Referenced by Curtis Price:

30" Fir	S 52° E	17.4'	(aluminum plate only):
20" Hemlock	S 24° W	7.2'	(aluminum plate and "W" nail only):

C 1/4

Corner for Section 24 = Point "K"

Set 3/4" pipe for center of Section at intersection of North-South and East-West centerlines.

Referenced by Curtis Price (aluminum plates and "W" nails only):

16" Hemlock	N 55° E	21.1'
50" Fir	N 61° W	14.5'
8" Hemlock	S 63° W	2.6'
14" Hemlock	S 66° E	6.5'

CN 1/16

Corner for Section 24 = Point "F"

Set stake for corner

Referenced by Curtis Price (Weyerhaeuser Method):

32" Fir	N 34° E	8.8'
48" Fir	N 66° W	26.1'

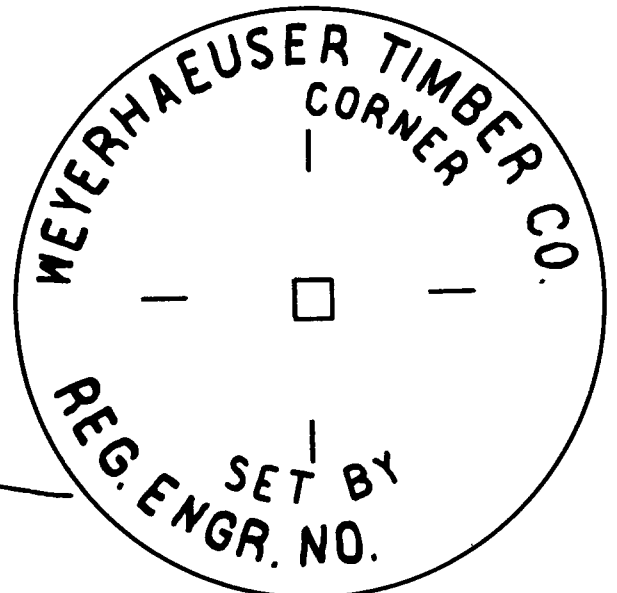
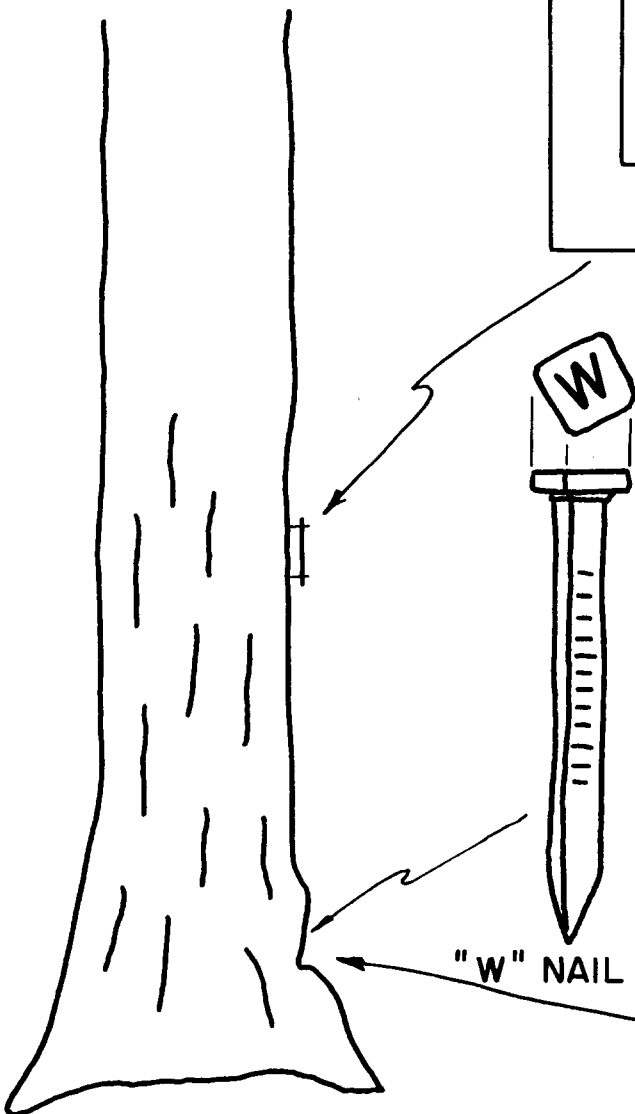
WEYERHAEUSER TIMBER COMPANY

CORNER REFERENCE

W. T. CO.			
SEC.	TWP.	R.	
FT.		TO	COR.

ALUMINUM PLATE

Scale : Actual Size



BRASS DISC