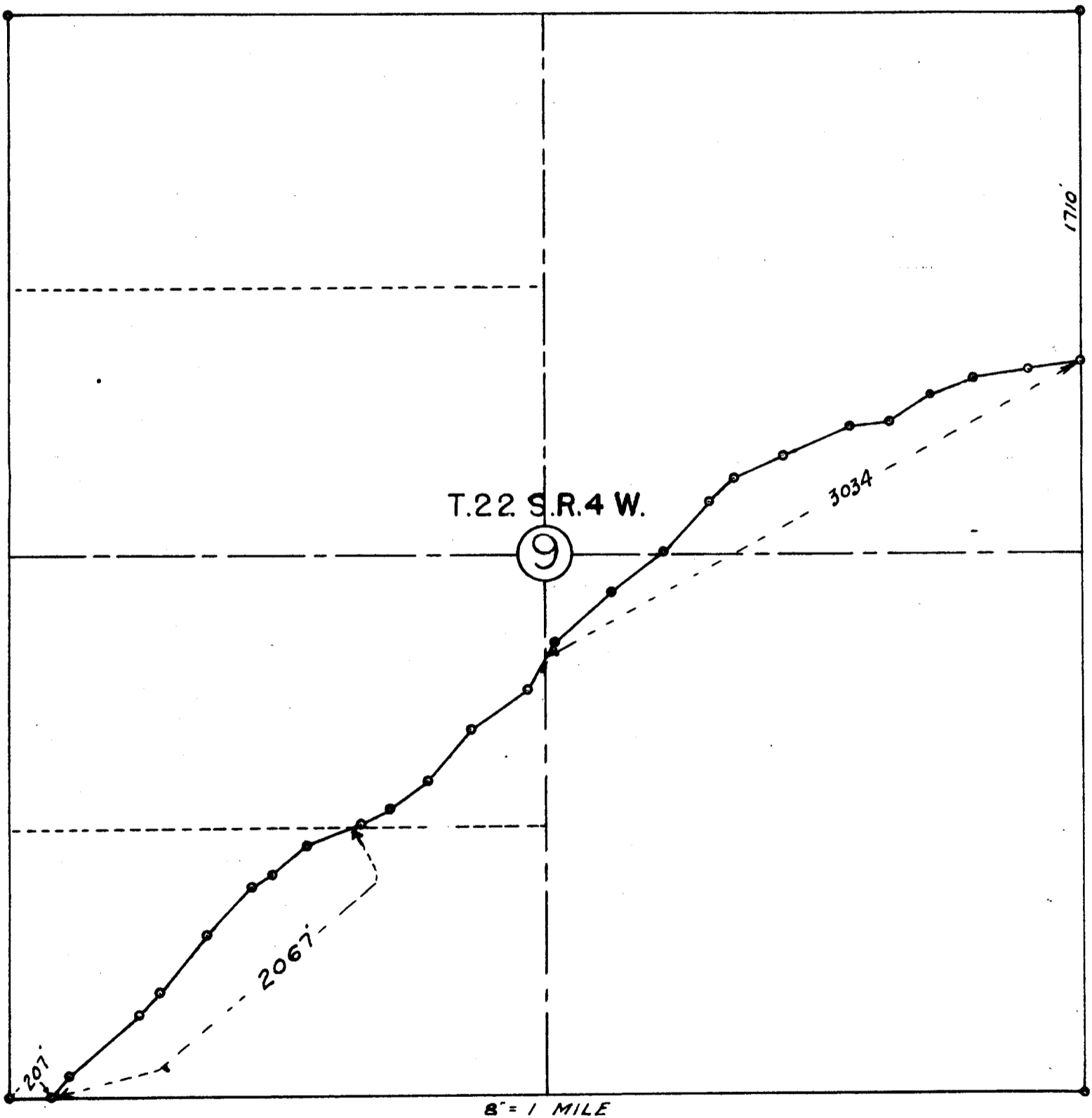


Beginning at a point which bears East 207 feet from the Southwest corner of Section 9, Township 22 South, Range 4 West, Douglas County, Oregon. Extending thence N 35°30'E 145 feet; N 51°30'E 450 feet; N 40°00'E 155 feet; N 41°45'E 370 feet; N 41°00'E 307 feet; N 61°00'E 130 feet; N 47°00'E 203 feet; N 60°45'E 307 feet; N 70°00'E 183 feet; N 46°40'E 207 feet; N 41°30'E 324 feet; N 55°00'E 342 feet; N 28°15'E 281 feet; N 5°30'E 355 feet; N 5°15'E 334 feet; N 41°15'E 326 feet; N 52°30'E 177 feet; N 61°00'E 250 feet; N 30°00'E 337 feet; N 03°15'E 200 feet; N 57°15'E 240 feet; N 68°45'E 229 feet; N 60°30'E 276 feet; N 81°45'E 103 feet; Terminating at a point on the East line of said Section 9 which bears South 1710 feet from the Northeast corner of said Section 9 having a total length of approximately 5101 feet.

Fred L. Dow, Civil Engineer
Sutherlin, Oregon.



MOUNTAINIDE LUMBER CO.

DRAIN, OREGON.

FEBRUARY 12th
1951

C. S. File No. 4137-1A

Mountainside Lumber Co.
Manufacturers of Finished Lumber

ROUTE 1
DRAIN, OREGON

Feb. 1, 1951.

Mr. Fred L. Dow

Dear Sir:

We have a established logging road that must be surveyed and mapped for the Bureau of Land Mangement. The road runs across Sect. 9 $\frac{1}{2}$ 22s R 4 W and is now being used for logging. Our mill is at Leona, also my pardner Virgil Russell lives at Leona. If you could let us know when you were coming, Virgil, who does the logging could show you the starting corner and get you lined out.

There is no big rush about the job but we would like to get it done as soon as possible so we could get cleared up with the Bureau. Would appreciate a reply from you.

Truly yours,

Kenneth W. Moore

Kenneth W. Moore.

CS FILE FOLDER

CONTAINS

MORE

INFORMATION