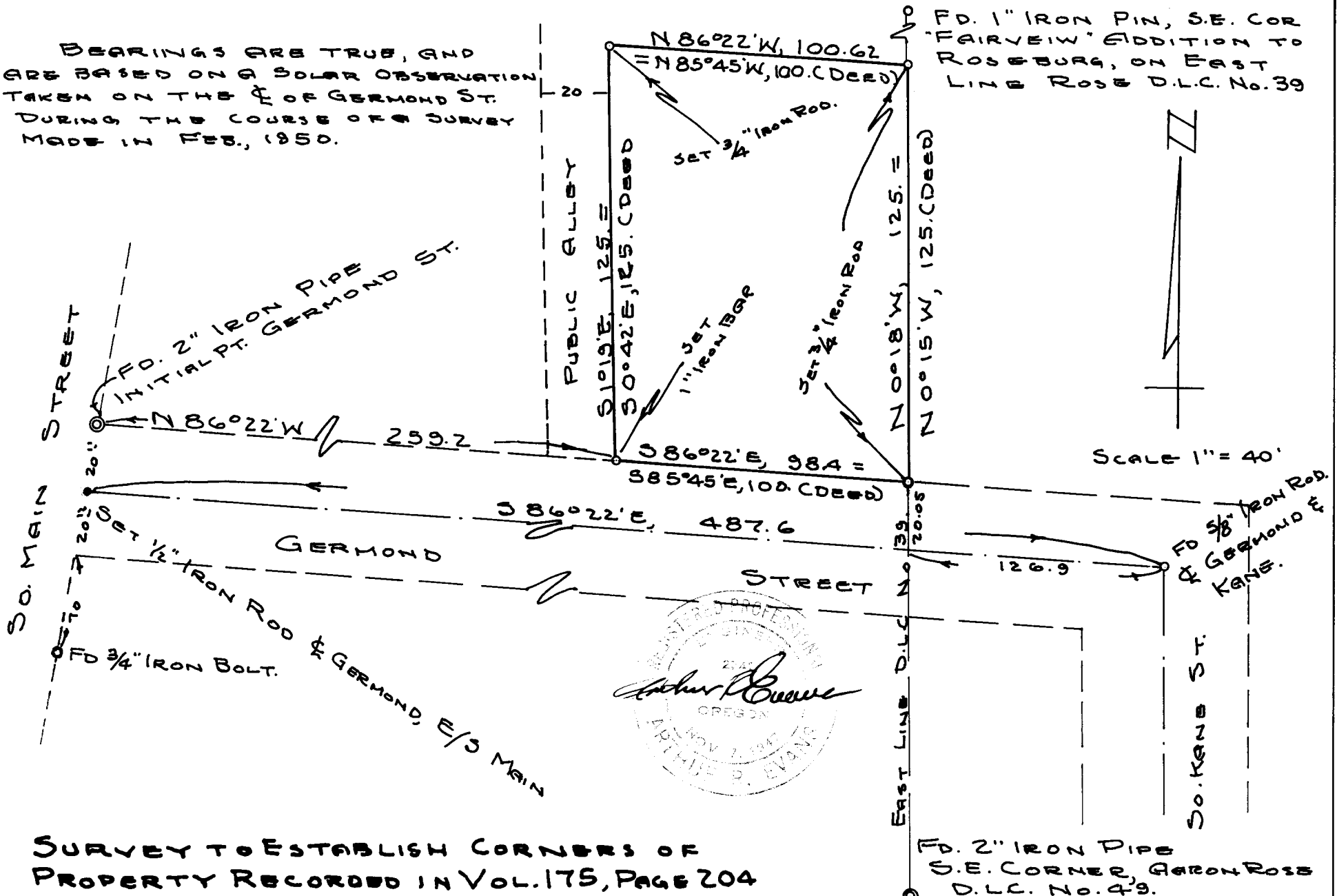


BEARINGS ARE TRUE, AND ARE BASED ON A SOLAR OBSERVATION TAKEN ON THE \odot OF GERMOND ST. DURING THE COURSE OF A SURVEY MADE IN FEB., 1950.



SURVEY TO ESTABLISH CORNERS OF PROPERTY RECORDED IN VOL. 175, PAGE 204 DEED RECORDS OF DOUGLAS CO. ORE.

GRANT AND EVANS, ENGINEERS,
ROSEBURG, OREGON
SURVEYED JAN. 1952 BY
A. P. EVANS, REG. PROF. ENGINEER

FILED

COUNTY SURVEYORS FILE DATA DO NOT REMOVE FROM OFFICE

COUNTY SURVEYOR

4/2/52