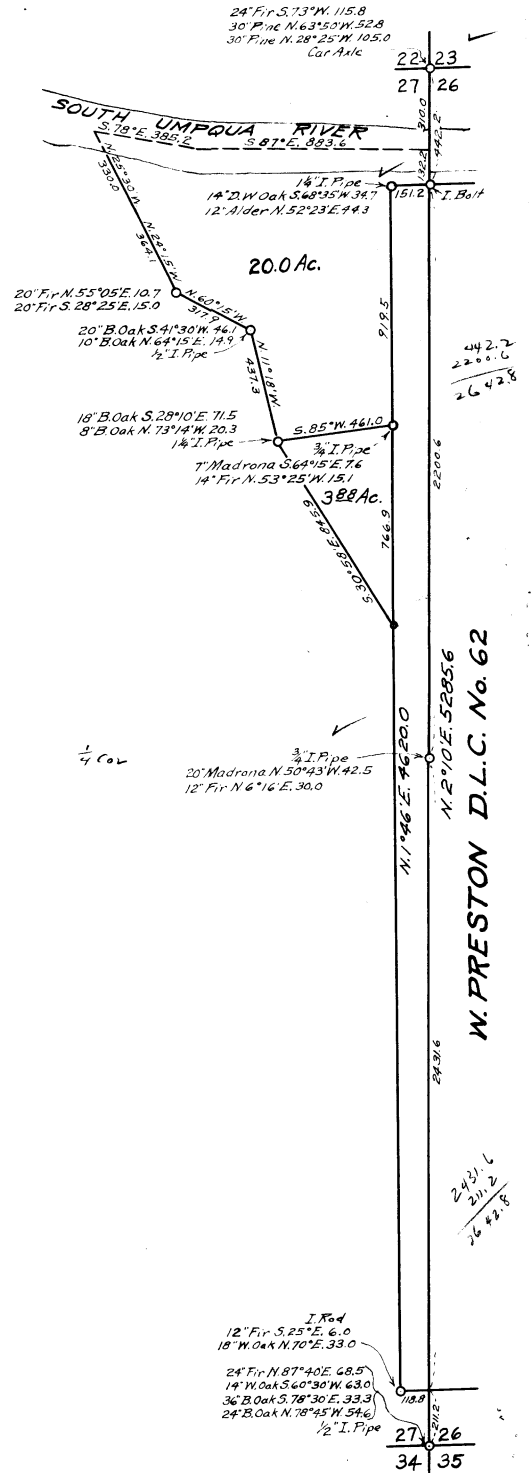


Geo. W. Woodruff

**COUNTY SURVEYOR'S OFFICE  
DOUGLAS COUNTY, OREGON.**

Surveys in  
**SECTION 27, T. 30 S., R. 5 W. W.M.**

Charles Leiser 1953  
1987



T. 30 S, R 5-W.

Sec. 26-27-34-35

Found 1/2" I. Pipe

18"	B. Oak	S. 73° 30' E.	26.4	Dead
14"	B. Oak	S. 14° W.	33.0	Dead
24"	B. Oak	N.	35.2	"
24"	Fir	N. 57° 40' E	68.5'	"

Recess	14"	W. Oak	S. 60° 30' W.	63.0'
	36"	B. "	S. 78° 30' E.	33.3'
	24"	B. "	N. 78° 45' W.	54.6'

entered

June 1951.

Chas. Leiser - Wil.

T 30 S - R - 5 W.

1/4 cor. bet. 26-27.

Place 1/2 way bet. Sec. corners 3/4" I. Pipe

20"	Madrona	N. 50° 43' W.	42.5'
12"	Fir	N. 6° 16' E.	30.0'

entered

June 1951.

Chas. Leiser - Wil.

T 32 S - R 5 W.

Cor Sec. 1-2-11-12.

Found Yew stake and 16" Fir N 61° W. 4.6'  
Drive 3/4" I. Pipe

Scribe	12"	Fir	N. 34° 15' W.	90.6'
	20"	"	S. 60° 15' W.	48.9'
	18"	"	N. 86° 07' E.	49.2'
	16"	"	S. 75° 22' E.	44.5'

entered

G.S.F. No. 4/18

August '51

F. Dean - Wil.

T 32 S, R 5 W.

46

Clearing 6-7-1-12

Fencing 3/4" I. Pipe

- 16" B. Water S. 30° E, 47.4
- 20" B. " N, 81° 40' E, 61.6 Marked 2880
- 24" B. " N, 50° W, 95.2

Intersect

Other trees blazed but not scribed.

August 1951

Notes copied from Geo. Wendervall  
note-book - Mar, 24- '52.

T 30 S, R. 5 W. Copied from Geo. Landwehr  
notes - 9/24/52

Cor. 22-23-26-27

Found 24" Fir S 73° W. 115.8'

30" Pine N. 63° 50' W. 52.8'

Drive car axle for corner.

Scribe 30" Pine N. 28° 25' W. 105'

entered

June 1951.

Chas. Leiser - Wilts.

T. 30 S, R - 5 - W.

N. W. Cor. R. L. Co. # 62 - Pres. Co.

442.2 ft. S. and 151.2 ft. W. of Cor. 22-23-26-27.

Drive 1 1/4" I. Pipe for corner.

14" Double W. Gate N. 68° 35' W. 34.7'

12" Alder N. 52° 23' E. 44.3'

entered

June - 1951.

Chas. Leiser - Wilts.

U.S. File No. 4118

T 32 S, R - 5 - W.

Copied from the  
wonderfully notes  
Mar. 24-52

3

1/4 cor. bet. sec. 12 - 13

Found holly B. I's.

50" Double Maple S 73° 15' W. 194.4'

36" Ash N. 56° W. 143.8'

Drive 3/4" I. Pipe for corner.

~~entered~~

Aug. 1951

Paul Newman - Wil.

T 32 S, R - 5 - W.

4

1/4 corner bet. sec. 1 + 12

Set halfway bet. sec. corners

3/4" I. Pipe for corner.

~~entered~~

24" Madrona N. 42° 10' E. 52.9'

24" Madrona S. 75° 40' E. 19.2'

August - 1951.

F. Klean - Wil.

T 32 S, R - 5 - W.

x 5

Cor. 26 - 27 - 34 - 35

Found - 40" Fir N. 10° E. 9.2' head

24" Pine S. 50° E. 17.6' stump

30" Fir S. 12° W. 44.8' "

24" Pine N. 40° W. 50.1' no marks

Drive 1 1/2" I. Pipe for corner.

Scribe 24" Fir S. 54° 30' W. 104.8'

28" Pine N. 42° W. 51.6'

~~entered~~

No other trees available.

May 1950.

U.S. File No. 41118

F. Loo - Wil.