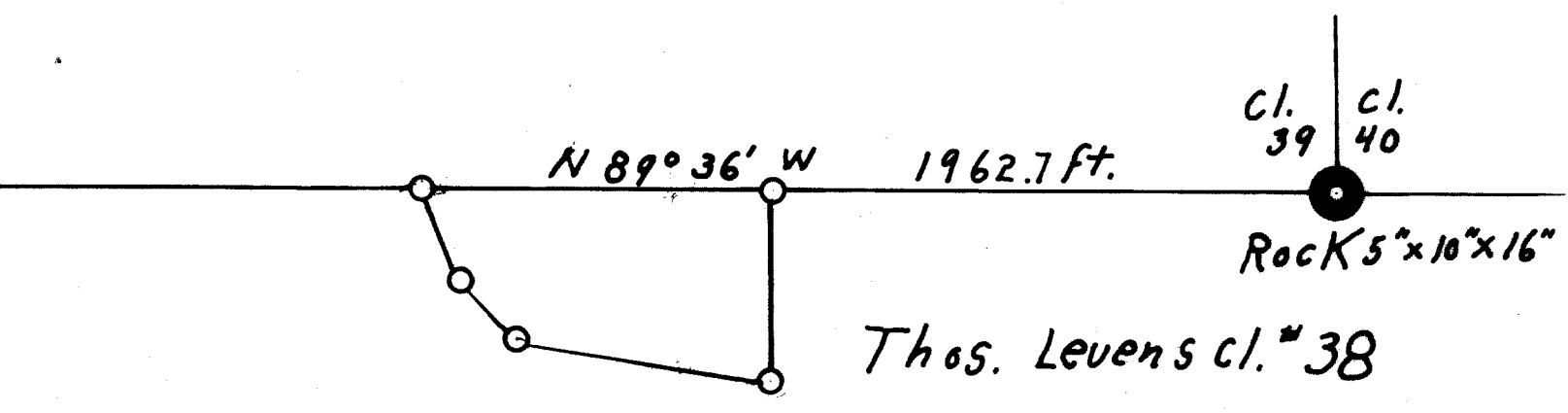


T. 22 S. - R. 7 W. Sect. 29. W. M.

Douglas County, Oregon.

1" = 400 ft.

Dec. 28, 1951



Thos. Levens cl. # 38

Beginning At A fence cor. on East side of State Highway # 225 on line between claim 38+39, 1962.7 ft. N 89° 36' W. of Cor. cls. 39+40. Thence S 22° 03' E 219.8 ft. Thence S. 41° 59' E 172.8 ft. Along East side of said Highway to a 3/4 in. pipe Thence S 81° 07' E 560.2 ft. To a 3/4 in. pipe, thence North 418.7 ft. to a 3/4 in. pipe on line between cls. 38+39, Thence N. 89° 36' W. 746.6 ft. Along line between cls. 38+39 to a 3/4 in pipe, Thence continue along line N. 89° 36' W. 5.0 ft. To place of beginning. Enclosing A parcel of land containing 6 Acres more or less. All in Section 29, T. 22 S., R 7 W. Will. Mer. in Douglas County, Oregon.

FILED RECEIVED

MAR 24 1952

COUNTY SURVEYOR DOUGLAS COUNTY, ORE.

REGISTERED OREGON LAND SURVEYOR

Wilford N. Haines

MAY 7, 1948 WILFORD N. HAINES 239

COUNTY SURVEYORS FILE DATA DO NOT REMOVE FROM OFFICE