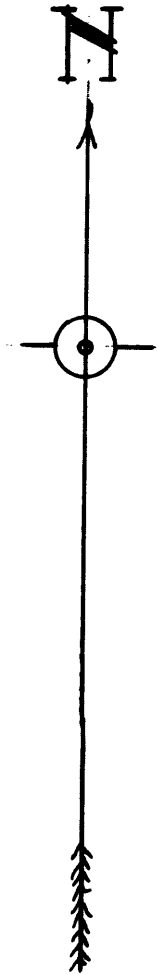


SOUTH UMPQUA RIVER
176°27'30" N
239.0'

1/2" x 30" Iron Rod
High Bank
3/4" x 24" I.P.

857.3'
570.47' N
5.127 ACRES.
N 9°39'30" E
857.25'



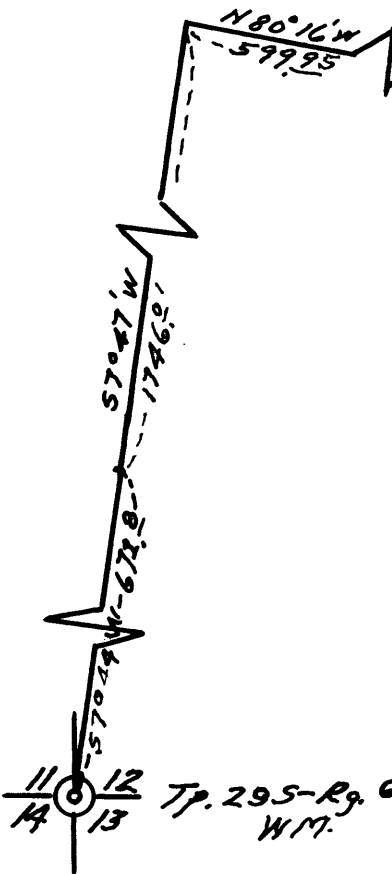
3/4" x 30" I.P.
205.4'
580.16' E
1" x 36" I.P.
HWY. #99

MAP OF
OF
PORTION OF HELGESON RANCH
IN

SEC. 12 Tp. 29S-Rg. 6W W.M.

Scale - 1" = 200' Jan. 1960.

COUNTY SURVEYOR OF WASH
IN THE PRESENCE OF JOHN



CS FILE FOLDER

CONTAINS

MORE

INFORMATION