

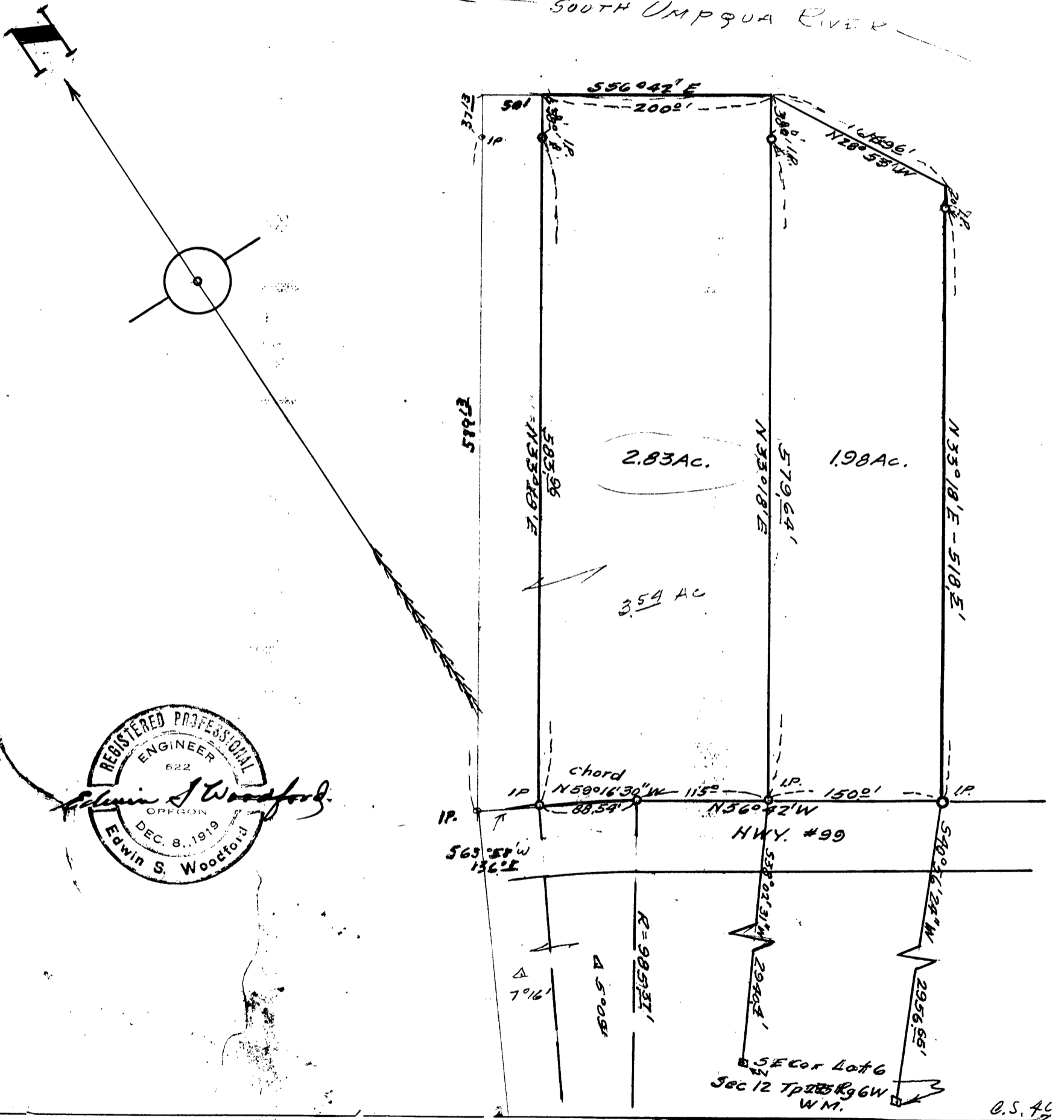
COUNTY SURVEYORS FILE DATA
DO NOT REMOVE FROM OFFICE

MAP
OF
PORTION OF HELGESEN RANCH
SEC. 12 - Tp. 29S - R. 9W W.M.
Scale - 1" = 100' June 1951.

FILED
RECEIVED

JUN 12 1951

COUNTY SURVEYOR
DOUGLAS COUNTY, ORE



CS FILE FOLDER

CONTAINS

MORE

INFORMATION